



## VI. Identify the photograph / picture 'G' and write its economic importance

### 1. KANGAYAM BULL

#### Identification:

The photograph kept for identification is Kangayam bull.

#### Economic importance:

1. It is originated from the place called Kangayam in Tamilnadu.
2. This breed is meant for pulling carts, ploughing fields etc.
3. This breed is exclusively used in the traditional game called Jallikattu (manju virattu) in Tamilnadu.
4. It is a best example for a draught breed.



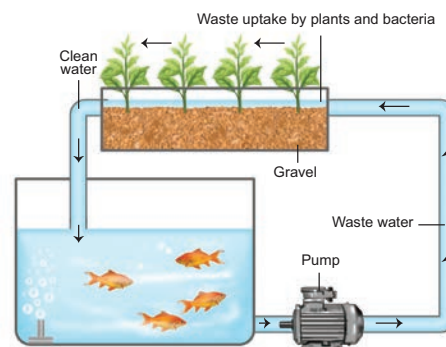
## 2. AQUAPONICS

### Identification:

The photograph kept for identification is Aquaponics.

### Economic importance:

1. Aquaponics is a technique which is a combination of Aquaculture and Hydroponics.
2. It maintains balanced ecosystem by recycling the waste and excretory products produced by the fish.
3. Cultivable fishes like Tilapia, Gold fish, Kuduva etc. are cultured in aquaponics.
4. Plants like tomato, pepper and cucumber can be cultivated in this method.

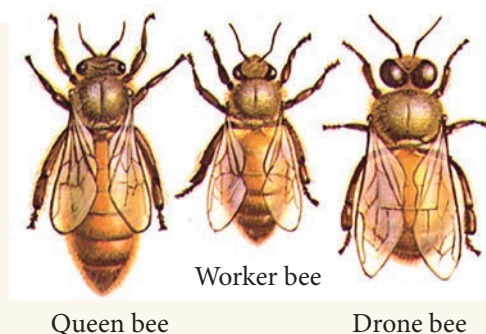


## 3. HONEY BEE

**Identification:** The photograph kept for identification is Honey bee.

### Economic importance:

1. The chief products of bee keeping industry are honey and bee wax.
2. Honey is the healthier substitute for sugar.
3. It is used as an antiseptic, laxative and as a sedative.
4. Bee wax secreted by the abdomen of the worker bee is used for making candles, polishes for floors and furniture etc.



## 4. BOMBYX MORI

### Identification:

The photograph kept for identification is silkworm *Bombyx mori*

### Economic importance:

1. Silk fibre produced by this silkworm is called mulberry silk.
2. It mainly feeds on mulberry leaves
3. It is used in manufacturing silk cloths, fishing fibres, tyres of racing cars, in medical dressings, parachutes etc.

