

**Chapter - 1**  
**Food: Where does it come from?**

**Multiple Choice Questions:**

**1. Given below are names of some animals.**

- (i) Goat**
- (ii) Human beings**
- (iii) Cockroach**
- (iv) Eagle**

**which of the above animals form a pair of omnivores?**

- (a) (i) and (ii)**
- (b) (ii) and (iii)**
- (c) (iii) and (iv)**
- (d) (ii) and (iv)**

**Solution:**

(b) Human beings and Cockroach.

Humans and cockroaches eat both animals and plants so, they are omnivores. Goats eat only plants and plant products so they are herbivores. Eagles eat flesh of other animals so, they are carnivores.

**2. Honeybee makes honey from**

- (a) pollen**
- (b) petals**
- (c) nectar**
- (d) bud.**

**Solution:**

(c): nectar.

Honeybees collect nectar from flowers and take it to their beehive. Honeybees convert it into honey and store it as food. Hence we get honey from beehives.

**3. Below are names of some animals.**

- (i) Cow**
- (ii) Sheep**
- (iii) Horse**
- (iv) Ox**

**which of the above are sources of milk for human beings?**

- (a) (i) and (iii)**
- (b) (i) and (ii)**
- (c) (ii) and (iii)**
- (d) (iii) and (iv)**

**Solution:**

(b): Cow and Sheep.

Cow and sheep are dairy animals i.e., they are kept for obtaining milk. They are also called milch animals.

Ox and horse are draught animals i.e., they are used for transportation and in agriculture.

**4. Given below is a list of edible plants.**

**(i) Banana**

**(ii) Pumpkin**

**(iii) Lady's finger**

**(iv) Brinjal**

**Which pair of plants have two or more edible parts?**

**(a) (i) and (ii)**

**(b) (ii) and (iii)**

**(c) (iii) and (iv)**

**(d) (i) and (iv)**

**Solution:**

(a): Banana and Pumpkin.

In banana: stem, fruit and flower are edible and in pumpkin: flower and fruit are edible.

In lady's finger and brinjal: only the fruit is edible.

**5. The part of a banana plant not used as food is**

**(a) flower**

**(b) fruit**

**(c) stem**

**(d) root.**

**Solution:**

(d): root.

In banana: stem, fruit and flower are edible which are very useful.

**6. Read each set of terms and identify the odd set.**

**(a) Cow, milk, butter**

**(b) Hen, meat, egg**

**(c) Goat, milk, meat**

**(d) Plant, vegetable, butter milk**

**Solution:**

(d): Plant, vegetable, butter milk

Vegetables are part of the plants whereas butter milk is an animal product.

**Very Short Answer Questions:**

**7. Read the clues and fill up the blanks given below each of them.**

**(a) Honeybees suck from flower.**

**N \_ \_ T \_ R**

**(b) Animals which eat other animals.**

**\_ A \_ N \_ V \_ R \_ S**

**(c) Animals which eat only plants and plant products.**

**H E \_ B \_ \_ \_ \_ E \_**

**(d) Animals which eat both plants and animals.**

**\_ M N I \_ O \_ \_ \_**

**Solution:**

**(a) NECTAR**

**(b) CARNIVORES**

**(c) HERBIVORES**

**(d) OMNIVORES**

**8. Why do boiled seeds fail to sprout?**

**Solution:**

Boiled seeds fail to sprout because boiling kills the seed.

**9. Where do bees store honey?**

**Solution:**

Bees store honey in their beehives.

**10. Name two ingredients in our food that are not obtained from plants or animals.**

**Mention one source for each ingredient.**

**Solution:**

Two ingredients in our food that are not obtained from plants or animals are salt and water.

Main source of salt is obtained from sea water and from rock.

Water is obtained from river, well, tube well, rain etc.

**11. Given below are jumbled words which are names of parts of a plant. Rearrange them to get the correct words.**

**(a) LILCHI**

**(b) ITRUF**

**(c) SEANBOYA**

(d) **GURSA**

(e) **ROUNDGUNT**

**Solution:**

The rearranged words are:

(a) CHILLI

(b) FRUIT

(c) SOYABEAN

(d) SUGAR

(e) GROUNDNUT

**Short Answer Questions:**

**12. Identify the animals in the grid given below as Fig. 1.1 and categorize them into herbivore, carnivore and omnivore.**

T	A	C	O	W	O	L	F
T	A	R	W	X	G	O	R
N	N	O	L	I	O	N	O
E	T	W	Q	L	A	N	G
H	U	M	A	N	T	W	O

**Fig 1.1**

**Solution:**

T	A	C	O	W	O	L	F
T	A	R	W	X	G	O	R
N	N	O	L	I	O	N	O
E	T	W	Q	L	A	N	G
H	U	M	A	N	T	W	O

Herbivore – Cow, Goat, Hen

Carnivore – Wolf, Lion, Frog

Omnivore – Cat, Rat, Crow, Human, Ant, Owl

**13. Why should we avoid wastage of food?**

**Solution:**

We should avoid wastage of food because:

- (i) Sufficient food is not available for everyone.
- (ii) Food is very costly and poor people cannot afford to buy even the minimum required amount of food.

**14. Why do organisms need food? Write two reasons.**

**Solution:**

Organisms need food because

- (i) Without energy we cannot do any activity hence food give energy to do the work.
- (ii) Food helps in building the body parts stronger.
- (iii) Food contains minerals, which helps in protecting the body against diseases.

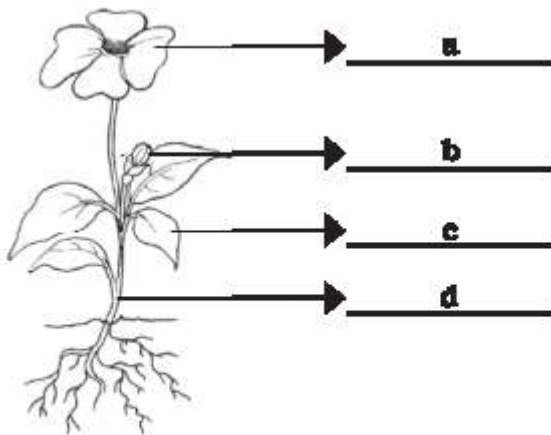
**15. Match the organisms given in column I with their part product in column II that is used by human beings as food.**

Column I	Column II
(a) Mustard plant	(i) Meat
(b) Goat	(ii) Fruits and vegetables
(c) Hen	(iii) Seed
(d) Smoke	(iv) Direction of air flow
(e) Wind	(v) Prevent dust particles

**Solution:**

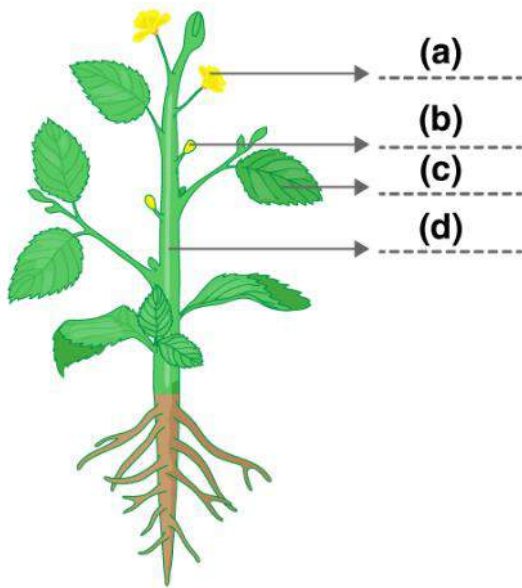
Incorrect question.

**16. Label and colour the different parts of the plant given below in Fig. 1.2.**



**Fig. 1.2**

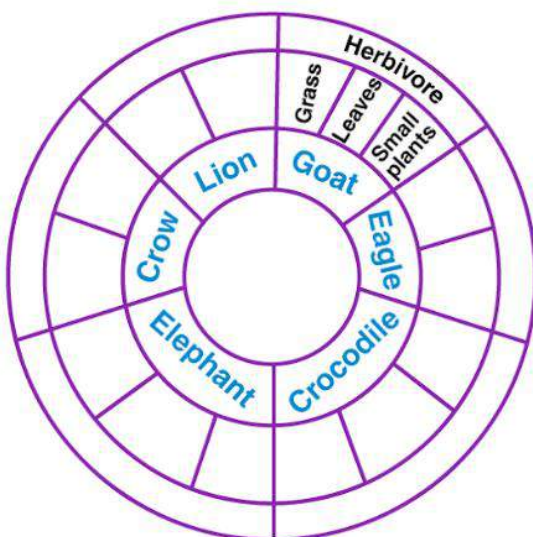
**Solution:**



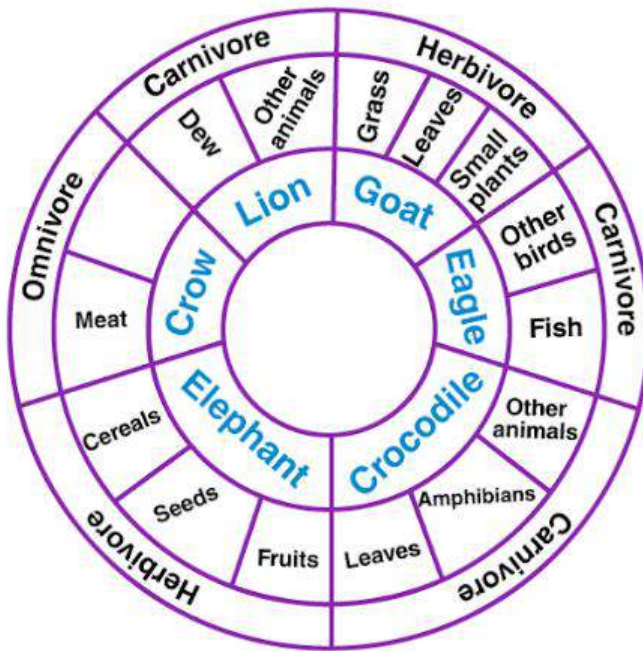
- (a) Flower
- (b) Floral bud
- (c) Leaf
- (d) Stem

### Long Answer Questions:

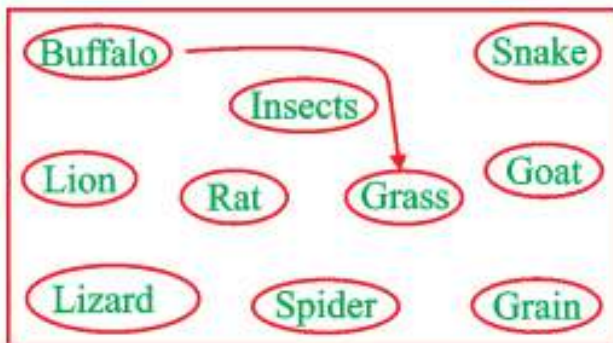
17. Read the names of animals written in the inner ring of Fig. 1.3. Within the second ring write the types of food they eat and the category to which they belong (based on the eating habit) in the outermost ring. One example has been worked out for you. Use red, green and blue colours for writing.



**Solution:**

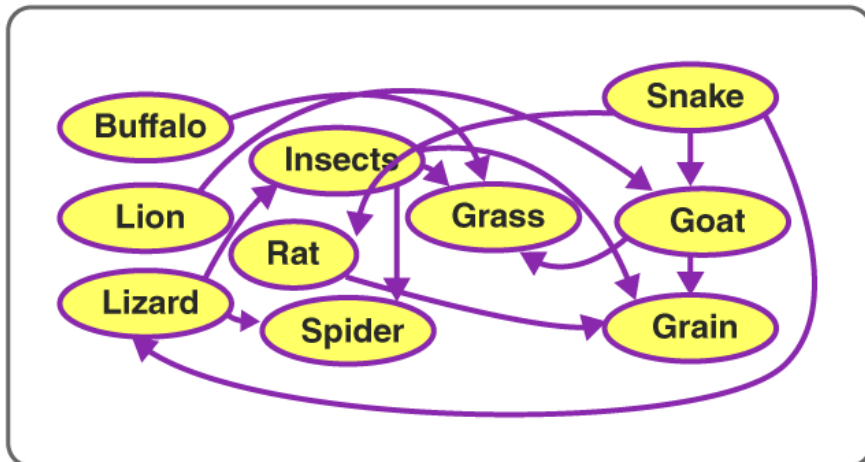


18. Connect the animal with the food it eats by an arrow using different colours in Fig. 1.4. One is done for you.



**Fig. 1.4**

**Solution:**



Buffalo – Grass

Lion – Goat

Lizard – Insects, Spider

Rat – Grain

Insect – Grain, Grass

Spider – Insects

Snake – Rat, Lizard, Goat

Goat – Grass, Grain

**19. List two of your favorite food items and mention their ingredients.**

**Solution:**

Food Items	Ingredients
1. Dal curry	Dal, onions, tomatoes, oil, water, salt, spices.
2. Kheer	Rava, ghee, sugar, dry fruits.