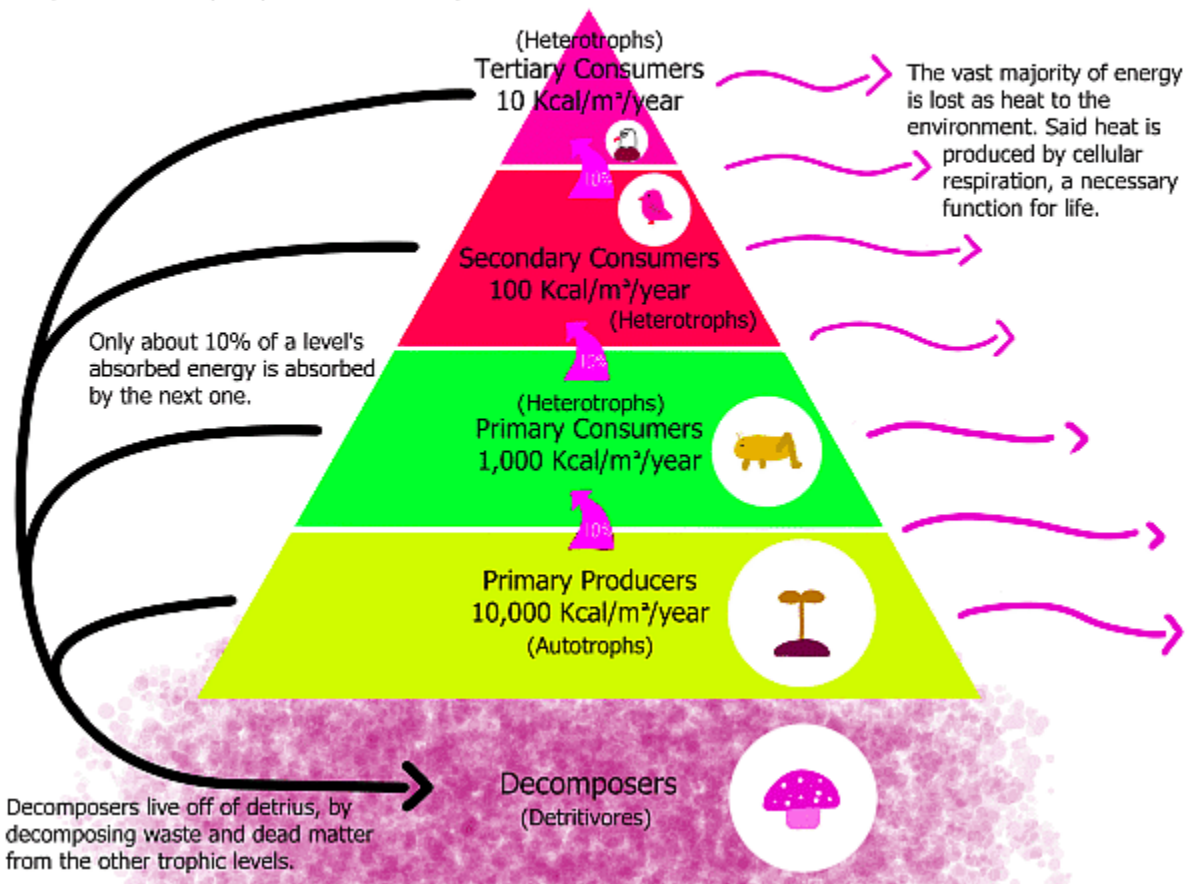


Ecosystem

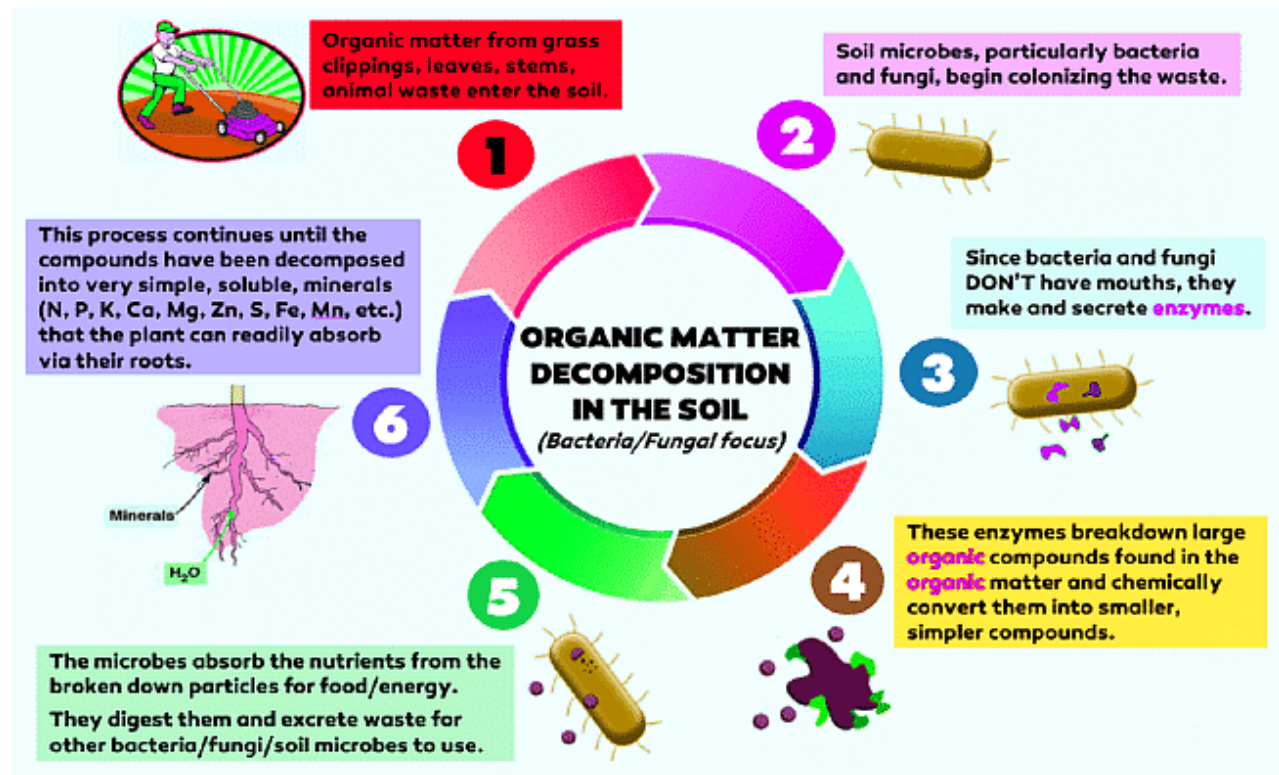
Trophic Level & Energy Transfer

Trophic Levels & Energy Transfer

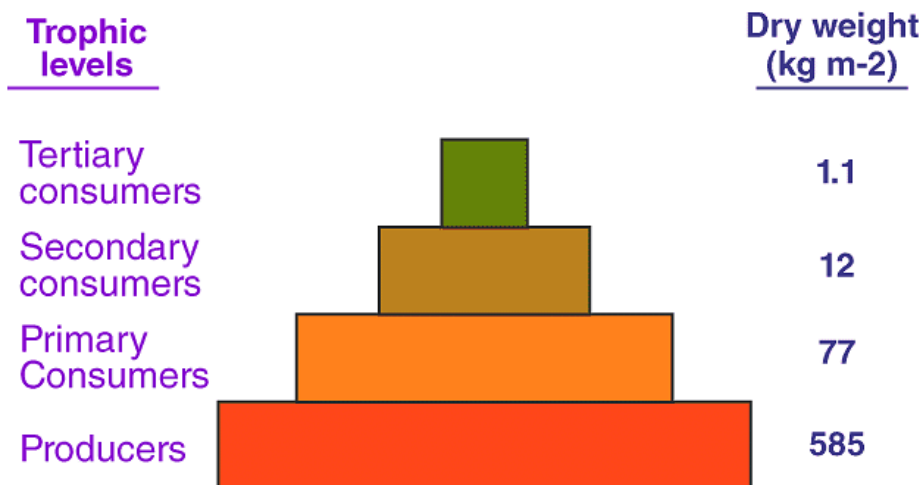
Trophic levels are split by a who-eats-who system.



Decomposition cycle in a terrestrial ecosystem

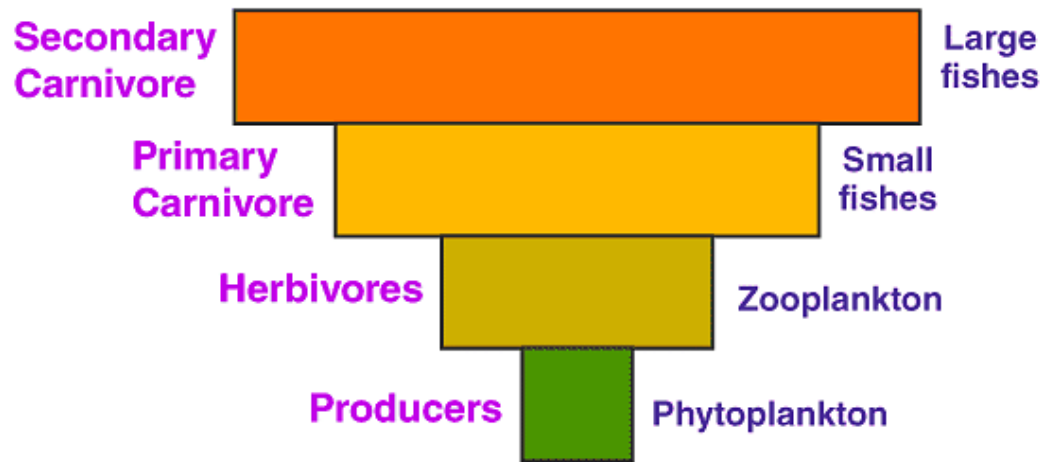


Biomass Pyramid of a Grassland Ecosystem



Pyramid of biomass for grassland ecosystem

Biomass Pyramid of a Marine Ecosystem



Inverted pyramid of biomass for marine ecosystem