



Plant Breeding



Learning Objectives

The learner will be able to

- ❖ Appreciate the relationship between humans and plants.
- ❖ Recognise the origin of agriculture.
- ❖ Perceive the importance of organic agriculture.
- ❖ Understand the different conventional methods of plant breeding.



Chapter outline

9.1 Relationship between human and plants

9.2 Domestication of plants

9.3 Origin of agriculture

9.4 Organic agriculture

9.5 Plant breeding

9.6 Conventional plant breeding methods

9.7 Modern plant breeding Techniques



Economic botany is the study of the relationship between people and economically important plants. It explores the ways by which humans use plants for food, medicines and other uses. Economic botany intersects many fields including established disciplines such as agronomy, anthropology, archaeology, chemistry, trade and commerce.

9.1 Relationship between humans and plants

From the very early times, human beings have co-existed with plants which played a vital role in their survival. Through a long process of trial and error, our ancestors have selected hundreds of wild plants from the various parts of the world for their specific use. The knowledge of the plants and its applications have led to the development of the humans and their civilization in many ways.

9.2 Domestication of plants

Domestication is the process of bringing a plant species under the control of humans and gradually changing it through careful selection, genetic alteration and handling so that it is more useful to people. The domesticated species are renewable sources that have provided food and other benefits to human.

The possible changes in the plant species due to domestication are listed below;

- Adaptation to a greater diversity of environments and a wider geographical range.
- Simultaneous /uniform flowering and fruiting.
- Lack of shattering or scattering of seeds.

- Increased size of fruits and seeds.
- Change from a perennial to annual habit.
- Change in breeding system.
- Increased yield.
- Increased resistance for disease and pest.
- Developing seedless parthenocarpic fruit.
- Enhancing colour, appearance, palatability and nutritional composition.

9.3 Origin of Agriculture

Archeological evidence for earliest record of agriculture is found in the fertile crescent region in and around Tigris and Euphrates river valleys, approximately about 12,000 years ago.

The earlier Greek and Roman naturalists like Theophrastus, Dioscorides, Pliny the elder and Galen laid down the scientific foundation in understanding origin and domestication of cultivated plants.

9.4 Organic Agriculture

Organic farming is an alternative agricultural system which originated early in the twentieth century in reaction to rapidly changing farming practices. It is a production system that sustains the health of the soils, ecosystems and people. It relies on ecological processes, biodiversity and cycles adapted to local conditions rather than the use of inputs with adverse effects.

9.4.1. Biofertilizers

Biofertilizers are defined as preparations containing living cells or latent cells of efficient strains of microorganisms that help crop plants uptake of nutrients by their interactions in the rhizosphere when applied through seed or soil. Biofertilizers could be also called as microbial cultures, bioinoculants, bacterial inoculants or bacterial fertilizers.

They are efficient in fixing nitrogen, solubilising phosphate and decomposing cellulose. They are designed to improve the soil fertility, plant growth, and also the number and biological activity of beneficial microorganisms in the soil. They are eco-friendly organic agro inputs and are more



Indian Plant Breeders

- Dr. M. S. Swaminathan** – He is a pioneer mutation breeder.
- Sir. T.S. Venkataraman** – An eminent sugarcane breeder.
- Dr. B.P. Pal** – Famous wheat breeder, developed superior disease resistant varieties of wheat.
- Dr. K. Ramiah** – Eminent rice breeder, developed several high yielding varieties of rice.
- N.G.P. Rao** – An eminent sorghum breeder, developed world's first hybrid of Sorghum (CSH-1).
- C.T. Patel** – Who developed world's first cotton hybrid.
- Choudhary Ram Dhan** – Wheat breeder, who is famous for C-591 variety of wheat, which made Punjab the wheat granary of India.

efficient and cost effective than chemical fertilizers.

S.N	Groups	Examples
A	N₂ fixing Biofertilize	
	1. Free-living	<i>Azotobacter, Clostridium, Anabaena, Nostoc,</i>
	Symbiotic	<i>Rhizobium, Anabaena azollae</i>
	3. Associative Symbiotic	<i>Azospirillum</i>
B	P Solubilizing Biofertilizer	
	1. Bacteria	<i>Bacillus subtilis, Pseudomonas striata</i>
	2. Fungi	<i>Penicillium, Aspergillus.</i>
C	P Mobilizing Biofertilizers	
	1. Arbuscular Mycorrhiza	<i>Glomus, Scutellospora.</i>
	2. Ectomycorrhiza	<i>Amanita.</i>
D	Biofertilizer for Micro nutrients	
	1. Silicate and Zinc solubilizers	<i>Bacillus.</i>
E	Plant Growth Promoting Rhizobacteria	
	2. Pseudomonas	<i>Pseudomonas fluorescence</i>

Figure 9.1: Classification of Biofertilizers

Rhizobium

Bio-fertilisers containing rhizobium bacteria are called *rhizobium* bio-fertilizer culture. Symbiotic bacteria that reside inside the root nodules convert the atmospheric nitrogen into a bio available form to the plants. This nitrogen fixing bacterium when applied to the soil undergoes multiplication and fixes the atmospheric nitrogen in the soil. *Rhizobium* is best suited for the paddy fields which increase the yield by 15 – 40%.

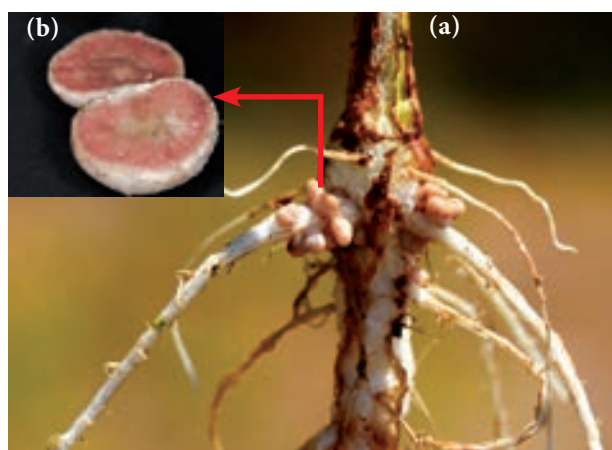


Figure 9.2 (a) : Root nodules occur on root
(b) C.S. of Root nodule

Azolla

Azolla is a free-floating water fern that fixes the atmospheric nitrogen in association with nitrogen fixing blue green alga *Anabaena azolla*. It is used as a bio-fertilizer for wetland rice cultivation and is known to contribute 40 – 60 kg/ha/crop. The agronomic potential of *Azolla* is quite significant particularly for increasing the yield of rice crop, as it quickly decompose in soil.



Figure 9.3: (a) *Azolla* in paddy field
(b) *Azolla*

Arbuscular mycorrhizae

Arbuscular mycorrhizae (AM) is formed by the symbiotic association between certain

phycomycetous fungi and angiosperm roots. They have the ability to dissolve the phosphates found in abundance in the soil.

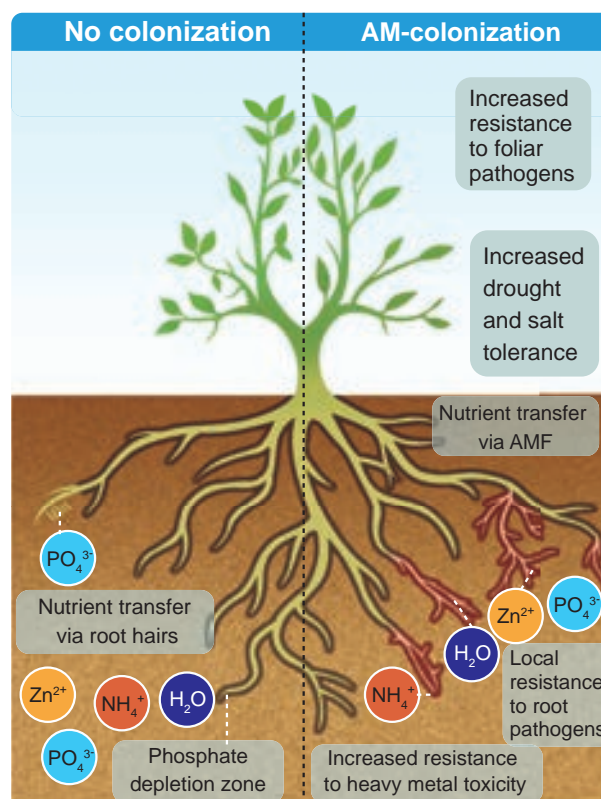


Figure 9.4 Benefits of AM colonisation

Apart from increasing the availability of phosphorus, AM provides necessary strength to resist disease, germs and unfavourable weather conditions. It also assures water availability.

Seaweed Liquid Fertilizer

Seaweed liquid fertilizer (SLF) contains cytokinin, gibberellins and auxin apart from macro and micro nutrients. Most seaweed based fertilizers are made from kelp(brown algae) which grows to length of 150 metres. seaweed



Figure 9.5 : Seaweed – Kelp

Liquid fertilizer is not only organic but also eco-friendly. The alginates in the seaweed that react with metals in the soil and

form long, cross-linked polymers in the soil. These polymers improve the crumbing in the soil, swell up when they get wet and retain moisture for a long time. They are especially

useful in organic gardening which provides carbohydrates for plants. Seaweed has more than 70 minerals, vitamins and enzymes. It promotes vigorous growth. Improves resistance of plants to frost and disease. Seeds soaked in seaweed extract germinate much rapidly and develop a better root system.

Bio-Pesticides

Bio-pesticides are biological agents used for the control of plant pests. They are in high use due to their non-toxic, cheaper and eco-friendly characteristics as compared to chemical or synthetic pesticides. Bio-pesticides have become an integral component of pest management in terms of the environmental and health issues attributed to the use of chemicals in agriculture.

Trichoderma species are free-living fungi that are common in soil and root ecosystem. They have been recognized as bio-control agent for (1) the control of plant disease (2) ability to enhance root growth development (3) crop productivity (4) resistance to abiotic stress and (5) uptake and use of nutrients.



Figure 9.6:
(a) *Trichoderma* fungi



Figure 9.6:
(b) Biopesticide

Beauveria species is an entomo-pathogenic fungus that grows naturally in soils throughout the world. It acts as a parasite on various arthropod species causing white muscardine disease without affecting the plant health and growth. It also controls damping off of tomato caused by *Rhizoctonia solani*.

Green Manuring

Green manuring is defined as the growing of green manure crops and use of these crops directly in the field by ploughing. One of the

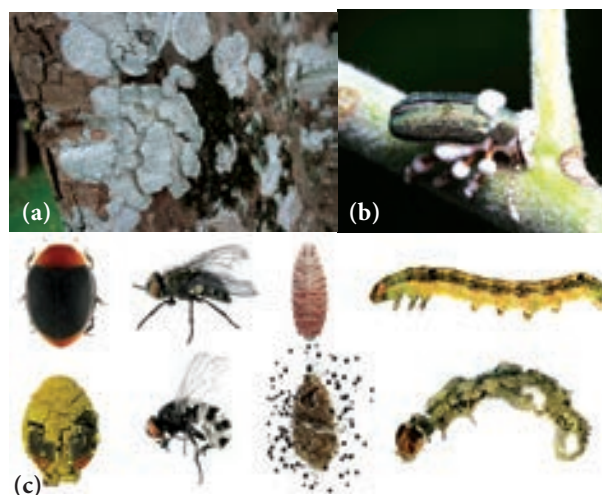


Figure 9.7: (a) *Beauveria* Fungi
(b) *Beauveria* sps infected insect on green plant
(c) Entomopathogenic fungi on insets

main objectives of the green manuring is to increase the content of nitrogen in the soil. Also it helps in improving the structure and physical properties of the soil. The most important green manure crops are *Crotalaria juncea*, *Tephrosia purpurea*, *Indigofera tinctoria*

The green manuring can be practised as Green in-situ manuring or Green leaf manuring. Green in-situ manuring refers to the growing of green manuring crops in the border rows or as intercrops along with the main crops. Example: Sun hemp, Cowpea, Green gram etc. whereas green leaf manuring is the application of green leaves and twigs of trees, shrubs, plants growing in wastelands and field bunds. The important plant species useful for green leaf manure are *Cassia fistula*, *Sesbania grandiflora*, *Azadirachta indica*, *Delonix regia*, *Pongamia pinnata* etc.,

9.5 Plant Breeding

Plant breeding is the science of improvement of crop varieties with higher yield, better quality, resistance to diseases and shorter durations which are suitable to particular environment. In other words, it is a purposeful manipulation of plant species in order to create desired genotype and phenotype for the benefit of humans. In early days, plant breeding activities were based mainly on skills and ability of person involved. But as

the principles of genetics and cytogenetics have elucidated breeding methods such as selection, introduction, hybridization, ploidy, mutation, tissue culture and biotechnology techniques were designed to develop improved crop varieties.

9.5.1. Objectives of Plant Breeding

- To increase yield, vigour and fertility of the crop
- To increase tolerance to environmental condition, salinity, temperature and drought.
- To prevent the premature falling of buds, fruits etc.
- To improve synchronous maturity.
- To develop resistance to pathogens and pests.
- To develop photosensitive and thermos-sensitive varieties.



9.5.2. Steps in Plant Breeding

The main steps in plant breeding are given below

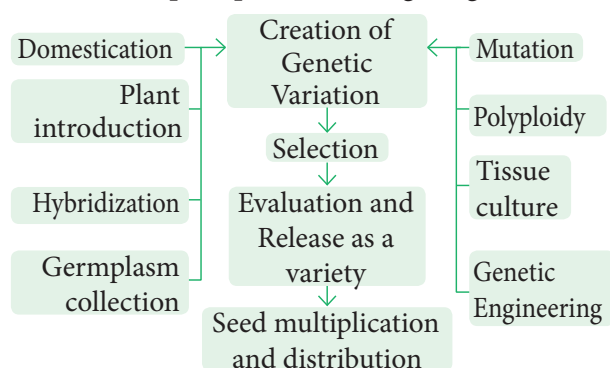


Figure 9.8: Steps in Plant Breeding

9.6 Conventional Plant Breeding Methods

Conventional plant breeding methods resulting in hybrid varieties had a tremendous impact on agricultural productivity over the last decades. It develops new plant varieties by the process of selection and seeks to achieve expression of genetic material which is already present within the species. In this chapter we will discuss about some of the conventional methods of plant breeding.

9.6.1. Plant Introduction

Plant introduction may be defined as the introduction of genotypes from a place where it is normally grown to a new place or environment. Rice variety of IR8 introduced from Philippines and Wheat varieties of Sonora 63, Sonora 64 from Mexico.

The newly introduced plant has to adapt itself to the new environment. This adjustment or adaptation of the introduced plant in the changed environment is called **acclimatization**. All the introductions must be free from presence of weeds, insects and disease causing organisms. This has to be carefully examined by the process called **quarantine**, a strict isolation imposed to prevent the spread of disease.

Introduction may be classified as Primary introduction and Secondary introduction

(1) **Primary introduction** - When the introduced variety is well adapted to the new environment without any alternation to the original genotype.

(2) **Secondary introduction** - When the introduced variety is subjected to selection to isolate a superior variety and hybridized with a local variety to transfer one or a few characters to them. The botanical gardens in different parts of the world also played a significant role in plant introduction. Example : Tea varieties collected from China and North East India initially grown in Botanical Garden of Kolkata from which appropriate clones have selected and introduced to different parts of India.



National Bureau of plant Genetic Resources (NBPGR)
The Bureau is responsible for introduction and maintenance of germ plasm of various agricultural and horticultural station in our country. It is also responsible for maintenance of plant materials of botanical and medicinal interest. It is located at Rangpuri, New Delhi and has four regional plant quarantine stations at Amritsar, Kolkata, Mumbai and Chennai at Meenambakkam

9.6.2. Selection

Selection is the choice of certain individuals from a mixed population for a one or more desirable traits. Selection is the oldest and basic method of plant breeding. There are two main types of Selection.

i. Natural Selection: This is a rule in nature and results in evolution reflected in the Darwinian principle “survival of the fittest”. It takes longer time in bringing about desired variation.

ii. Artificial Selection: It is a human involved process in having better crop from a mixed population where the individuals differ in character. The following are the three main types of artificial selection.

a. Mass Selection: In mass selection a large number of plants of similar phenotype or morphological characters are selected and their seeds are mixed together to constitute a new variety. The population obtained from the selected plants would be more uniform than the original population and are not individually tested. After repeated selection for about five to six years, selected seeds are multiplied and distributed to the farmers. The only disadvantage of mass selection is that it is difficult to distinguish the hereditary variation from environmental variation.

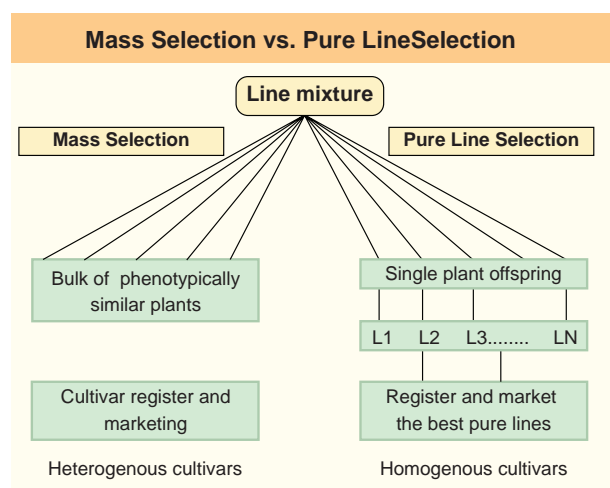


Figure 9.9 : Mass selection vs Pureline selection

b. Pureline selection: Johanssen in 1903 coined the word pureline. It is a collection

of plants obtained as a result of repeated self-pollination from a single homozygous individual. Hence, a variety formed by this method shows more homozygosity with respect to all genes. The disadvantage of this type is that the new genotypes are never created and they are less adaptable and less stable to the environmental fluctuations.

c. Clonal Selection: In asexually propagated crop, progenies derived from a plant resemble in genetic constitution with the parent plant as they are mitotically divided. Based on their phenotypic appearance, clonal selection is employed to select improved variety from a mixed population (clones). The selected plants are multiplied through vegetative propagation to give rise to a clone. The genotype of a clone remains unchanged for a long period of time.

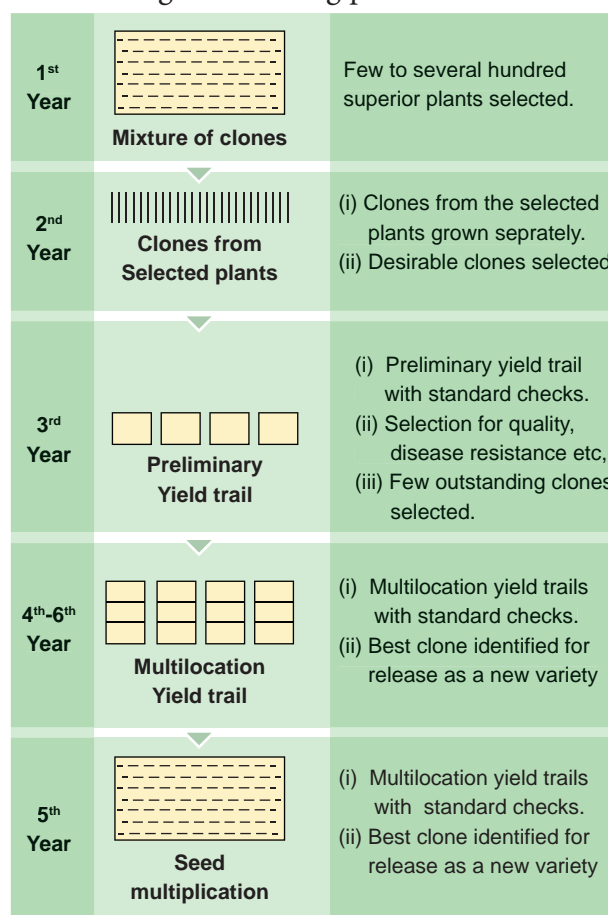


Figure 9.10 Clonal Selection

9.6.3. Hybridization

Hybridization is the method of producing new crop varieties in which two or more plants of unlike genetically constitution is all crossed

together that result in a progeny called hybrid. Hybridization offers improvement in crop and is the only effective means of combining together the desirable characters of two or more varieties or species. The first natural hybridization was observed by Cotton Mather in maize.

Steps in Hybridization

Steps involved in hybridization are as follows.

1. **Selection of Parents:** Male and female plants of the desired characters are selected. Both should be tested for their homozygosity.
2. **Emasculation:** It is a process of removal of anthers to prevent self pollination before dehiscence of anther.
3. **Bagging:** The stigma of the flower is protected against any undesirable pollen grains, by covering it with a bag .



Figure 9.11 a & b: Emasculation and Bagging (Wheat)

4. **Crossing:** Transfer of pollen grains from selected male flower to the stigma of the female emasculated flower.
5. **Harvesting seeds and raising plants:** The pollination leads to fertilization and finally seed formation takes place. The seeds are grown into new generation which are called hybrids.

Types of Hybridization

According to the relationship between plants, the hybridization is divided into.

- i. **Intravarietal hybridization** - The cross between the plants of same variety. Such crosses are useful only in self-pollinated crops.

- ii. **Intervarietal hybridization** - The cross between the plants belonging to two different varieties of the same species and is also known as intraspecific hybridization. This technique has been the basis of improving self-pollinated as well as cross pollinated crops

- iii. **Interspecific hybridization** - The cross between the plants belonging to different species belonging to the same genus is also called intragenic hybridization. It is commonly used for transferring the genes of disease, insect, pest and drought resistance from one species to another.

Example: *Gossypium hirsutum* x *Gossypium arboreum* – Deviraj.



Figure 9.12 Flower -

(a) *G. hirsutum* (b) *G. arboreum*

- iv. **Intergeneric hybridization** – The crosses are made between the plants belonging to two different genera. The disadvantages are hybrid sterility, time consuming and expensive procedure. **Example:** *Raphanobrassica*, *Triticale*. (Refer chapter 4 for detailed illustration)

9.6.4. Heterosis

Heterosis (hetero- different; sis - condition) G.H. Shull was the first scientist to use the term heterosis in 1912. The superiority of the F1 hybrid in performance over its parents is called heterosis or hybrid vigour. Vigour refers to increase in growth, yield, greater adaptability of resistance to diseases, pest and drought. Vegetative propagation is the best suited measure for maintaining hybrid vigour, since the desired characters are not lost and can persist over a period of time. Many breeders believe that the magnitude of heterosis is directly related to the degree of genetic diversity between the two parents. Depending on the nature, origin, adaptability



and reproducing ability heterosis can be classified as:

- i. **Euheterosis**- This is the true heterosis which is inherited and is further classified as:
 - a. **Mutational Euheterosis** - Simplest type of euheterosis and results from the sheltering or eliminating of the deleterious, unfavourable often lethal, recessive, mutant genes by their adaptively superior dominant alleles in cross pollinated crops.
 - b. **Balanced Euheterosis** - Well balanced gene combination which is more adaptive to environmental conditions and agricultural usefulness.
- ii. **Pseudoheterosis** - Also termed as luxuriance. Progeny possess superiority over parents in vegetative growth but not in yield and adaptation, usually sterile or poorly fertile.

9.6.5. Mutation Breeding

Muller and Stadler (1927- 1928) coined the term mutation breeding. It represents a new method of conventional breeding procedures as they have the advantage of improving the defect without losing agronomic and quality character in agriculture and crop improvement. Mutation means the sudden heritable changes in the genotype or phenotype of an organism. Gene mutations are of considerable importance in plant breeding as they provide essential inputs for evolution as well as for re-combination and selection. It is the only method for improving seedless crops.

Radiation such as UV short wave, X-ray, Alpha (α), Beta (β), Gamma waves and many chemicals such as cesium, EMS (ethyl methane sulfonate), nitromethylurea induce mutation to develop new varieties of crops. **Example:** Triple gene dwarf wheat with increase in yield and height. Atomita 2 - rice with salinity tolerance and pest resistance.

9.6.6. Polyploid Breeding

Majority of flowering plants are diploid ($2n$). The plants which possess more than two sets of chromosome are called polyploids. Polyploidy is a major force in the evolution of both wild and cultivated plants. Polyploidy often



Gamma Garden or Atomic Garden:

Is a form of mutation breeding where plants are exposed to radioactive sources

typically cobalt-60 or caesium-137 in order to generate desirable mutation in crop plants. The first Gamma garden in India is Bose Research Institute at Calcutta in 1959 and the second is IARI in 1960 which produced large variation in short type.

exhibits increased hybrid vigour, increased heterozygosity, increase tolerance to both biotic and abiotic stresses, buffering of deleterious mutations. In addition, polyploidy often results in reduced fertility due to meiotic error allowing the production of seedless varieties.

When chromosome number is doubled by itself in the same plant, is called autopolyploidy. Example: A triploid condition in sugarbeets, apples and pear has resulted in the increase in vigour and fruit size, large root size, large leaves, flower, more seeds and sugar content in them. It also resulted in seedless tomato, apple, watermelon and orange. Polyploidy can be induced by the use of colchicine to double the chromosome number. Allopolyploids are produced by multiplication of chromosome sets that are initially derived from two different species. Example: *Triticale* (*Triticum durum* \times *secale cereale*) *Raphanobrassica* (*Brassica oleraceae* \times *Raphanus sativus*).

9.6.7. Green Revolution

Green revolution the term was coined by William S.Gaud in (1968). It is defined as the cumulative result of a series of research, development, innovation and technology transfer initiatives. Agricultural production (especially wheat and rice) manifolds worldwide particularly in the developing countries between the 1940's and the late 1960's.

The Green revolution or third Agricultural Revolution is the intensive plan of 1960's to increase crop yield in developing countries by introducing the high yielding, resistant varieties, increased irrigation facilities, fertilizer application and better agricultural management.

In 1963 semi-dwarf wheat of Mexico was introduced from which India got five prolonged strategies for breeding a wide range of high varieties like Sonora 64, Sonalika and Kalyansona possessing a broad spectrum of resistance to major biotic and abiotic condition. Same as wheat M.S.Swaminathan produced the first semi-dwarf fertiliser responsive hybrid variety of rice_TNI (Taichung Native-1) in 1956 from Taiwan. The derivatives were introduced in 1966. Later better yielding semi dwarf varieties of rice Jaya and Ratna developed in India.



NORIN 10 – The cultivars found that Norin 10 dwarfing genes have high photosynthetic rate per unit leaf area and increase respiratory activity. Gonjiro Inazuka selected the semi-dwarf wheat variety that became Norin 10. He would have never thought that the semi dwarf genes would not only revolutionize the world of wheat but also helped to save more than one billion lives from hunger and starvation.

Plant Breeding for Developing Resistance to diseases

Some crop varieties bred by hybridization and selection, for disease resistance to fungi, bacteria and viral diseases are released (Table 9.1).

Crop	Variety	Resistance to diseases
Wheat	Himgiri	Leaf and Stripe rust, hill bunt
Brassica	Pusa swarnim (Kara rai)	White rust
Cauliflower	Pusa Shubhra, Pusa snowball K-1	Black rot and curl blight black rot
Cowpea	Pusa Komal	Bacterial blight
Chilli	Pusa Sadabahar	Chilly mosaic virus, Tobacco mosaic virus and Leaf curl.

Table 9.1: Disease resistance varieties

Norman E. Borlaug: The plant pathologist plant breeder devoted his life at the International Maize and Wheat improvement centre at Sonora in Mexico. He developed a new high yielding, rust resistant, non-lodging dwarf wheat varieties like Norin-10, Sonora-64, Lerma rojo-64, etc. which are now being cultivated in many countries. This formed the base for 'green revolution'. He was awarded a Nobel prize for Peace in 1970.



Dr. M. S. Swaminathan: He is a pioneer mutation breeder. He has produced Sharbati Sonora, is the amber grain coloured variety of wheat by mutation, which is responsible for green revolution in India.



Dr. Swaminathan is called "Father of green revolution in India".

Nel Jayaraman: Mr. Jayaraman, hails from Adirangam village in Tiruvarur district. He was a disciple of Dr. Nammalvar and state co-ordinator of 'Save our rice campaign, Tamil Nadu. He strived hard for conservation of traditional rice varieties. He had trained a team of farmers and regularly update them on the current issues that affect them.

In 2005, he organized a first ever traditional paddy seed festival in his farm as an individual. The seed festival in May 2016 at Adhirangam was 10th in a row and in which 156 different traditional varieties were distributed to more than 7000 farmers across Tamil Nadu. He was invited by the Philippines Government to give a talk at the International Rice Research Institute (IRRI) on his work and mission. In 2011, he received the State Award for best organic farmer for his contribution to organic farming, and in the year 2015, he received the National Award for best Genome Savior.



Resistance to yellow mosaic virus in bhindi (*Abelmoschus esculentus*) was transferred from a wild species and resulted in a new variety of *A. Esculentus* called Parbharni kranti.

Plant Breeding for Developing Resistance to Insect Pests

Insect resistance in host crop plants may be due to morphological, biochemical or physiological characteristics. Hairy leaves in several plants are associated with resistance to insect pests.

Example: resistance to jassids in cotton and cereal leaf beetle in wheat. In wheat, solid stems lead to non-preference by the stem sawfly and smooth leaves and nectar-less cotton varieties do not attract bollworms. High aspartic acid, low nitrogen and sugar content in maize leads to resistance to maize stem borers.



Crop	Variety	Insect pests
Brassica (rapeseed mustard)	Pusa Gaurav	Aphids
Flat been	Pusa Sem 2 Pusa Sem 3	Jassids, aphids and fruit borer
Okra (Bhindi)	Pusa Sawani Pusa A-4	Shoot and Fruit borer

Table 9.2 Pest resistance varieties

9.7 Modern Plant Breeding

In the milestones of plant breeding methods Genetic Engineering, Plant tissue culture, Protoplastic fusion or somatic hybridisation, Molecular marking and DNA finger printing are some of the modern plant breeding tools used to improve the crop varieties. We have already discussed about the various techniques and application of the above mentioned concepts in Unit VIII.

New Plant Engineering Techniques / New Breeding Techniques (NBT)

NBT are a collection of methods that could increase and accelerate the development of new

traits in plant breeding. These techniques often involve genome editing, to modify DNA at specific locations **within the plants** to produce new traits in crop plants. The various methods of achieving these changes in traits include the following.

- Cutting and modifying the genome during the repair process by tools like CRISPR /Cas.
- Genome editing to introduce changes in few base pairs using a technique called Oligonucleotide-directed mutagenesis (ODM).
- Transferring a gene from an identical or closely related species (cisgenesis)
- Organising processes that alter gene activity without altering the DNA itself (epigenetic methods).

Summary

Economic Botany deals with the relationship between people and economically important plants to fulfill the three basic needs of life such as food, clothing and shelter. Domestication, a term often used for a more intricate process, involves the genetic alteration of plants which did not appear at once, but rather over a substantial period of time, perhaps hundreds of years for some species. In the history of agriculture Vavilov has given the eight main centres of origin of plants were now divided into 12 centres of origin. In Organic agriculture biofertilizers are microbial inoculants which all ecofriendly, more effective even though cost effective than chemical fertilizers. *Rhizobium*, *Azolla*, VAM and sea weeds are used as fertilizers which increase the crop yield many fold.

Plant breeding is a purposeful manipulation of plant species in order to create desirable genotype and phenotype for the benefit of mankind. Plant introduction, selection, hybridization, heterosis, mutation breeding, polyploidy breeding and green revolution are the different methods of conventional breeding.



Evaluation

1. **Assertion:** Genetic variation provides the raw material for selection
Reason: Genetic variations are differences in genotypes of the individuals.
- a) Assertion is right and reason is wrong.
b) Assertion is wrong and reason is right.
c) Both reason and assertion is right.
d) Both reason and assertion is wrong.
2. While studying the history of domestication of various cultivated plants _____ were recognized earlier
- a) Centres of origin
b) Centres of domestication
c) Centres of hybrid
d) Centres of variation
3. Pick out the odd pair.
- a) Mass selection - Morphological characters
b) Purline selection - Repeated self pollination
c) Clonal selection - Sexually propagated
d) Natural selection - Involves nature
4. Match Column I with Column II
- | Column I | Column II |
|------------------------|---------------------------|
| i) William S. Gaud | I) Heterosis |
| ii) Shull | II) Mutation breeding |
| iii) Cotton Mather | III) Green revolution |
| iv) Muller and Stadler | IV) Natural hybridization |
- a) i - I, ii - II, iii - III, iv - IV
b) i - III, ii - I, iii - IV, iv - II
c) i - IV, ii - II, iii - I, iv - IV
d) i - II, ii - IV, iii - III, iv - I
5. The quickest method of plant breeding is
- a) Introduction b) Selection
c) Hybridization d) Mutation breeding
6. Desired improved variety of economically useful crops are raised by
- a) Natural Selection b) hybridization
c) mutation d) biofertilisers
7. Plants having similar genotypes produced by plant breeding are called



- a) clone b) haploid
c) autopolyploid d) genome
8. Importing better varieties and plants from outside and acclimatising them to local environment is called
- a) cloning b) heterosis
c) selection d) introduction
9. Dwarfing gene of wheat is
- a) pal 1 b) Atomita 1
c) Norin 10 d) pelita 2
10. Crosses between the plants of the same variety are called
- a) interspecific b) inter varietal
c) intra varietal d) inter generic
11. Progeny obtained as a result of repeat self pollination a cross pollinated crop to called
- a) pure line b) pedigree line
c) inbreed line d) heterosis
12. Jaya and Ratna are the semi dwarf varieties of
- a) wheat b) rice
c) cowpea d) mustard
13. Which one of the following are the species that are crossed to give sugarcane varieties with high sugar, high yield, thick stems and ability to grow in the sugarcane belt of North India?
- a) *Saccharum robustum* and *Saccharum officinarum*
b) *Saccharum barberi* and *Saccharum officinarum*
c) *Saccharum sinense* and *Saccharum officinarum*
d) *Saccharum barberi* and *Saccharum robustum*
14. Match column I (crop) with column II (Corresponding disease resistant variety) and select the correct option from the given codes.
- | Column I | Column II |
|--------------|---------------------|
| I) Cowpea | i) Himgiri |
| II) Wheat | ii) Pusa komal |
| III) Chilli | iii) Pusa Sadabahar |
| IV) Brassica | iv) Pusa Swarnim |
- | I | II | III | IV |
|-------|-----|-----|-----|
| a) iv | iii | ii | i |
| b) ii | i | iii | iv |
| c) ii | iv | i | iii |
| d) i | iii | iv | ii |

15. A wheat variety, Atlas 66 which has been used as a donor for improving cultivated wheat, which is rich in

- a) iron b) carbohydrates
c) proteins d) vitamins

16. Which one of the following crop varieties correct matches with its resistance to a disease?

Variety	Resistance to disease
a) Pusa Komal	Bacterial blight
b) Pusa Sadabahar	White rust
c) Pusa Shubhra	Chilli mosaic virus
d) Brassica	Pusa swarnim

17. Which of the following is incorrectly paired?

- a) Wheat - Himgiri
b) Milch breed - Sahiwal
c) Rice - Ratna
d) Pusa Komal - Brassica

18. Match list I with list II

List I	List II
Biofertilizer	Organisms
i) Free living N ₂	a) <i>Aspergillus</i>
ii) Symbiotic N ₂	b) <i>Amanita</i>
iii) P Solubilizing	c) <i>Anabaena azollae</i>
iv) P Mobilizing	d) <i>Azotobacter</i>

- a. ic, iia, iiib, ivd b. id, iic, iiia, ivb.
c. ia, iic, iiib, ivd c. ib, iia, iiid, ivc.

19. Differentiate primary introduction from secondary introduction.

20. How are microbial inoculants used to increase the soil fertility?

21. What are the different types of hybridization?

22. Explain the best suited type followed by plant breeders at present?

23. Write a note on heterosis.

24. List out the new breeding techniques involved in developing new traits in plant breeding.

Glossary

Acclimatization : The adaptation of an individual to a changed climate or the adjustment of a species or a population to a changed environment over a number of generations.

Agronomy : Science of farming

Germplasm Collection : The entire collection (of plants / seeds) having all the diverse alleles for all genes in a given crop is called **germplasm collection**.

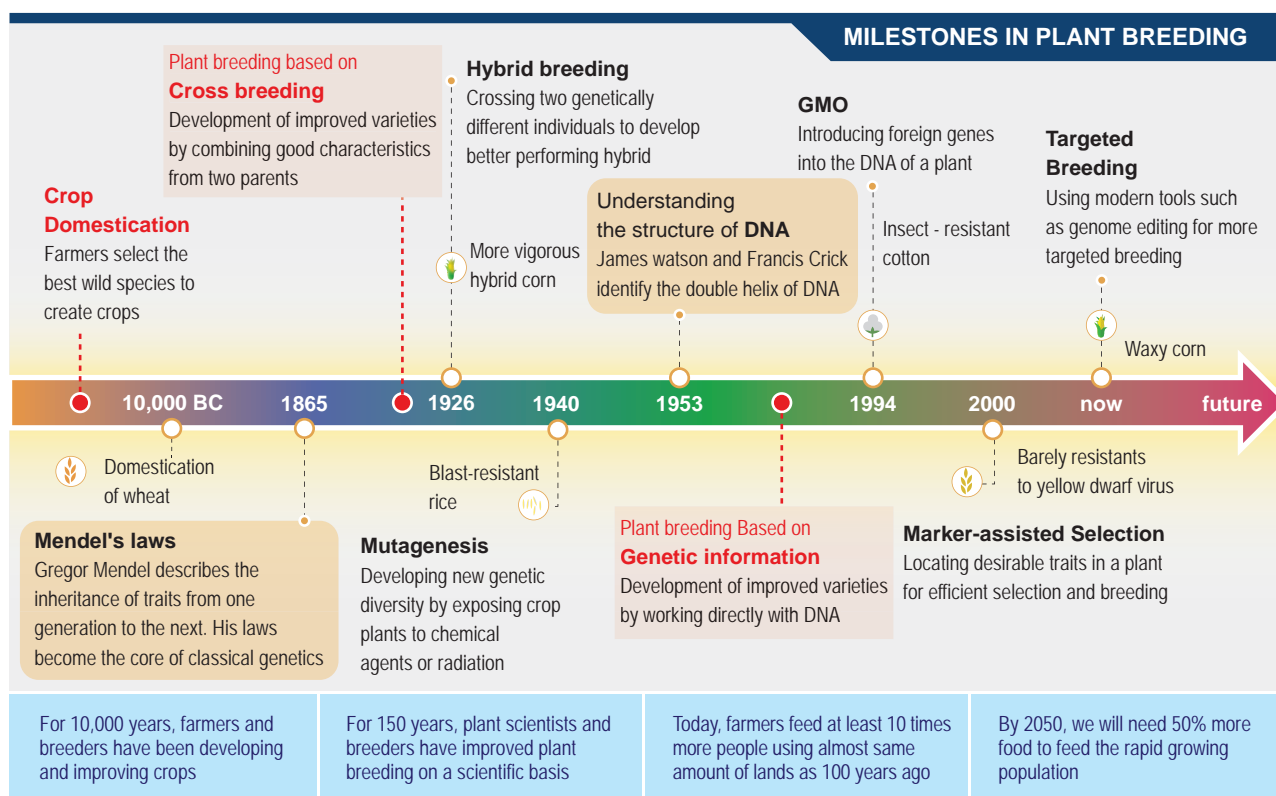
Non recurrent parent : The parent of a hybrid that is not again used as a parent in backcrossing

Quarantine : Strict isolation imposed to prevent the spread of disease

Strain : A group of similar individuals from a common origin.

APPENDIX

Vavilov's Centre of Crop Origin		Crops domesticated
1	China	Foxtail millet, soybean, bamboo, onion, crucifers.
2	India	Rice, sugarcane, mango, orange, eggplant, sesame.
2 a	South East Asia	Rice, banana, coconut, clove, hemp.
3	Central East	Wheat, pea, hemp, cotton etc.
4	The Near East	Wheat, rye, many subtropical and tropical fruits.
5	Mediterranean	Olive, vegetables, oil yielding plants, wheats
6	Ethiopia (Abyssinian)	Wheat, barley, sesame, castor, coffee.
7	Mesoamerica (South Mexican & Central American Centre)	Maize, bean, sweet potato, papaya, guava, tobacco.
8	South America	Tomato, pine-apple
8 a	The Chiloe Centre	Potato
8 b	The Brazilian -Paraguayan Centre	Groundnut, cashew nut, pine apple, peppers, rubber.



Milestones in Plant Breeding

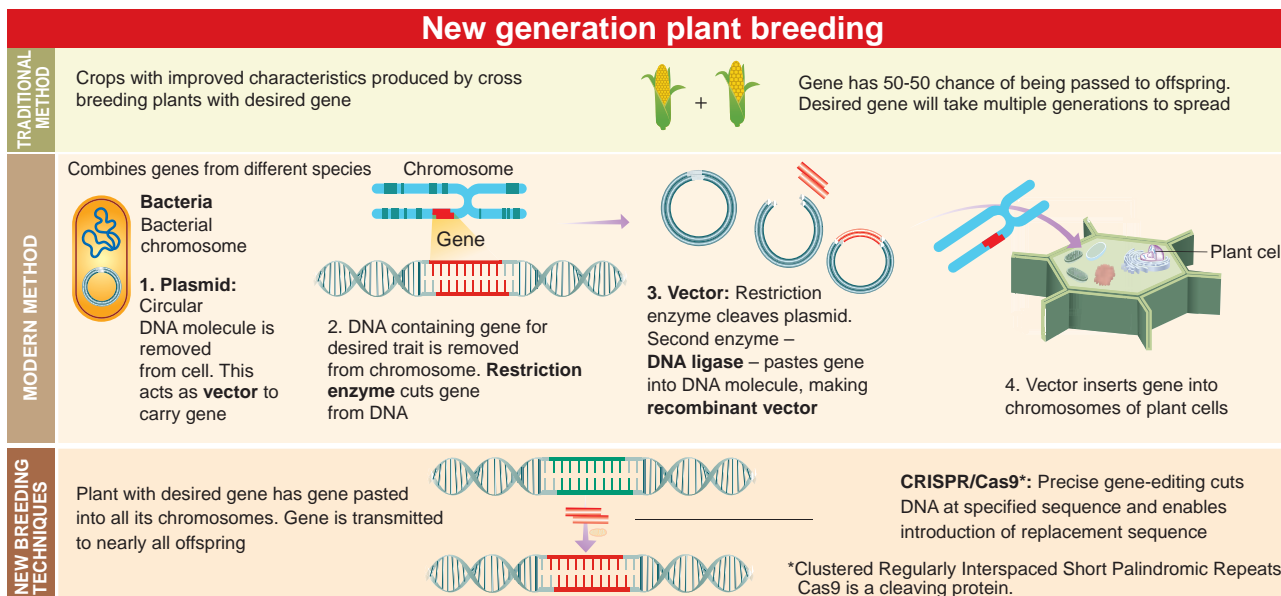
Biofortification – breeding crops with higher levels of vitamins and minerals or higher protein and healthier fats – is the most practical means to improve public health.

Breeding for improved nutritional quality is undertaken with the objectives of improving

- Protein content and quality
- Oil content and quality
- Vitamin content and
- Micronutrient and mineral content

In 2000, maize hybrids that had twice the amount of amino acids, lysine and tryptophan, compared to existing maize hybrids were developed. Wheat variety, Atlas 66 having a high protein content, has been used a donor for improving cultivated wheat. It has been possible to develop an iron fortified rice variety containing over five times as much iron as in commonly consumed varieties. The Indian Agricultural Research Institute, New Delhi has also released several vegetable crops that are rich in vitamins and minerals, example: vitamin A enriched carrots, spinach, pumpkin; vitamin C enriched bitter melon, bathua, mustard, tomato; iron and calcium enriched spinach and protein enriched beans – broad, lablab, French garden peas.

Sugar cane: *Saccharum bareri* was originally grown in North India, but had poor sugar content and yield. Tropical canes grown in South India *Saccharum officinarum* had thicker stems and higher sugar content but did not grow well in North India. These two species were successfully crossed to get sugar cane varieties combining the desirable qualities of high yield, thick stems, high sugar and ability to grow in the sugarcane areas of North India.



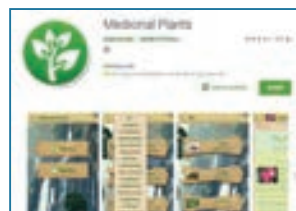
Sequential development of plant breeding techniques



ICT Corner

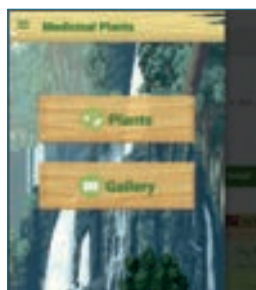
Plant Breeding

Let us know about the details of Medicinal Plants in detail.



Steps

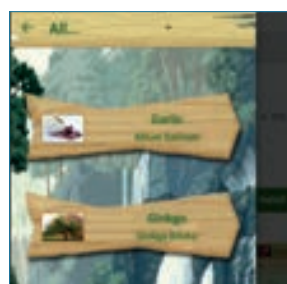
- Type the URL or scan the QR code to open the activity page then Introduction page will open.
- Click on 'Plants' it will display list of Medicinal Plants.
- Click on each plants individually on the next screen it displays the description, harvesting and properties of the plants.
- Click the option on the top left side of the front page to see the preparation of oils, Powder etc.,



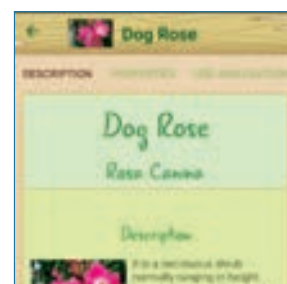
Step 1



Step 2



Step 3



Step 4

URL:

<https://play.google.com/store/apps/details?id=com.dssoft.plantasmedicinales>

* Pictures are indicative only