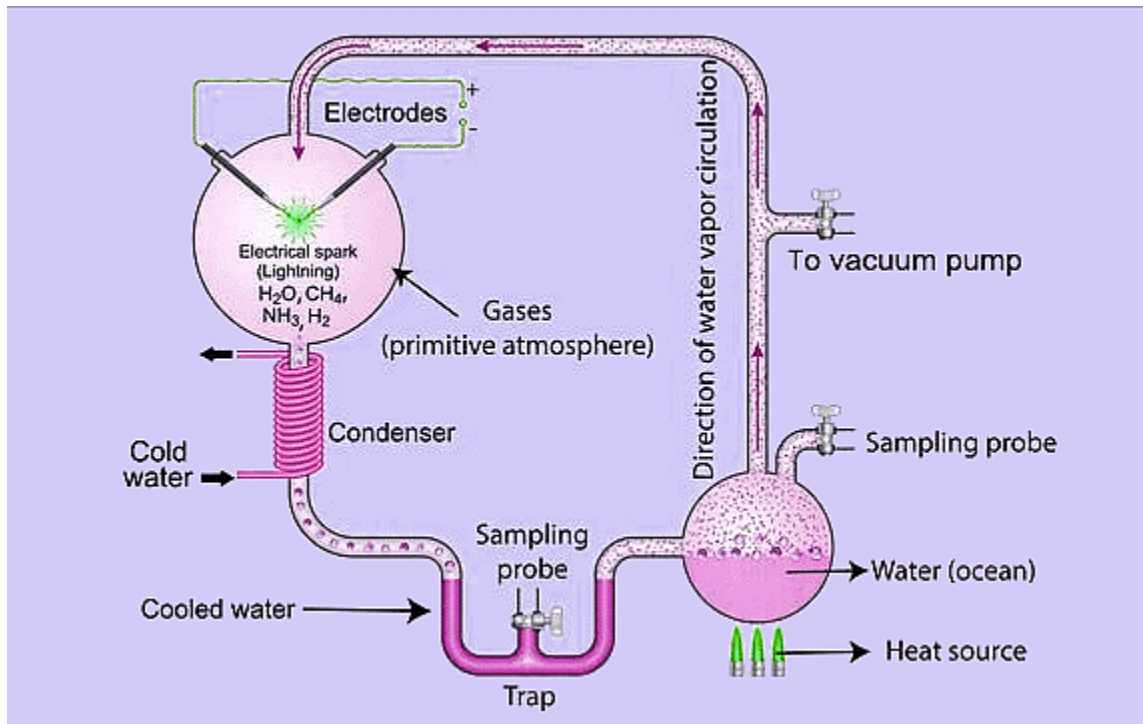
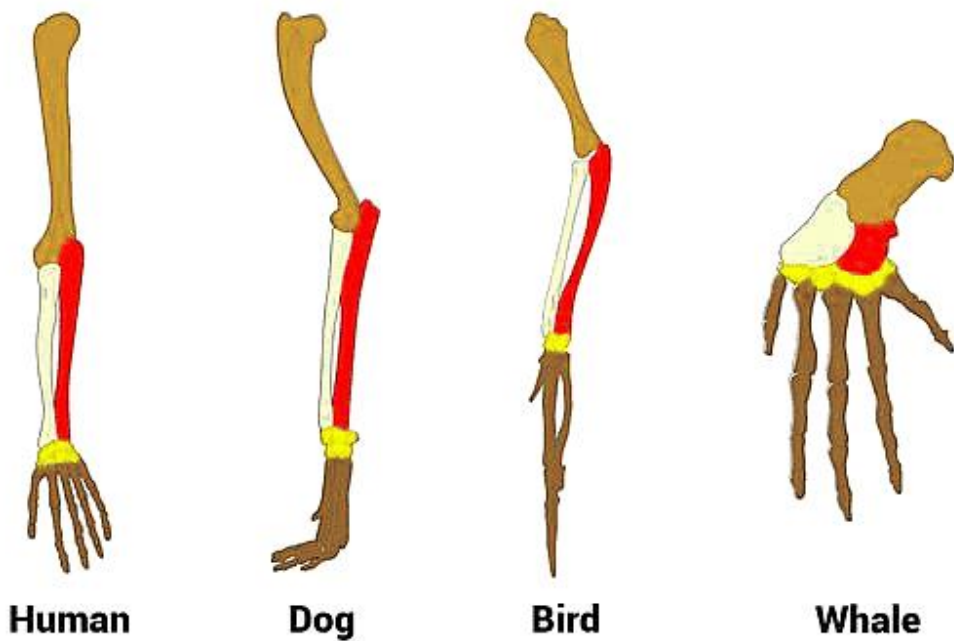


# Evolution

## Urey-Miller Experiment



## Example of Homologous Organs



## Example of Analogous Structures



Wing of bird

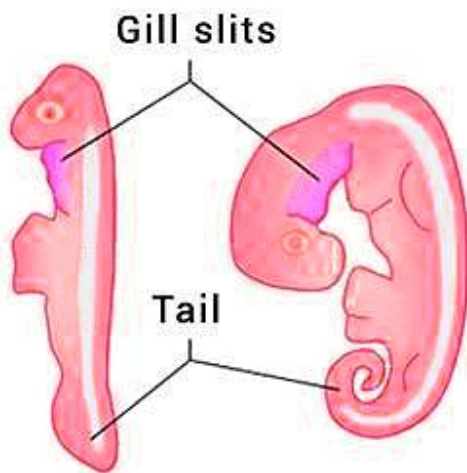


Wing of bat



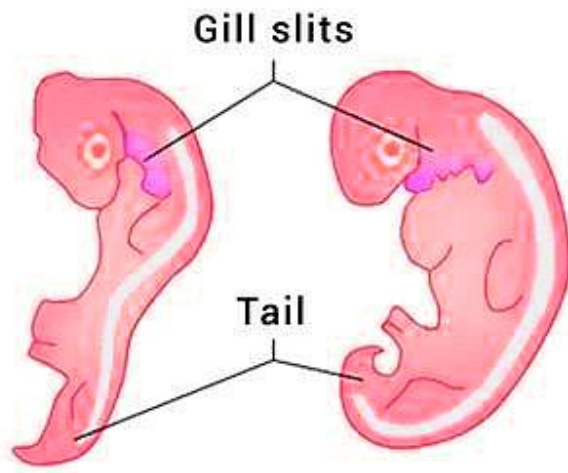
Wing of insect

## Embryological Evidence for Evolution



Fish

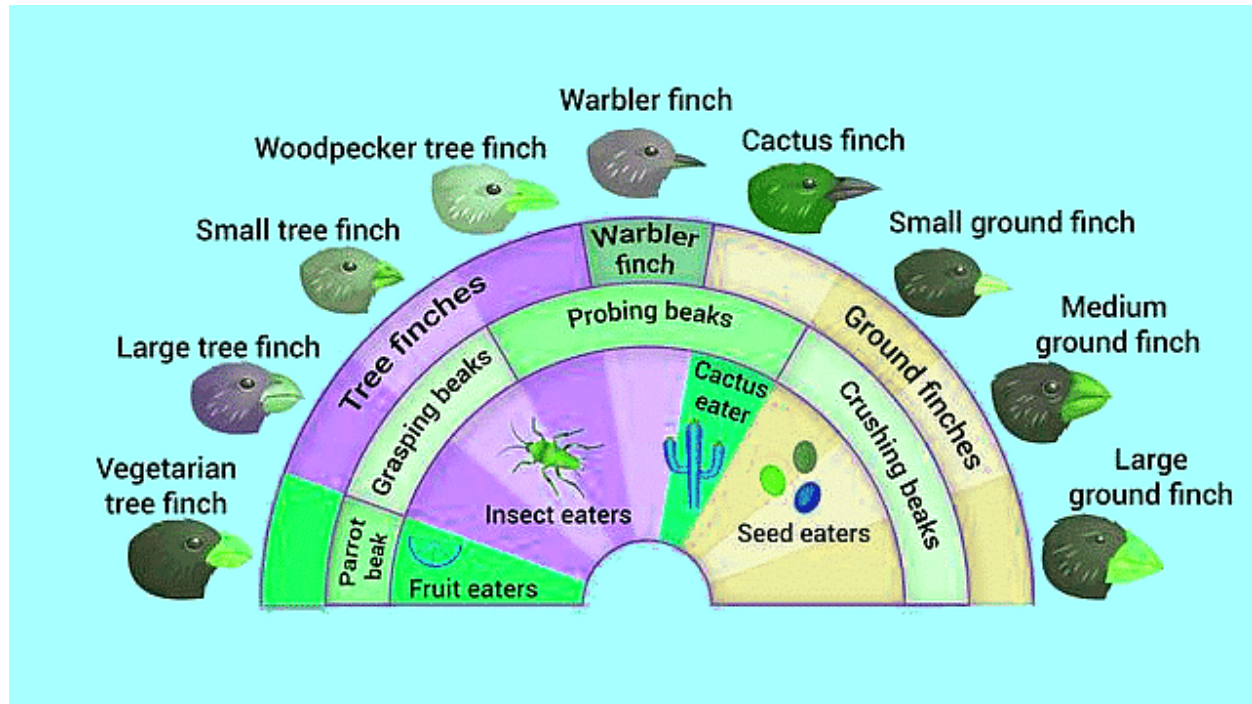
Reptile



Bird

Human

## Adaptive Radiation Example-Darwin's Finches



## Evolution of Plant Forms

