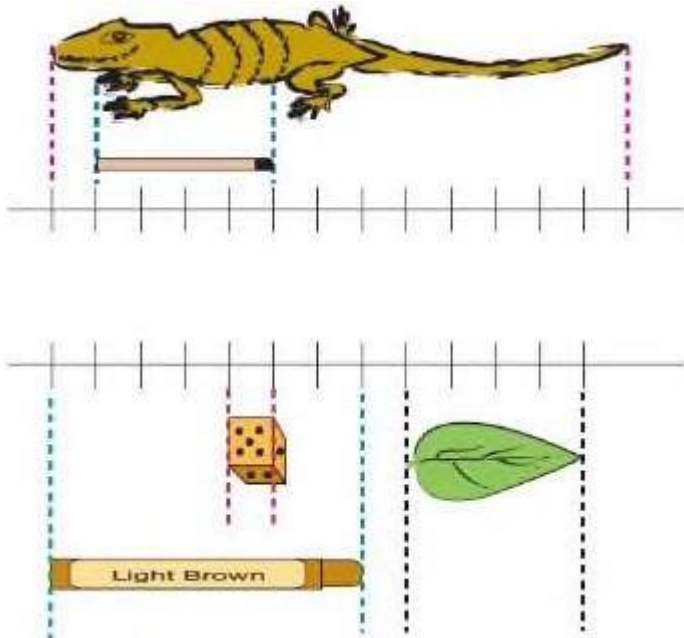


CHAPTER – 4

LONG AND SHORT

Page No 48:

Question 1:

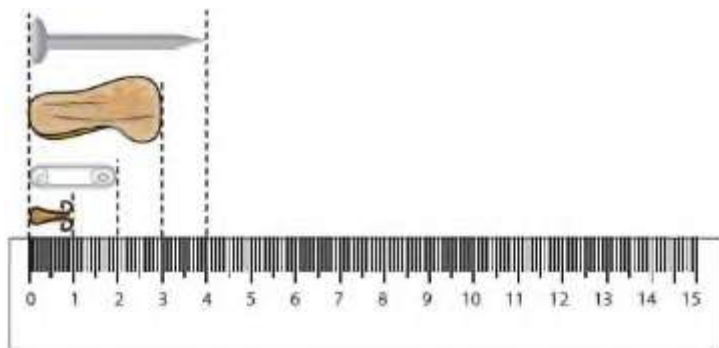


The matchstick is 4 centimetres long. The die is 1 centimetre from every side. The lizard is 13 centimetres long. The leaf is _____ centimetres long. The wax Colour is _____ centimetres long.

Answer:

The leaf is 4 centimetres long. The wax colour is 7 centimetres long.

Question 2: Now, look at a scale that you find in a geometry box. How many centimetres does it have? _____ The small scale that you mostly use in school is like this one.



Is it easier to start measuring from the 0 mark? Look at the things drawn near the scale and find out their lengths.

Answer:

The small scale we mostly use in school is 15 cm long.

Yes, it is easier to start measuring things from the zero mark.

The length of the nail is 4 cm. The length of the pebble is 3 cm. The length of the safety pin is 2 cm. The length of the paper clip is 1 cm.

Page No 49:

Question 1: What are the little lines on the scale used for?

Answer:

Each little line on the scale is used to measure 0.1 cm.

Question 2: Look for things that are – About 10 centimetres long – Between 10 and 20 centimetres long – Less than 1 cm long.

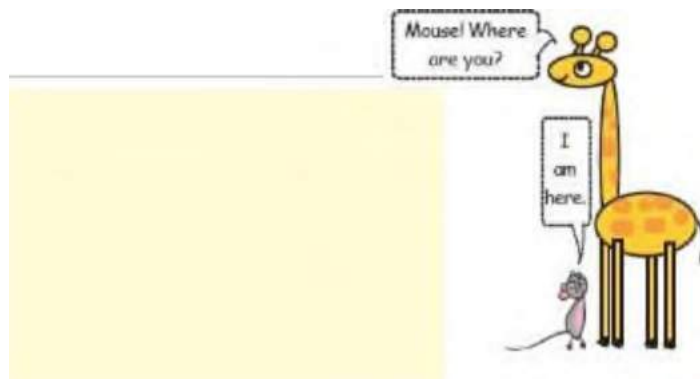
Answer:

- Things that are 10 cm long are a color pencil and a photograph.
- Things that are between 10 and 20 cm long are a mobile phone and a notebook.

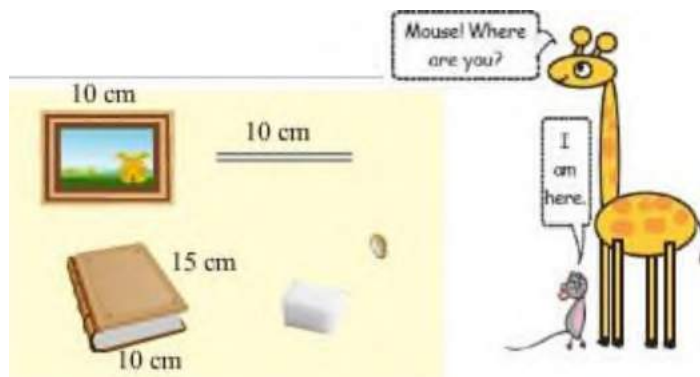
– Things that are less than 1 cm long are an ant, a lemon seed and a sugar crystal.

Disclaimer: *The answer may vary from student to student, based on his/her observation. It is highly recommended that the students prepare the answer on their own. The answer provided here is for reference only.*

Question 3: Draw some of them here.

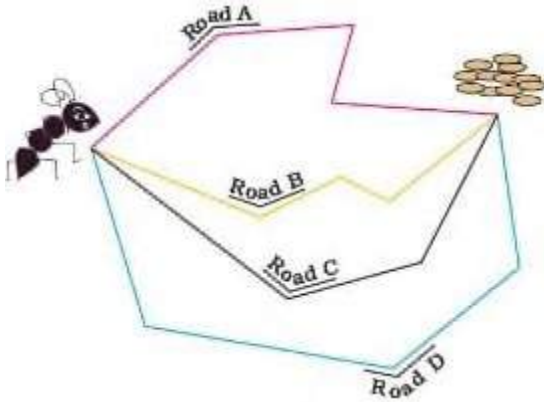


Answer:

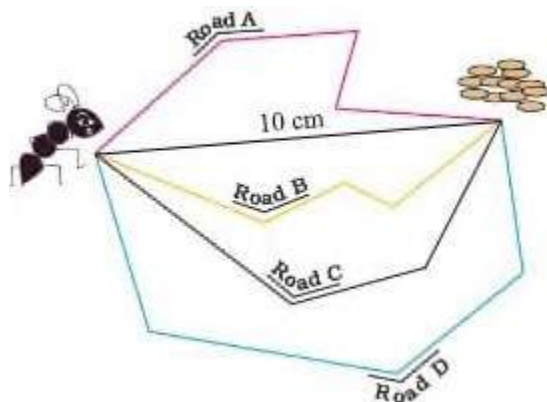


Page No 52:

Question 1: Gibli and the Grains Ant Gibli has to reach the grains. She is looking for the shortest road. Can you tell her which is the shortest?



Can you draw a road shorter than these? What is the length of that road?



Answer:

Road B is the shortest among all the four paths.

Yes, there can be a road shorter than these and the length of that road is 10 cm.

Page No 56:

Question 1: Centimetres or Metres? Which of these will be in centimetres and which will be in metres? • Width of a computer screen • Length of a Pagdi worn by Sikhs • Height of a 1-year old child • Length of a banana • Waist of an elephant • Height of a sugarcane • Depth of a well • Height of your mother • Distance from school to home • Length of your father's arm

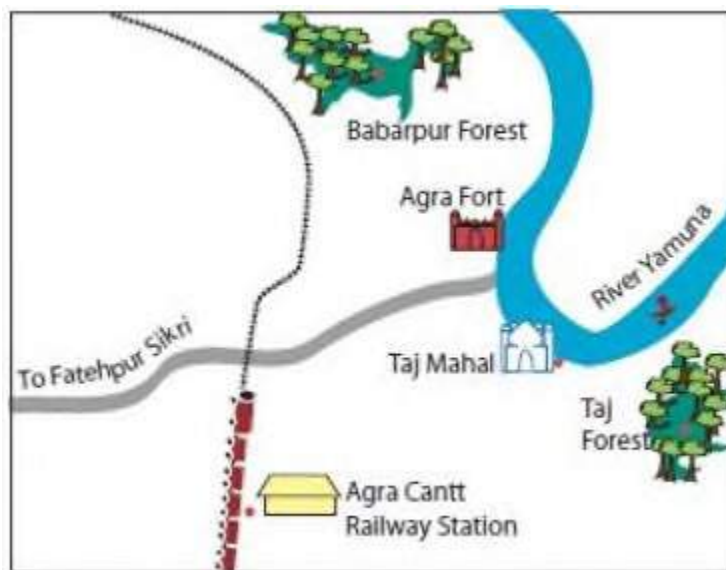
Answer:

Things that are measured in centimetres: 1. Width of a computer screen 2. Height of 1-year old child 3. Length of a banana 4. Height of a sugarcane 5. Height of your mother 6. Length of your father's arm

Things that are measured in metres: 1. Length of a Pagdi worn by Sikhs 2. Waist of an elephant 3. Depth of a well 4. Distance from school to home

Page No 57:

Question 1:



Now look at the distances between these places (for kilometres we write km). • Agra Cantt. Railway Station to Taj Mahal – 5 km • Taj Mahal to

Agra Fort – 2 km • Agra Fort to Fatehpur Sikri – 40 km Now find from the map • Which is farther from Agra Cantt. Railway Station — Taj Mahal or Fatehpur Sikri?

 shows the railway line.

Which of these is nearer to the railway line: • Babarpur forest or Taj forest? • Agra Fort or Taj Mahal? Which is closer to the river Yamuna: • Taj Mahal or the Railway Station?

Answer:

- Fatehpur Sikri is farther from Agra Cantt Railway Station.
- Babarpur Forest is nearer to the railway line.
- Agra Fort is nearer to the railway line.
- Taj Mahal is closer to the river Yamuna.

Page No 58:

Question 1: Match the Correct Length Draw lines to match each picture with how long it can be.



2 kilometres



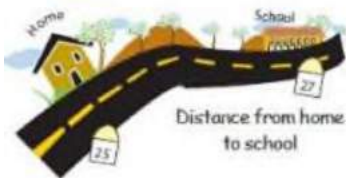
5 metres



10 centimetres



1 centimetre



1 metre

Answer:

