

Practical Exercise 2

External anatomy of cow, buffaloes and goat

Objectives: *To familiarize the students with external anatomy of cow, buffalo & goat*

Introduction

Study of external anatomy of dairy animals can be used to identify different breeds, locating external abnormalities for necessary treatment and in judging of individual animals within a breed.

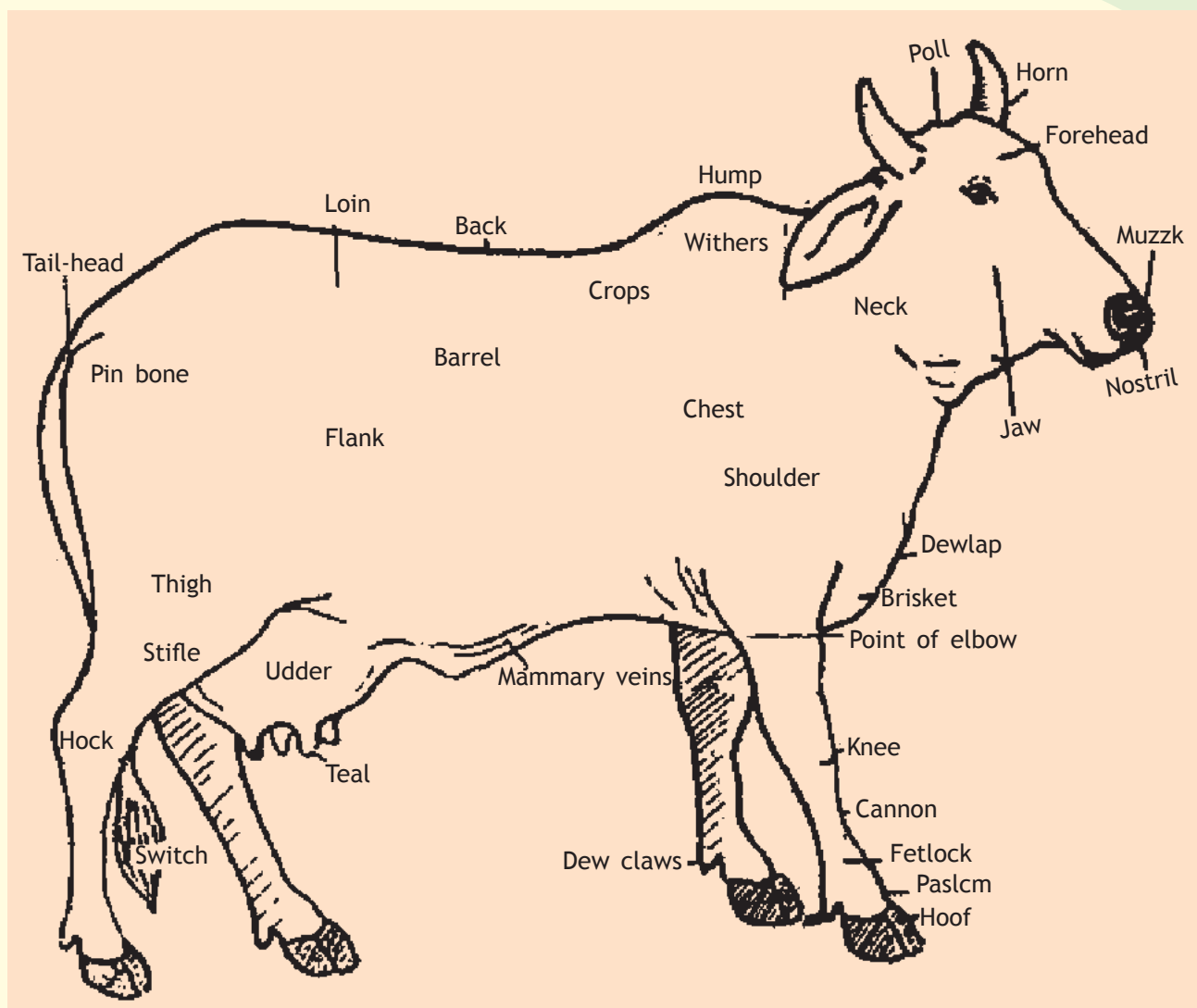
Materials required

- Sketch of a cow, buffalo and goat with labelled body parts. (A sketch of a cow is annexed for use)
- A mature cow, buffalo and goat.

External body parts of a cow

Procedure

- Study the labeled body parts on the sketch.
- Observe carefully the location of different parts on the body of cow, buffalo and goat.



External body parts of a cow

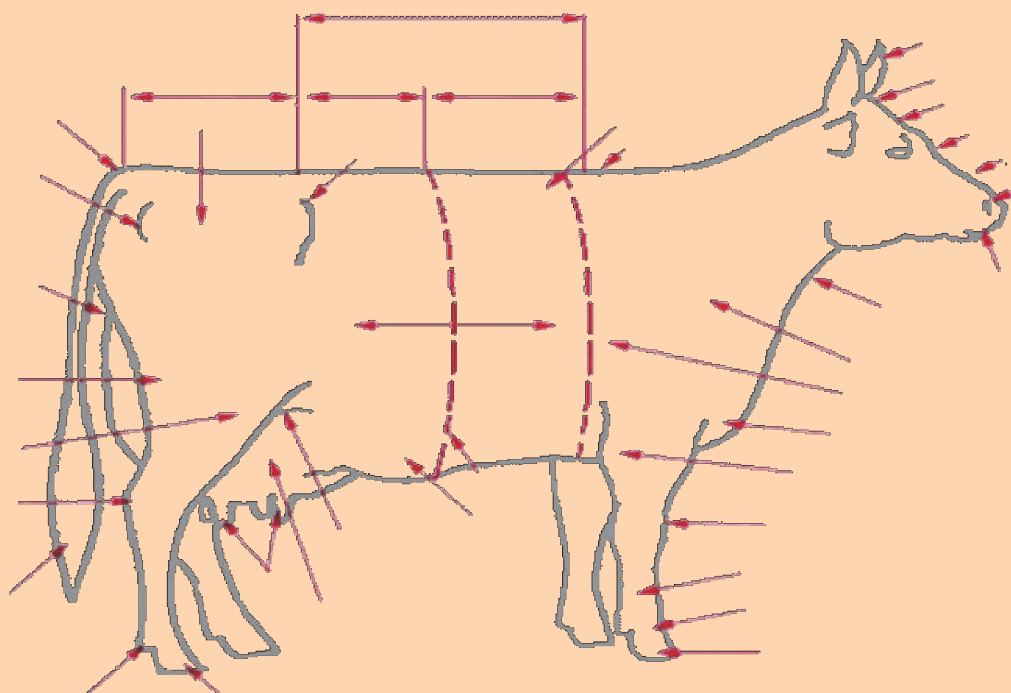
- Practice locating and identifying the various external parts in body of animals.
- Study the differences in external parts of cow, buffalo and goat.

Observation

- Take another sketch and label parts looking at the body of animal

EXERCISE

1) Label the various body parts of cow as indicated by arrows in given figure.



2) What are the major divisions of animal body?

3) What are the important differences in physical appearance of a cow and buffalo ?