



GOVERNMENT OF TAMILNADU

STANDARD NINE

MATHEMATICS

A publication under Free Textbook Programme of Government of Tamil Nadu

Department Of School Education

**Untouchability is Inhuman and a Crime**

## Government of TamilNadu

First Edition - 2018

Revised Edition - 2019

(Published under new syllabus)

**NOT FOR SALE**

## Content Creation



State Council of Educational  
Research and Training

© SCERT 2018

## Printing & Publishing



Tamil NaduTextbook and Educational  
Services Corporation

[www.textbooksonline.tn.nic.in](http://www.textbooksonline.tn.nic.in)

## CONTENTS

Chapter No.	CHAPTER	Page No.	MONTH
<b>1</b>	<b>SET LANGUAGE</b>	<b>1</b>	
1.1	Introduction	1	June
1.2	Set	2	
1.3	Representation of a Set	3	
1.4	Types of Sets	6	
1.5	Set Operations	12	
1.6	Properties of Set Operations	19	
1.7	De Morgan's Laws	24	
1.8	Application on Cardinality of Sets:	29	
<b>2</b>	<b>REAL NUMBERS</b>	<b>41</b>	
2.1	Introduction	41	July
2.2	Rational Numbers	42	
2.3	Irrational Numbers	45	
2.4	Real Numbers	55	
2.5	Radical Notation	57	
2.6	Surds	60	
2.7	Rationalisation of Surds	68	
2.8	Scientific Notation	70	
<b>3</b>	<b>ALGEBRA</b>	<b>78</b>	
3.1	Introduction	78	August
3.2	Polynomials	81	
3.3	Remainder Theorem	92	
3.4	Algebraic Identities	97	
3.5	Factorisation	102	September
3.6	Division of Polynomials	108	
3.7	Greatest Common Divisor (GCD)	114	
3.8	Linear Equation in Two Variables	116	
<b>4</b>	<b>GEOMETRY</b>	<b>138</b>	
4.1	Introduction	138	July
4.2	Types of Angles	139	August
4.3	Quadrilaterals	144	October
4.4	Parts of a Circle	159	November
4.5	Properties of Chords of a Circle	162	
4.6	Cyclic Quadrilaterals	170	
4.7	Practical Geometry	174	



<b>5</b>	<b>COORDINATE GEOMETRY</b>	<b>185</b>	
5.1	Mapping the Plane	185	October
5.2	Devising a Coordinate System	187	
5.3	Distance between any Two Points	193	
5.4	The Mid-point of a Line Segment	203	
5.5	Points of Trisection of a Line Segment	208	November
5.6	Section Formula	210	
5.7	The Coordinates of the Centroid	214	
<b>6</b>	<b>TRIGONOMETRY</b>	<b>222</b>	
6.1	Introduction	222	December
6.2	Trigonometric Ratios of Some Special Angles	228	
6.3	Trigonometric Ratios for Complementary Angles	233	
6.4	Method of using Trigonometric Table	235	
<b>7</b>	<b>MENSURATION</b>	<b>248</b>	
7.1	Introduction	248	January
7.2	Heron's Formula	249	
7.3	Application of Heron's Formula in Finding Areas of Quadrilaterals	251	
7.4	Surface Area of Cuboid and Cube	253	
7.5	Volume of Cuboid and Cube	258	
<b>8</b>	<b>STATISTICS</b>	<b>266</b>	
8.1	Introduction	266	February
8.2	Collection of Data	267	
8.3	Measures of Central Tendency	269	
8.4	Arithmetic Mean	269	
8.5	Median	278	
8.6	Mode	284	
<b>9</b>	<b>PROBABILITY</b>	<b>291</b>	
9.1	Introduction	291	March
9.2	Basic Ideas	292	
9.3	Classical Approach	295	
9.4	Empirical Approach	296	
9.5	Types of Events	299	
	<b>ANSWERS</b>	<b>305</b>	



**Captions  
used in this  
Textbook**

எண்ணென்ப ஏனை எழுத்தென்ப இவ்விரண்டும்  
கண்ணென்ப வாழும் உயிர்க்கு – குறள் 392  
Numbers and letters, they are known as  
eyes to humans, they are. Kural 392

**Learning Outcomes**

To transform the classroom processes into learning centric with a set of bench marks



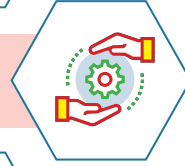
**Note**

To provide additional inputs for students in the content



**Activity / Project**

To encourage students to involve in activities to learn mathematics



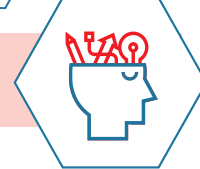
**ICT Corner**

To encourage learner's understanding of content through application of technology



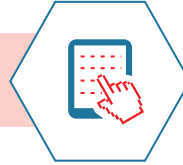
**Thinking Corner**

To kindle the inquisitiveness of students in learning mathematics. To make the students to have a diverse thinking



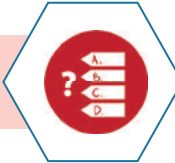
**Points to Remember**

To recall the points learnt in the topic



**Multiple Choice Questions**

To provide additional assessment items on the content



**Progress Check**

Self evaluation of the learner's progress



**Exercise**

To evaluate the learners' in understanding the content



*“The essence of mathematics is not to make simple things complicated  
but to make complicated things simple” -S. Gudder*



QR GUIDE

Let's use the QR code in the text books! How?

- Download the QR code scanner from the Google PlayStore/ Apple App Store into your smartphone
- Open the QR code scanner application
- Once the scanner button in the application is clicked, camera opens and then bring it closer to the QR code in the text book.
- Once the camera detects the QR code, a url appears in the screen. Click the url and go to the content page.

(v)

## SYMBOLS

$=$	equal to	$\sim$	similarly
$\neq$	not equal to	$\Delta$	symmetric difference
$<$	less than	$\mathbb{N}$	natural numbers
$\leq$	less than or equal to	$\mathbb{W}$	whole numbers
$>$	greater than	$\mathbb{Z}$	integers
$\geq$	greater than or equal to	$\mathbb{R}$	real numbers
$\approx$	equivalent to	$\triangle$	triangle
$\cup$	union	$\angle$	angle
$\cap$	intersection	$\perp$	perpendicular to
$\mathbb{U}$	universal Set	$\parallel$	parallel to
$\in$	belongs to	$\Rightarrow$	implies
$\notin$	does not belong to	$\therefore$	therefore
$\subset$	proper subset of	$\because$	since (or) because
$\subseteq$	subset of or is contained in	$   $	absolute value
$\not\subset$	not a proper subset of	$\simeq$	approximately equal to
$\not\subseteq$	not a subset of or is not contained in	$ (\text{or}) $	such that
$A' \text{ (or) } A^c$	complement of $A$	$\equiv \text{ (or) } \cong$	congruent
$\emptyset \text{ (or) } \{ \}$	empty set or null set or void set	$\equiv$	identically equal to
$n(A)$	number of elements in the set $A$	$\pi$	pi
$P(A)$	power set of $A$	$\pm$	plus or minus
$\Sigma$	summation	$P(E)$	probability of an event $E$



E-book



Evaluation



DIGI Links