

CHAPTER 2

Sewing Aids

General tools and sewing aids help us to enhance our sewing experience. If we have the right tools then we get our work done quickly. All sewing aids, irrespective of type, have the same primary objective to increase the effectiveness of sewing. Right tools will help us to make the sewing more successful and enjoyable

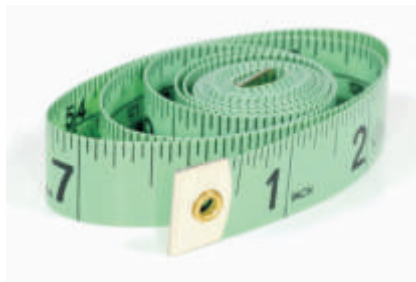
Objectives:

At the end of the chapter, the students shall be able to:

- * *Know about the different sewing aids available*
- * *Know its' uses*

a) Tape measures

This plastic tape is 60" long with small metal tips on either end. Most tape measures have imperial measurements on one side with the metric equivalent on the other.



b) Seam ripper

Seam ripper helps to make opening the seam easy.



c) Thread clipper

Thread clipper is useful for cutting stray threads. This fit neatly into the palm of the hand.



d) Dress maker's shears

This is the tool for cutting patterns as the lower blade lies flat on the fabric.



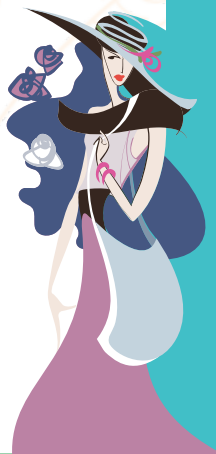
e) Pinking shears

These scissors cut zigzag, fray-resistant edges. It is excellent for finishing seams and raw edges.



f) Tailor's chalk

Chalks are ideal for marking the fabric.



g) Tracing wheel

Tracing wheel is used with dress maker's tracing paper to transfer pattern markings to wrong side of fabric. We have to use this tool with extra care.



h) Needle Threader

This tool makes it easy to thread needle of all kinds. The wire is inserted into needle eye.



i) Thimble

It is used to protect the middle finger during hand sewing. These are available in different sizes and hence we can try them on size before buying.



j) Loop turner

This tool is having a hook at one end and is used to turn tubing to the right side.



k) Safety Pins

Safety pins are used to hold layers of fabric together. Curved safety pins are useful in quilting and patch work.



l) Magnetic pin cushion

This provides a handy and safe place to store straight pins.



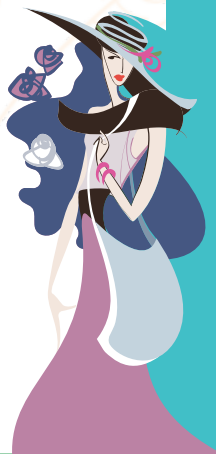
m) Pin cushions

There are many kinds of pin cushions available. This one keeps pins accessible which we can worn on the wrist.



n) Needles

- * **Sewing needles (sizes 1-12)** - This is for general sewing use medium-length needles, shorter one for seams.



- * **Tapestry needles (size 1-8)** - these needles are heavy and blunt and are used mainly for tapestry work.



- * **Bodkins** - these are used to thread ribbon, cord, or elastic through casings.



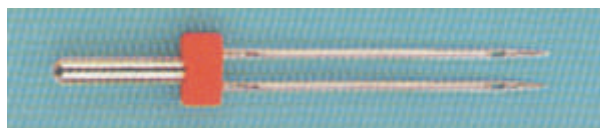
- * **Machine needles** - these are all available in various sizes and we have to see that it is matched to the fabric.



- * **Twin needles** - it is used to sew narrow, parallel lines, or to make pin tucks.



- * **Twin needles for stretch fabrics** - a special twin needle is used for stretch fabrics, especially for jersey.



Others - There are threads, bands, and buttons to suit every type of fabric. Choosing the right ones make sewing easier

Questions

1. Give some tools used for clothing constructions?
2. Give two uses of pinking shears?
3. Give the uses of tracing wheel?

SUMMARY

Different sewing aids available and its uses are explained in this chapter. The sewing aids increase the effectiveness of sewing. Right tools help to make the sewing more successful and enjoyable.

