

Synthetic Fibres and Plastics

Skill Based Questions

Q.1. Subjective questions:

1. Shyam was given a plastic container and a metal container to store food. Which one of the following will be preferred by him to store food. Justify your answer?

Ans.
.....
.....

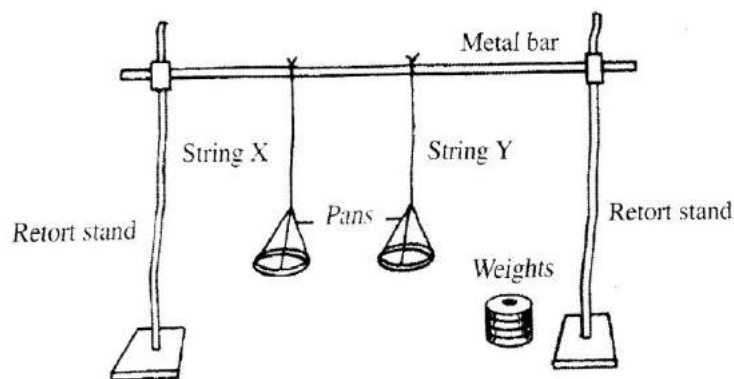
2. What are the various threats posed to health and environment by use of plastics in daily life?

Ans.
.....
.....

3. (a) Is it possible to live without plastics? Try to analyse the problems associated with its use.
(b) Find out the ways that would balance both the usefulness and the problems of plastics.

Ans.
.....
.....

4. Shyam performed an experiment to find out the Strength of two strings X and Y, by adding equal weights to both of them. He found that string Y broke first.



(a) Identify which material - cotton or nylon - each string is made of.

(i) String X - _____ (ii) String Y - _____

(b) Which string is more suitable for making a fishing line. Give reason for your answer.

Ans.
.....
.....

5. List various activities related to conservation of environment you have observed in your city/ surroundings. Complete the following table by listing the maximum no. of such activities you have observed and classify them under the correct headings. The first one has been done for you.

S. No.	Reduce	Recycle	Reuse
1.	Use of poly bags	Plastic Bottles	Giving old cloths to poor people
2.			
3.			
4.			
5.			
6.			

CONCLUDING QUESTION:

What, according to you, can these activities lead to?

.....
.....
.....