

## 2. Transport and Communications

### Exercise

#### 1 A. Question

Fill in the blanks:

The Transcontinental railway links ..... With Vladivostok.

#### Answer

the transcontinental railway links Leningrad on Baltic coast of Russia with Vladivostok. It is also known as Trans-Siberian railway line. It crosses many big commercial cities of world.

#### 1 B. Question

Fill in the blanks:

..... are the cheapest means of transport.

#### Answer

the railways are the cheapest means of transport. Railways is the cheapest and safest mode of transport for both humans and goods. In present time railway is widespread and mostly used transport system in the whole world.

#### 1 C. Question

Fill in the blanks:

Buckingham canal carried goods from Nellore to .....

#### Answer

The Buckingham canal is 796-kilometer long freshwater navigation canal, running parallel to the Coromandel coast. Buckingham canal carried goods from Nellore to Marakkanam.

#### 2 A. Question

Choose the correct answer:

..... is a major port.

A. Puducherry

B. Chennai

C. Cuddalore

**Answer**

India is bounded by large coastline of 6100 km. it consists of major ports like Kolkata, Paradip, Vishakhapatnam, Chennai, Tuticorin, Cochin, Mangalore, Mumbai, Kandla. Chennai is a major port.

**2 B. Question**

Choose the correct answer:

Pipelines are used to carry..... .

A. Coal

B. Oil

C. Wood

**Answer**

pipelines are privately owned by oil companies and also owned by the government also. It is the the cheapest source of transportation for liquid or gaseous products. pipelines are used to transfer commodities like oil and natural gas.

**2 C. Question**

Choose the correct answer:

Telegraph was invented in the year ..... .

A. 1844

B. 1855

C. 1866

**Answer**

the telegraph was invented in the year 1844. It was invented by Samuel Morse in 1844. It revolutionized the industry of long-distance communication.

**3. Question**

Match the following:

1. Brahmaputra	North America
2. Rhine	Transcontinental
3. Alaskan Highway	Major port
4. Visakhapatnam	Inland waterways
5. TAPS	Germany

### **Answer**

1. Brahmaputra - inland waterways

India has an extensive network of inland waterways in the form of rivers, canals, backwaters and creeks. Inland waterways are used for transport, the government is developing National Waterways.

2. Rhine - Germany

The Rhine is a European river begins in Swiss Alps. It passes through many European countries like- Germany, Switzerland, etc. it provides an important waterway for the transportation of coal in many European countries.

3. Alaskan highway – transcontinental

Alaska highway was constructed during world war II for the purpose of connecting USA and Canada. It is a network of roads also known as Pan American highway.

4. Vishakhapatnam - major ports

Vishakhapatnam is located on the east coast of India in Orissa state. It is a major port, from here major export activities carried out. Shipbuilding industry is also developing here.

5. TAPS - North America

Trans- Alaskan pipeline system runs between Texas to New Jersey in North America. TAPS is one of the world's largest pipeline systems.

#### **4 A. Question**

Answer in two or three sentences:

How are roads classified?

#### **Answer**

roads can be classified as:

- transcontinental highways,
- national highways
- local roads

#### **4 B. Question**

Answer in two or three sentences:

Write a note on Indian Railways.

#### **Answer**

Indian railways are the second largest in Asia and the fourth largest in the world. Indian railway employs the largest workforce in the world. It has the largest number of connectivity in the plains of the Gangetic region of U.P. Bihar and West Bengal.

#### **4 C. Question**

Answer in two or three sentences:

Name the note on mass communication.

#### **Answer**

mass communication means all those media designed to reach a large audience. It can be divided into two parts: the print media and the electronic media. Now satellites are playing an important role in digital communication.

#### **5. Question**

Write a detailed answer:

The development of transport and communication is important for the development of a country – Discuss.

#### **Answer**

- The development of transport and communication helps to increase the mobility of people.

- It fosters the easy and fast movement of goods and transfer of ideas.
- It also increases the trade and economy of that region.
- It helps in the better employment of a large sector of society.
- It helps in increasing the social and international connection of a country to the foreign countries and helps in making a better tie.

## **Formative Assessment**

### **1. Question**

List the seaports of India along the coast from north to south.

#### **Answer**

List the seaports of India along the coast from north to south are :

- Kandla
- Kolkata
- Paradip
- Mumbai
- Vishakhapatnam
- Mormugaon
- Mangalore
- Tuticorin
- Kochi

### **2 A. Question**

Project work:

Write any two important goods handled by the following seaports.

a. Mumbai b. Visakhapatnam c. Goa d. Cochin e. Kolkata

#### **Answer**

a. Mumbai – crude oil and petroleum products. Chemicals are also handled at this port.

b. Vishakhapatnam- iron and manganese ore, mineral oils and coal are handled mainly here.

c. Goa – Iron ore, cotton and coconut.

d. cochin- tea, coffee, mineral ore, spices.

e. Kolkata - jute, automobiles, leather are mainly handled

## 2 B. Question

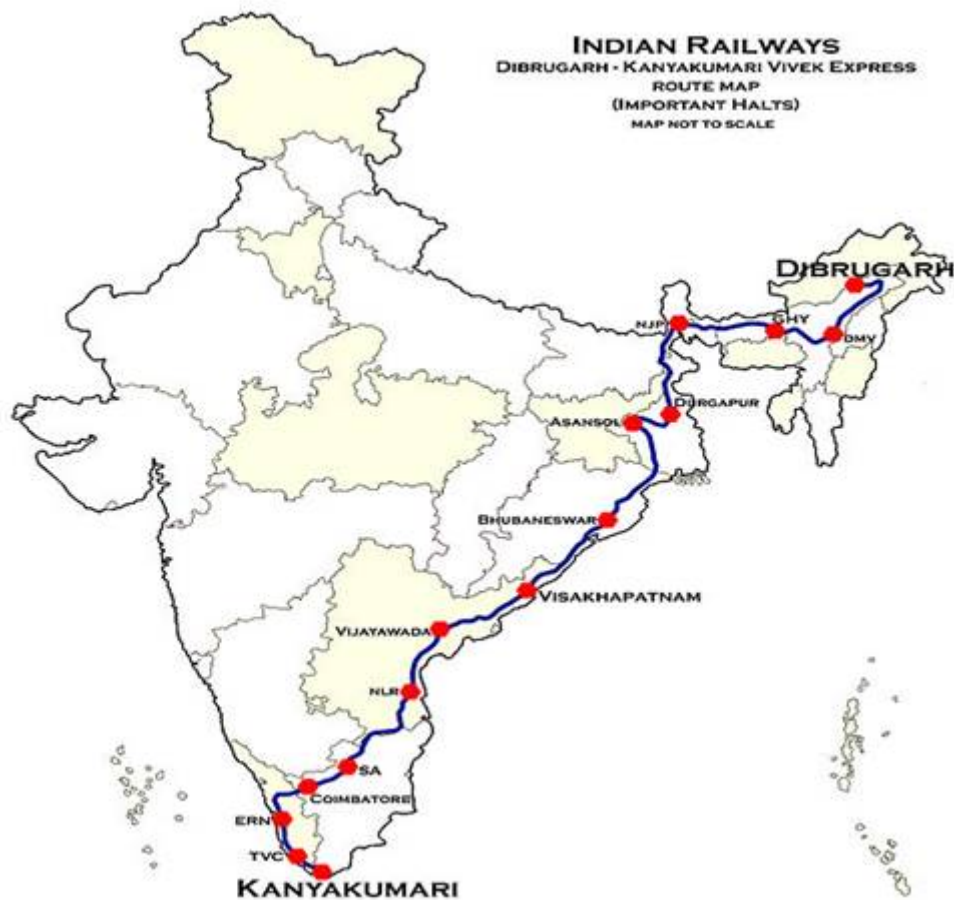
Project work:

Which is the longest railway line in India and name the cities which it connects?

### Answer

Dibrugarh- Kanyakumari Vivek express is the longest route on Indian railways. It is the 16<sup>th</sup> longest railway line in the world. It covers a distance of 4,262 km and traverses in seven states in India namely Assam, Nagaland, Bihar, West Bengal, Odisha, Andhra Pradesh, Kerala and Tamil Nadu.

Cities that are connected by this line are: Dimapur, Guwahati, Siliguri, Malda, Durgapur, Asansol, Bhubaneswar, Brahmapur, Vizianagaram, Visakhapatnam, Rajahmundry, Eluru, Vijayawada, Nellore, Vellore, Salem, Erode, Coimbatore, Palakkad, Thrissur, Ernakulum, Kottayam, Chengannur, Kollam, Thiruvananthapuram and Nagercoil.



Dibrugarh-Kanyakumari railway

## 2 C. Question

Project work:

Write a very short note Trans – Alaskan pipeline system.

### **Answer**

Trans- Alaskan pipeline system runs between Texas to New Jersey in North America. TAPS is one of the world's largest pipeline systems. It is made into 800 miles (1,287 km) of the pipeline with the diameter of 48 inches (122 cm) that conveys oil from Prudhoe Bay, to Valdez, Alaska.

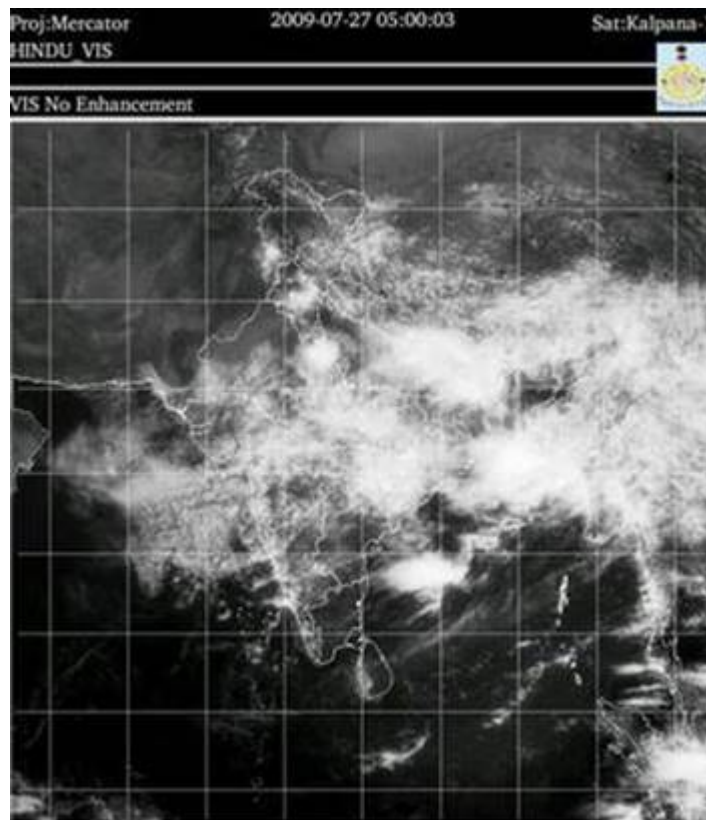
The pipeline was built between 1974 and 1977 after the 1973 oil crisis caused a sharp rise in oil prices in the United States.

### **2 D. Question**

Project work:

Collect an INSAT picture from the local news paper. Can you understand weather from the photograph.

### **Answer**



source: the Hindu

It is a satellite image of a weather forecast done in 2016 by the Indian meteorological department on the onset of monsoon. White colour in the INSAT image shows the clouds which denote the monsoon hanging over the cities and its progress.

### **2 E. Question**

Project work:

Why is air transport is preferred by the people of North East India.

**Answer**

Air transport is more popular in North-Eastern India because

- (i) Big and wide rivers are present there, due to which rail or road bridges over them are difficult and costly to construct. These rivers also get flooded frequently, due to which surface communication links are damaged.
- (ii) This area has dissected relief features, preventing durable construction of rail and road links.
- (iii) Dense forests in this region create many difficulties in construction of railway lines and roads.