

This Question Paper contains 4 Printed Pages.

**New Pattern**

**20E(A)**

**GENERAL SCIENCE, Paper - II**

*(Biological Science)*

*(English version)*

**Parts A and B**

**Time : 2 hrs. 45 min.]**

**[Maximum Marks : 40**

**Instructions :**

1. **Part-'A'** consist of three Sections. Answer the questions under **Part-'A'** on a separate answer book.
2. Write the answers to the questions under **Part 'B'** on the question paper itself and attach to the answer book of **Part 'A'**.
3. 15 minutes is allotted to read the question paper. 2.30 hours is allocated to write answers.

**Part - A**

**Time : 2 hrs.**

**Marks : 30**

**SECTION - I**

**NOTE :** (i) Answer the following questions.

**4×1=4**

(ii) Each question carries **ONE** mark.

1. Which disease occurs in child when there is an immediate second pregnancy or repeated child births in a mother ?
2. What happens if blood platelets are absent in blood ?
3. What questions you ask the doctor, who visited your school on World AIDS day ?
4. Suggest any two practices suitable to farmer with less water resources.

**20E(A)/New**

**NA**

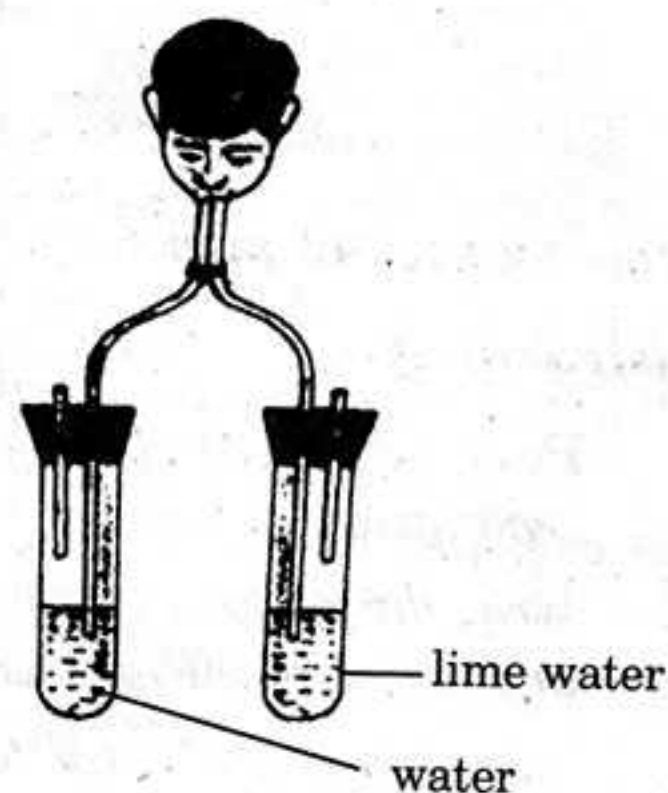
**P.T.O.**

**SECTION - II**

- NOTE :** (i) Answer the following questions.  
 (ii) Each question carries **TWO** marks.

5×2=10

5. (a) Which gas turns lime water milky in this experiment ?  
 (b) Which gas do you think might be present in less quantities in the air we breath out as compared to air around us ?



6. After reading the functions of lymphatic system, what precautions you would suggest to your elders about Edema ?  
 7. What habits you would like to follow for the proper functioning of kidneys ?  
 8. It is believed that the Diencephalon in fore-brain and vagus nerve (10th cranial nerve) plays an important role in carrying hunger signals to the brain. Hunger pangs continue upto 30-45 minutes. Increase in ghrelin levels results in sensation of hunger and motivation to consume food.

*Read above content and prepare any two questions.*

9. Explain the role of green house gases in Global Warming.

**SECTION - III**

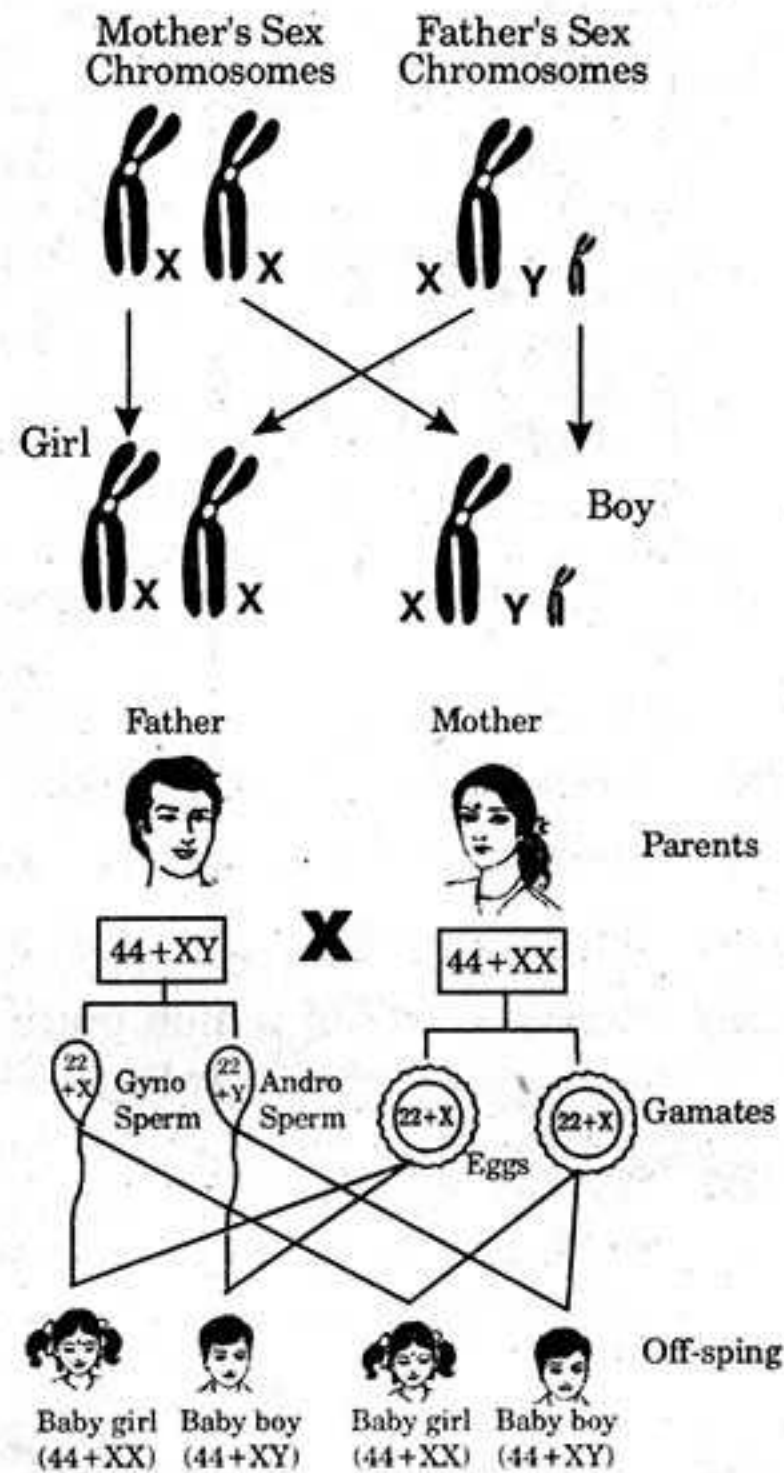
- NOTE :** (i) Answer the following questions.  
 (ii) Each question carries **FOUR** marks.  
 (iii) There is internal choice for each question.

4×4=16

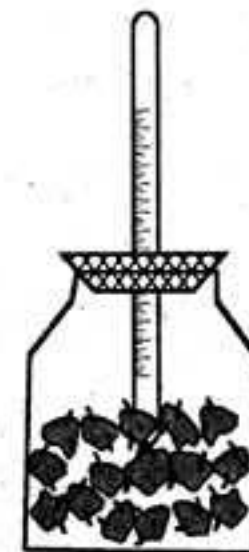
10. (A) During Photosynthesis, several events occurs in the Chloroplast. Explain the light dependent reactions.

OR

- (B) (i) What does the given flow chart indicate?
- (ii) What will happen if the sperm containing 'X' chromosomes fertilises the ovum?
- (iii) Who decides the sex of the baby - Mother or Father?
- (iv) How many pairs of chromosomes are present in off-spring?



11. (A) (i) What change did you observe in the thermometer in the given experiment?
- (ii) Where does the heat come from?
- (iii) What result you will get, if you perform this experiment with dry seeds?
- (iv) What are the apparatus used in this experiment?



OR

- (B) (i) Explain the procedure followed in the experiment conducted to understand the action of saliva on starch.
- (ii) What apparatus and chemicals are used to do this experiment?



12. (A) Analyse the following information and answer the questions.

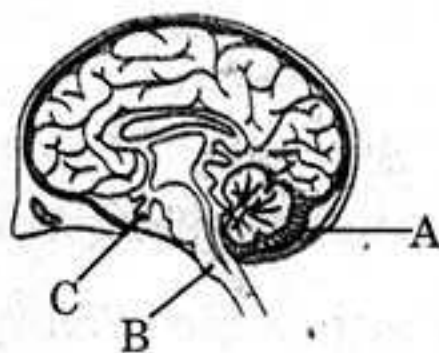
<i>Alkaloid</i>	<i>Part of the plant</i>	<i>Uses</i>
Quinine	Bark	Anti-malarial drug
Pyrethroids	Leaves	Insecticide
Reserpine	Roots	Medicine for snake bite
Caffeine	Seeds	Central nervous system stimulant
Nimbin	Seeds, Barks, Leaves	Antiseptic

- (i) Name the alkaloid which is used to cure malaria.
- (ii) Name the alkaloids used as insecticides.
- (iii) Which system is stimulated by the alkaloid caffeine?
- (iv) Which parts of which plant is used as medicine for snake bite?

**OR**

(B) Should we use pesticides as they prevent our crop and food from pests or should we think of alternatives? Write your view about this issue and give sound reason for your answer.

13. (A)



- (i) This diagram belongs to which system of the body?
- (ii) Name the parts A and B.
- (iii) The part 'C' is endocrinal gland. This is called master gland. What is the name of this gland?
- (iv) Which part in this diagram is useful to solve problems and puzzles?

**OR**

- (B) (i) Draw a neat labelled diagram of L.S. of flower.
- (ii) What are the sexual parts in the flower?

20E(B)

**GENERAL SCIENCE, Paper-II**

*(Biological Science)*

*(English version)*

**Parts A and B**

**Time : 2 hrs. 45 min.]**

**[Maximum Marks : 40**

**Instructions :**

1. Answer **all** the questions.
2. Each question carries  $\frac{1}{2}$  mark.
3. Marks will not be awarded in any case of over-writing, rewritten or erased answers.
4. Write the **CAPITAL LETTER** (A, B, C, D) showing the correct answer for the following questions in the brackets provided against them.

**Part - B**

**Time : 30 minutes**

**Marks : 10**

**SECTION - IV**

- NOTE :**
- (i) Answer all the questions.
  - (ii) Each question carries  $\frac{1}{2}$  mark.
  - (iii) Answer should be written on question paper itself.

Put correct answer in the brackets given below.

$20 \times \frac{1}{2} = 10$  marks

14. Pepsin : Proteins :: Lipase : ..... [     ]  
(A) Carbohydrates (B) Fats  
(C) Vitamins (D) Sucrose
15.  $C_6H_{12}O_6 + 6O_2 \longrightarrow \dots\dots\dots + 6H_2O + \text{energy}$  [     ]  
(A)  $6CO_2$  (B)  $C_6H_{12}O_6$   
(C)  $6O_2$  (D)  $12CO_2$
16. 1. Chlorophyll is similar to the haemoglobin of blood. [     ]  
2. Haemoglobin has iron while chlorophyll has magnesium.  
(A) 1 is correct, 2 is wrong. (B) 1 is wrong, 2 is correct.  
(C) 1, 2 both are correct. (D) 1, 2 both are wrong.



17. The percentage of Carbon di oxide in exhaled air is ..... [     ]

- (A) 44 (B) 4.4  
(C) 0.4 (D) 0.04

18. The given blood vessel carries blood from body parts to heart.  
Name the blood vessel. [     ]



- (A) Artery (B) Capillary  
(C) Vein (D) Muscular fibre

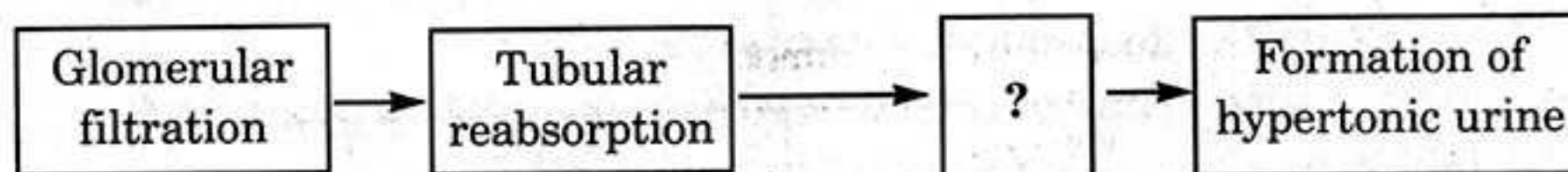
19. Study the following pairs. [     ]

- (a) Stethoscope - Rene Laennec  
(b) Blood pressure - Thermometer  
(c) Amoeba - Brownian movement

Identify the mis-matched pair.

- (A) a (B) b  
(C) c (D) None

20. Fill the flow chart of urine formation. [     ]



- (A) Tubular secretion. (B) Tubular filtration.  
(C) Tubular excretion. (D) Urine formation.

21. I am a plant. My seeds are used for production of bio-fuel. Who am I? [     ]

- (A) Rubber plant (B) Neem plant  
(C) Cactus plant (D) Jatropha plant

22. The excretory organs in phylum Mollusca is ..... [     ]

- (A) Renette cells. (B) Green glands.  
(C) Meta nephridia. (D) Kidneys.

23. Leaf movement in mimosa helps to ..... [ ]  
 (A) reduce photosynthesis. (B) regulate it's growth.  
 (C) releasing phytohormones. (D) protect from grazers.

24. Name the part 'X' in the given diagram. [ ]

- (A) Acrosome  
 (B) Head  
 (C) Nucleus  
 (D) Tail



25. In which organisms, budding occurs ? [ ]  
 (A) Yeast (B) Paramecium  
 (C) Earthworm (D) Amoeba

26. When your stomach is full and there is no need of food anymore, a hormone is secreted that suppresses hunger. Name the hormone. [ ]  
 (A) Ghrelin (B) Vasopressin  
 (C) Leptin (D) Insulin

27. Find out the missing thing from the table. [ ]

Type of pyramid	Base
Pyramid of number	Number of organism
.....?.....	Flow of energy

- (A) Ecological pyramid. (B) Pyramid of energy.  
 (C) Pyramid of bio-mass. (D) Giza pyramid.

28. Match the following. [ ]

1. DNA  
 2. Mendel  
 3. Darwin

- a. Father of genetics.  
 b. Natural selection.  
 c. Double helix.

- (A) 1-a, 2-b, 3-c  
 (C) 1-c, 2-b, 3-a

- (B) 1-b, 2-c, 3-a  
 (D) 1-c, 2-a, 3-b

29. Which of the following statements is NOT true about the Mendel's selection of garden pea for his experiment ? [     ]

- (A) Well defined characters.
- (B) Bisexual flowers.
- (C) Predominantly self fertilisation.
- (D) Cheap in cost.

30. The cruel campaign against which bird is initiated in 1958 in China ? [     ]

- (A) Parrots
- (B) Sparrows
- (C) Crows
- (D) Vultures

31. This symbol denotes that ..... [     ]



- (A) UNDP
- (B) Percolation pits
- (C) Sustainable development
- (D) Recycling logo

32. Ban all pesticides, this means that ..... [     ]

- (A) Promote eco-friendly agricultural practices.
- (B) Prevention of pesticides.
- (C) Control on usage of pesticides.
- (D) Stop bio-chemical factories.

33. Which of the following statement is true ? [     ]

- (a) Development is necessary.
- (b) Development should be eco-friendly.

- (A) 'a' true, 'b' false
- (B) 'a' false, 'b' true
- (C) both a, b are false.
- (D) both a, b are true.



# AP Board Class 10 Science Paper II 2017 Question Paper with Solutions

## Part-A

### Section- I

4 X 1= 4

**1. Which is the disease seen in the child, when there is an immediate second pregnancy or repeated childbirths in a mother?**

**(Question is as per the Question Paper)**

**Answer:** Preeclampsia, is a pregnancy complication characterised by high blood pressure and could also result in possible organ failure in the mother. If someone has suffered from preeclampsia during their first pregnancy, they are more liable to face it in their second pregnancy, as well. The condition, normally occurs after 20 weeks of pregnancy in women but it also occurs postpartum in some cases. If left untreated, preeclampsia could cause a liver or kidney failure and other potential cardiovascular problems. This could also result in a condition known as eclampsia, which can cause seizures in the mother. The more severe outcome was a stroke, which could lead to permanent brain damage or even maternal death. In babies, the condition could prevent them from receiving enough blood, thus giving the baby less oxygen and food. This leads to slower development in the womb, a low birth weight, premature birth, and stillbirth as well.

**2. What happens if blood platelets are absent in blood?**

**Answer:** The important function of a blood platelet is the coagulation of blood. So if the blood platelet is absent in blood, then the injured blood vessels will not stop bleeding, thus resulting in the death of the victim.

**3. What questions would you ask a doctor who comes to your school on World AIDS Day?**

**Answer:** Below are some questions to ask a doctor who visits your school during World AIDS Day:

- What is AIDS? Which is the virus that causes AIDS?
- How does it affect my body?
- How do I protect myself from AIDS?
- What are the factors contributing to the spread of AIDS?
- What are the precautions to take?
- What treatment options are there?
- How can I stay healthy?
- How do I stop the disease from spreading to others?

**4. Suggest any two practices suitable for a farmer with less water resources?**

**Answer:** Farmers with fewer water resources were motivated to use irrigation techniques such as drip irrigation, sprinklers etc.(also collectively called micro-irrigation techniques). Construction of soak pits to tap rainwater optimally, was also carried out as community efforts. These soak pits help in

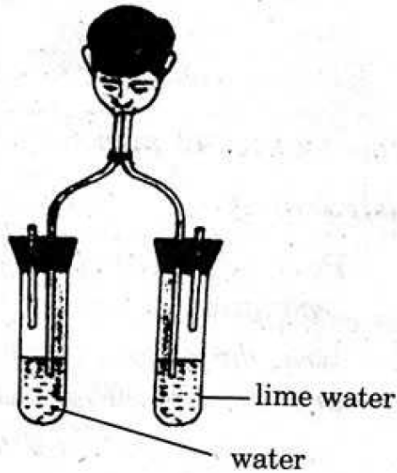
---

recharging dried up bore wells. Dykes or barriers, nearly 30 cm thick of brick-cement or stone cement barrier, extending down to the compact bedrock, with mud or clay fillings were as well, built-in underground streams to tap groundwater, optimally.

## Section-II

5 X 2= 10

5.



- a. Which gas turns the lime water milky in this experiment?
- b. Which gas do you think might be present in lesser quantities in the air that we breathe out, as compared to the surrounding air?

**Answer:** (a) When you breathe into a test tube with lime water using a straw, you will see that the carbon dioxide ( $\text{CO}_2$ ) gas passed through it turns it to milky.

(b) Oxygen might be present in lesser quantities in the air we breathe out as compared to the surrounding air.

**6. After reading about the functions of lymphatic system, what precautions would you suggest to your elders as a protection against Edema?**

**Answer:** While Edema is said to be incurable, there are certain precautions to follow which could help to reduce the swelling and pain. Complex decongestive therapy (CDT) begins with an intensive therapy phase, during which the patient receives daily treatment and training. Now the maintenance phase follows, when the patient is encouraged to take charge of their own care using techniques that have been taught including recovery exercises, skin care, lymphatic drainage manual and multilayer lymphedema bandage.

**7. What habits would you like to follow for the proper functioning of Kidneys?**

**Answer:** Here are some habits that you have to follow for the proper functioning of Kidneys:

- Reduce alcohol consumption and drink a lot of water
- Quit smoking

- Stop living a sedentary life and exercise frequently
- Avoid food that are high in sodium and salt
- Keep track of your blood pressure
- Using artificial sweeteners are more likely to raise the risk of kidney decline
- Avoid eating a lot of red meat
- Sleep properly

**8. It is believed that the Diencephalon in fore-brain and vagus nerve (10th cranial nerve) plays an important role in carrying hunger signals to the brain. Hunger pangs continue up to 30-45 minutes. Increase in ghrelin levels results in sensations of hunger and motivation to consume food.**

**Read the above content and prepare any two questions.**

**Answer:** From the content given above, please see the questions that can be framed:

- What is the function of Diencephalon in fore-brain and vagus nerve (10th cranial nerve)?
- What causes sensations of hunger and motivation to consume food?
- How long do hunger pangs continue?

**9. Explain the role of green house gases in Global Warming?**

**Answer:** Deforestation destroys wildlife habitats and increases soil erosion, while also releasing greenhouse gases into the atmosphere, thus contributing to global warming. Deforestation accounts for about 15% of the world's greenhouse gas emissions. It also harms the people who rely on forests for their survival, hunting and gathering, harvesting forest products, or using the timber for firewood.

### **Section-III**

**4 X 4= 16**

**10. (A) During photosynthesis, several events occur in the Chloroplast. Explain the light dependent reactions.**

**Answer: 1. Light dependent reaction (Photochemical phase)**

In this reaction, light plays a key role. A series of chemical reactions take place in a very quick succession, initiated by light and therefore, the phase is technically called the photochemical phase or light dependent reaction. The light reaction takes place in chlorophyll containing thylakoids called grana of chloroplasts. Several steps occur in the light dependent reaction:

Step-I : The chlorophyll on exposure to light energy becomes activated by absorbing photons. (Photon is the smallest unit of light energy)

Step-II: The energy is used in splitting the water molecule into two component ions named hydrogen ( $H^+$ ), hydroxyl ion ( $OH^-$ ).

$H_2O \rightarrow H^+ + OH^-$  reaction is known as photolysis, which means splitting by light (photo means light, lysis means breaking). This was discovered by Hill and so was called Hill's reaction.

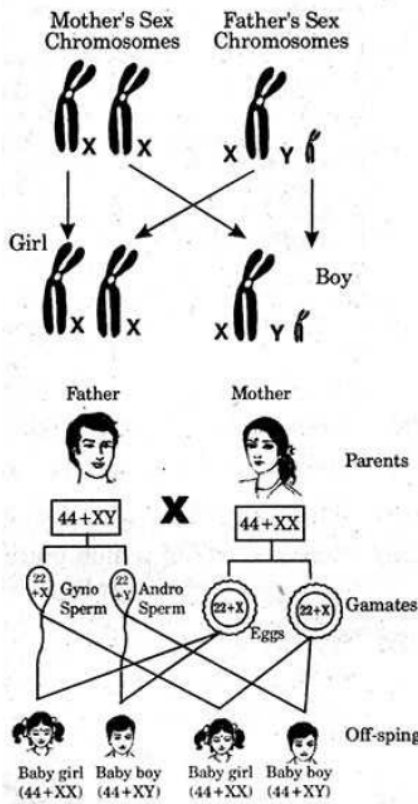
Step-III: The highly reactive ions of water undergo quick change as described below.

$OH^-$  ions after undergoing a series of steps produce water ( $H_2O$ ) and Oxygen ( $O_2$ ). Water may be used by the plant inside, but  $O_2$  is usually released into the atmosphere.  $H^+$  ions undergo a series of changes in dark reaction. compounds that can trap energy like ATP (Adenosine Tri phosphate) and NADPH (Nicotinamide Adenosine Dinucleotide Hydrogen Phosphate) are formed at the end of the light reaction.



Or

(B)



(i) What does the given flow chart indicate?

(ii) What will happen if the sperm containing 'X' chromosomes fertilises the ovum?

(iii) Who decides the sex of the baby-mother or father?

(iv) How many pairs of chromosomes are present in off-spring?

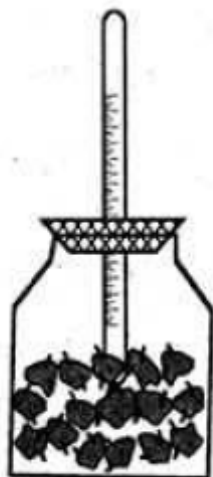
**Answer:** (i) The flow chart in the question indicates sex determination in human beings

(ii) If the sperm carries X chromosome and fertilises the ovum (X chromosome). Then, the baby will be a girl and will have XX condition.

(iii) Father decides the sex of the baby. All the gametes (ova) produced by a woman have only X chromosomes. The gametes (sperm) produced by a man are of two types, one with X chromosome and other Y chromosome. Depending on the chromosome carried by the sperm (X or Y), which fertilises the ovum (X chromosome), the sex of the baby will be determined.

(iv) A human being has 23 pairs of chromosomes

11(A)



- (i) What change did you observe in the thermometer in the given experiment?
- (ii) Where does the heat come from?
- (iii) What result will you get, if you perform this experiment with dry seeds?
- (iv) What are the apparatus used in this experiment?

**Answer:** (i) Heat is evolved during the experiment thus increasing temperature in the thermometer placed in the flask

(ii) Heat is produced by the germinating seeds

(iii) If you perform this experiment with dry seeds there will be no change in the temperature

(iv) The apparatus used in the experiment include a bottle / beaker, thermometer and wet sprouts

Or

**(B) (i) Explain the procedure followed in the experiment conducted to understand the action of saliva on starch**

**(ii) What apparatus and chemicals are used to do this experiment?**

**Answer:** (i) Take a test tube half filled with water and add a pinch of flour to it. Shake the test tube well till the flour gets mixed. Take a few drops of this in a watch glass and test for the presence of starch by putting a drop of diluted tincture iodine in it. A blue-black colour confirms the presence of starch. Now again dissolve a pinch of flour into half filled water in a test tube.

Now divide the mixture into two equal halves by transferring it to another test tube. Note that both the test tubes have the same amount of solution. Add a teaspoon of saliva to one of the test tubes and mark it. Do not add anything in the other test tube. After 45 minutes, add a drop of dilute Tincture Iodine solution to test tubes containing the solution.

(ii) The apparatus and chemicals used in the experiment includes two test tube, flour, watch glass , tincture iodine, saliva

**12 (A) Analyse the following information and answer the questions:**

Alkaloid	Part of tee plants	Uses
----------	--------------------	------

Quinine	Bark	Anti-Malarial Drug
Pyrethroids	Leaves	Insecticide
Reserpine	Roots	Medicine for snake bite
Caffeine	Seeds	Central nervous system stimulant
Nimbin	Seeds, Barks, Leaves	Antiseptic

- Name the alkaloid which is used to cure malaria
- Name the alkaloids used as insecticides
- Which system is stimulated by the alkaloid caffeine?
- Which parts of which plants are used as medicine for snake bite?

**Answer:** (A) (a) Quinine is the alkaloid used to cure malaria  
 (b) Pyrethroids are the alkaloids used as insecticides  
 (c) Caffeine is used as the Central nervous system stimulant  
 (d) Roots of the reserpine plant is used as medicine for snake bite

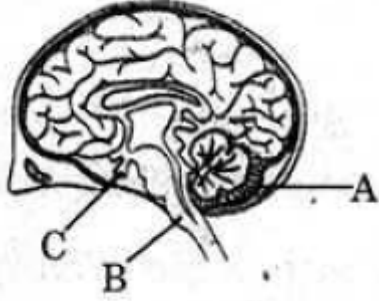
Or

**(B) Should we use pesticides as they prevent our crop and food from pests or should we think of alternatives? Write your view about this issue and give sound reason for your answer?**

**Answer: (B)** It is better to use some alternative other than pesticides because pesticides are often indiscriminate in their action and a vast number of other animals may be destroyed. Some of these may be predators that naturally feed on these pests, others may be the prey for other animals. This causes unpredictable changes in food chains and upsetting the balance within the ecosystem. A further danger is that some have a cumulative effect. Pesticides vary in their length of "life" as toxic substances. Some pesticides and herbicides are degradable. They are broken down into harmless substances in a comparatively short time, usually a year. Others are non-degradable, and include those which contain mercury, arsenic or lead. These non-degradable pesticides are potentially dangerous as they accumulate in the bodies of animals and pass right through the food web. Being further concentrated at each step until animals at the top of the pyramid may receive enough to do considerable harm. The process of entry of pollutants into a food chain is known as Bioaccumulation, whereas the tendency of pollutants to concentrate as they move from one trophic level to the next is known as Biomagnification. A long term solution to this problem is to find other effective methods of controlling pests, which have far less harmful effects and are based on sound biological principles.

**13. (A)**





- (i) This diagram belongs to which system of the body?
- (ii) Name the parts A and B
- (iii) The part C is endocranial gland. This is called master gland. What is the name of the gland?
- (iv) Which part in this diagram is useful to solve problems and puzzles?

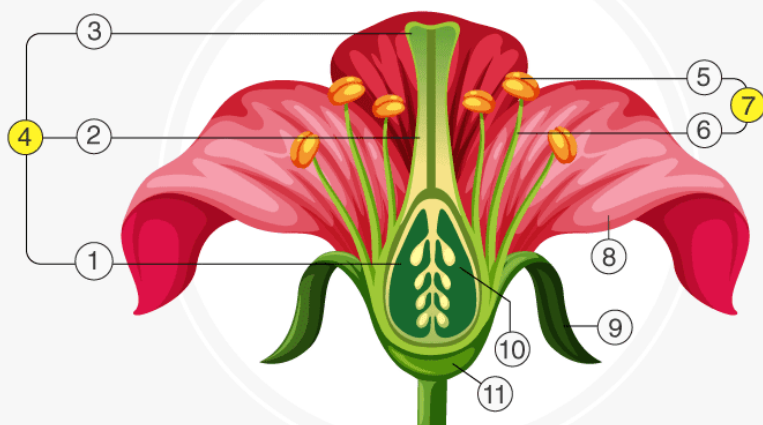
**Answer:** (i) The diagram belongs to the Central Nervous System(CNS), which includes the brain and spinal cord. It also coordinates all neural functions.  
 (ii) The parts A and B are Cerebellum and Medulla, respectively  
 (iii) The name of the part C is Pituitary gland  
 (iv) Cerebrum is useful to solve problems and puzzles

**Or**

- 13(B) (i) Draw a neat labelled diagram of L.S. of flower
- (ii) What are the sexual parts in the flower?

**Answer:** (B) (i)

## PARTS OF A FLOWER



- |          |            |               |          |
|----------|------------|---------------|----------|
| 1 Ovary  | 2 Style    | 3 Stigma      | 4 Pistil |
| 5 Anther | 6 Filament | 7 Stamen      | 8 Petal  |
| 9 Sepal  | 10 Ovule   | 11 Receptacle |          |

(ii) The sexual parts of a flower are the stamen, the male reproductive organ and pistil, the innermost part and the female reproductive organ. The reproductive parts of a flower consist of the following:

- **Stamen:** This is the male reproductive organ and is also known as Androecium. It consists of two parts namely: anther and filaments.
  1. The anther is a yellowish, sac-like structure, involved in producing and storing the pollens.
  2. The filament is a slender, threadlike object, which functions by supporting the anther.
- **Pistil:** This is the innermost part and the female reproductive organ of a flower which comprises three parts -stigma, style and ovary. This is collectively known as the pistil.
  1. Stigma: It is the topmost part or receptive tip of carpels in the gynoecium of a flower.
  2. Style: It is the long tube-like slender stalk that connects stigma and the ovary.
  3. Ovary: It is the ductless reproductive gland that holds a lot of ovules. It is the part of the plant where the seed formation takes place.

### Part-B

#### Section -IV

20 X ½ = 10

14. Pepsin: Proteins :: Lipase : \_\_\_\_\_

- A. Carbohydrates
- B. Fats
- C. Vitamins
- D. Sucrose

**Answer:** (B) Fats

**15.  $C_6H_{12}O_6 + 6O_2 \rightarrow$  \_\_\_\_\_  $+ 6H_2O + \text{energy}$**

- A.  $6CO_2$
- B.  $C_6H_{12}O_6$
- C.  $6O_2$
- D.  $12CO_2$

**Answer:** (A)  $6CO_2$

**16. (1) Chlorophyll is similar to the haemoglobin of the blood  
(2) Haemoglobin has iron while chlorophyll has magnesium**

- A. 1 is correct, 2 is wrong
- B. 1 is wrong, 2 is correct
- C. 1, 2, both are correct
- D. 1, 2, both are wrong

**Answer:** (C) 1, 2, both are correct

**17. The percentage of carbon dioxide in exhaled air is \_\_\_\_\_**

- A. 44
- B. 4.4
- C. 0.4
- D. 0.04

**Answer:** (B) 4.4

**18. The given blood vessel carries blood from body parts to the heart. Name the blood vessel.**



- A. Artery
- B. Capillary
- C. Vein
- D. Muscular Fibre

**Answer:** (C) Vein

**19. Study the following pairs:**



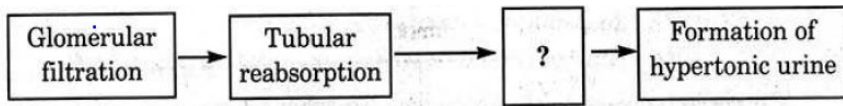
- (a) Stethoscope- Rene Laennec
- (b) Blood Pressure- Thermometer
- (c) Amoeba- Brownian Movement

Identify the mismatched pair:

- A. a
- B. b
- C. c
- D. None

Answer: (B) b

20. Fill the flow chart of urine formation:



- A. Tubular secretion
- B. Tubular filtration
- C. Tubular excretion
- D. Urine formation

Answer: (A) Tubular secretion

21. I am a plant. My seeds are used for production of bio-fuel. Who am I?

- A. Rubber plant
- B. Neem plant
- C. Cactus plant
- D. Jatropha plant

Answer: (D) Jatropha plant

22. The excretory organs in phylum Mollusca is \_\_\_\_\_

- A. Renette cells
- B. Green glands
- C. Meta nephridia
- D. Kidneys

Answer: (C) Meta nephridia

23. Leaf movement in mimosa helps to \_\_\_\_\_

- A. reduce photosynthesis
- B. regulate its growth

- C. release phytohormones
- D. protect from grazers

**Answer:** (C) release phytohormones

**24. Name the part “X” in the given diagram:**



- A. Acrosome
- B. Head
- C. Nucleus
- D. Tail

**Answer:** (A) Acrosome

**25. In which organisms, do budding occur?**

- A. Yeast
- B. Paramoecium
- C. Earthworm
- D. Amoeba

**Answer:** (A) Yeast

**26. When your stomach is full and there is no need for food any more, a hormone is secreted that suppresses hunger. Name the hormone.**

- A. Ghrelin
- B. Vasopressin
- C. Leptin
- D. Insulin

**Answer:** (C) Leptin

**27. Find out the missing thing from the table:**

Type of Pyramid	Base
Pyramid of number	Number of organism
_____ ? _____	Flow of energy

- A. Ecological pyramid
- B. Pyramid of energy
- C. Pyramid of bio-mass
- D. Giza pyramid

**Answer:** (B) Pyramid of energy

**28. Match the following:**

1. DNA	a. Father of genetics
2. Mendel	b. Natural selection
3. Darwin	c. Double helix

- A. 1-a, 2-b, 3-c
- B. 1-b, 2-c, 3-a
- C. 1-c, 2-b, 3-a
- D. 1-c, 2-a, 3-b

**Answer:** (D) 1-c, 2-a, 3-b

**29. Which of the following statements is Not true about the Mendel's selection of garden pea for his experiment?**

- A. Well defined characters
- B. Bisexual flowers
- C. Predominantly self-fertilisation
- D. Cheap in cost

**Answer:** (D) Cheap in cost

**30. The cruel campaign against which bird is initiated in 1958 in China?**

- A. Parrots
- B. Sparrows
- C. Crows
- D. Vultures

**Answer:** (B) Sparrows

**31. This symbol denotes that \_\_\_\_\_**





- A. UNDP
- B. Percolation pits
- C. Sustainable development
- D. Recycling logo

**Answer:** (C) Sustainable development

**32. Ban all pesticides, this means \_\_\_\_\_**

- A. Promote eco-friendly agricultural practices
- B. Prevention of pesticides
- C. Control on usage of pesticides
- D. Stop biochemical factories

**Answer:** (B) Prevention of pesticides

**33. Which of the following statements is true?**

- (a) Development is necessary
- (b) Development should be Eco-friendly

- (A) 'a' true, 'b' false
- (B) 'a' false, 'b' true
- (C) both a and b are false
- (D) both a and b are true

**Answer:** (D) both a and b are true