

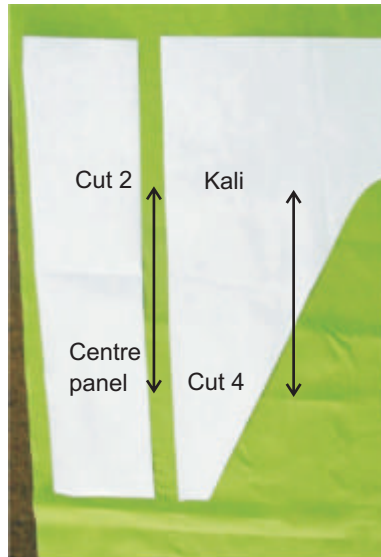


CHAPTER - 6

Construction of Salwar and Kameez / Kurti

6.1. Construction of Salwar

Trace the pattern according to marker and Cut out all pieces as shown in Fig. 6.1.1



Step 1: Stitch the centre-front of the kali or side panel. In centre-front, leave 2" for finishing of the casing. Finish the opening and then attach the left centre panel with the left kali, and the right centre panel with the right kali.

Again, repeat the same process to attach the back panel with the side seam panel, and join centre-front and centre-back with French seam as shown in Fig. 6.1.2a, 6.1.2b, 6.1.2c, 6.1.2d, 6.1.2e and 6.1.2f



Fig. 6.1.2



Fig. 6.1.2a

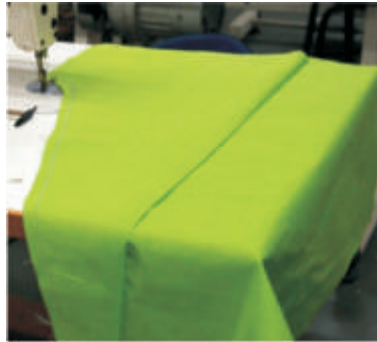


Fig. 6.1.2b



Fig. 6.1.2c



Fig. 6.1.2d



Fig. 6.1.2e



Fig. 6.1.2f

Similarly, attach the other leg, close and stitch the inseam as shown in Fig 6.1.3



Fig. 6.1.3

Step 2: Now, take two straps for the hem, with the right sides facing each other such that the seam allowances of all the four sides match together. Give a top stitch; finish the sides and the bottom of the hem strap as shown in Fig 6.1.4



Fig. 6.1.4

Step 3: Attach waist panel at centre-back with French seam.



Step 4: Now, close and stitch the centre-front with a French seam leaving the casing for the drawstring opening as shown in Fig 6.1.5 and Fig 6.1.5a



Fig. 6.1.5



Fig. 6.1.5a

Make a slit of approx. 1/8" and open the casing as shown in Fig 6.1.5b



Fig. 6.1.5b

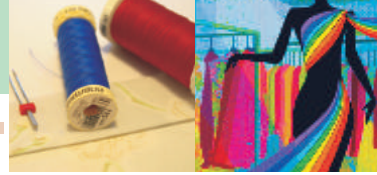
Fold the raw edge of the casing and give an edge stitch as shown in Fig. 6.1.5c and Fig. 6.1.5d.



Fig. 6.1.5c



Fig. 6.1.5d



Step 5: Now, fold at the waistline at a distance of 1 ½" and finish the waist band as shown in Fig.6.1.6

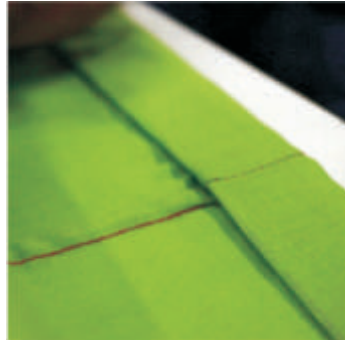


Fig. 6.1.6

Step 6: Then, make knife pleats, finishing the excess fabric, and attach them with the waist panel as shown in Fig. 6.1.7, Fig.6.1.7a, Fig.6.1.7b, and Fig. 6.1.7c



Fig. 6.1.7



Fig. 6.1.7a

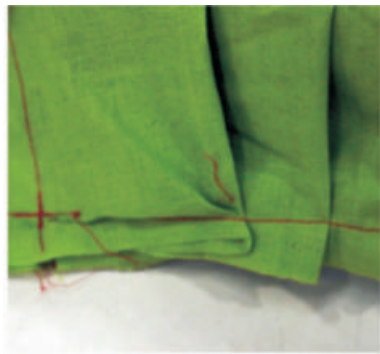


Fig. 6.1.7b



Fig. 6.1.7c



*Fig. 6.1.8
(Complete Salwar)*



6.2 Construction of a Kameez / Kurti

Trace the front and back patterns on-fold and cut out all the pieces as shown in Fig. 6.2.1, Fig. 6.2.1a and Fig. 6.2.1b.



Fig. 6.2.1



Fig. 6.2.1a



Fig. 6.2.1b

Step 1: Close all darts as described in Chapter 5, shown in Fig. 6.2.2



Fig. 6.2.2

Step 2: Shrink the extra amount of ease of the back shoulder by false gathering and attach the shoulders as shown in Fig.6.2.3



Fig. 6.2.3

Step 3: Close the side seams as shown in Fig 6.2.4

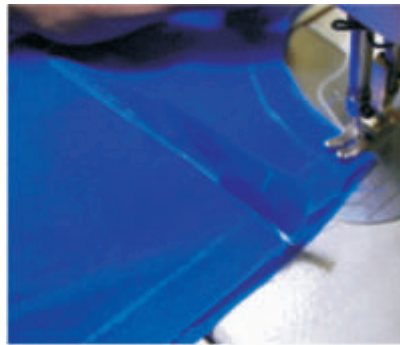


Fig. 6.2.4

Step 4: Finish neckline and armhole with a bias strip as described in Chapter 5 and also shown in Fig. 6.2.5, Fig.6.2.5a, Fig. 6.2.5b, Fig. 6.2.5c, Fig. 6.2.5d and Fig. 6.2.5e



Fig. 6.2.5



Fig. 6.2.5a



Fig. 6.2.5b



Fig. 6.2.5c



Fig. 6.2.5d



Fig. 6.2.5e

Step 5: Finish the hem and the side slit by folding twice at $\frac{1}{4}$ " and giving an edge stitch as shown in Fig.6.2.6, Fig. 6.2.6a, Fig. 6.2.6b, Fig. 6.2.6c and Fig.8.2.6d



Fig. 6.2.6



Fig. 6.2.6a

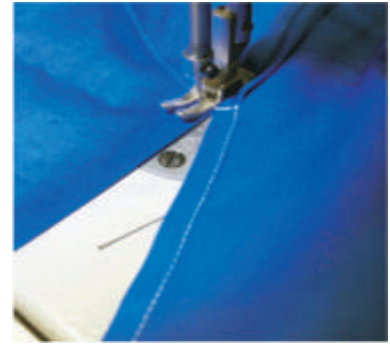


Fig. 6.2.6b



Fig. 6.2.6c



Fig. 6.2.6d

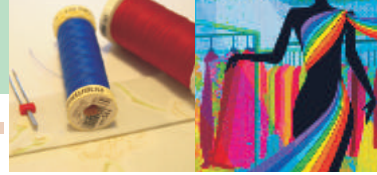


Fig. 6.2.7 (Front)



Fig. 6.2.7a (Back)

(A stitched Kameez / Kurti)



ACTIVITY

Collect visuals of various kinds of salwars & kameez and identify the design details that you can stitch.

Fill in the blanks

1. The waist panel of salwars is attached at _____ with a _____ seam.
2. The ease of the back shoulder is _____ by _____ gathering at the shoulder seam.
3. The side _____ of salwars is also known as _____.
4. The _____ of the lower part of the salwars is either _____ or finished with _____ pleats.
5. The salwar is tied with help of _____ inserted in a _____.