

LESSON 7-GETTING TO KNOW PLANTS

QUESTION 1-FILL IN THE BLANKS.

1. FIBROUS Roots do not have main root.
2. The arrangement of veins in the lamina of leaf is called VENATION.
3. PISTIL is the female part of a flower.
4. Stem of a big tree is called TRUNK.

QUESTION 2-TRUE OR FALSE.

1. Loss of water from the leaves of plant is called transpiration. TRUE
2. Chlorophyll is responsible for green colour of leaves. TRUE
3. The part of stem between two nodes is called internode. TRUE
4. Stamen , is female reproductive part of a flower FALSE

QUESTION 3- MATCH COLUMN A with COLUMN B

COLUMN A	COLUMN B
A.ROOT	a. protect flower when it is in form of bud.
B.CLIMBER	b. absorption of water.
C.GREEN LEAVES	c. holds the plant upright.
D.STEM	d. money plant

ANSWER.

COLUMN A	COLUMN B
A.ROOT	b. absorption of water
B.CLIMBER	d.money plant
C.GREEN LEAVES	a.protect flower when it is in the form of bud.
D.STEM	c.holds the plant upright.

QUESTION 4. CHOOSE THE CORRECT OPTION.

1. Plant of a tree is called

a. herb	b. shrub	c. tree	d. root
---------	----------	---------	---------

Answer. c) tree

2. Photosynthesis takes place in of plants.

a. stem	b. root	c. stamen	d. leaves
---------	---------	-----------	-----------

Answer. d) leaves

3. Part of stem from where leaves grow is called.....

a. bud	b. nodes	c. axil	d.inter-node
--------	----------	---------	--------------

Answer. b) nodes

4. Loss of water from leaves of plant is called.....

a. absorption	b.photosynthesis	c.transpiration	d. suction
---------------	------------------	-----------------	------------

Answer. c)transpiration

QUESTION 5. Very short answers type questions

Question 1. Name the broad green part of a leaf?

Answer. Lamina or leaf blade.

Question 2. What is venation? Write different types of Venation.

Answer. The arrangement of veins in the lamina or leaf Blade is known as venation.

Types of venation are:

a) Reticulate venation b) Parallel venation.

Question 3. What is Calyx?

Answer . The group of outer green leaves or sepals is Called Calyx.

QUESTION 6.SHORT ANSWER TYPE QUESTION

QUESTION 1.Differentiate between tap root and fibrous Root?

Answer.

S.no.	TAP ROOT	FIBROUS ROOT
-------	----------	--------------

1.	It goes deep beneath the soil.	It does not go deep in the soil.
2.	It has one main long root	It does not have any main root.
3.	Roots are of different thickness.	Roots are of same thickness.
4.	Leaves of plants with tap root have reticulate venation.	Leaves of plants with fibrous root have parallel venation.

QUESTION 2. What are the main functions of leaves?

Answer . a) The leaves make food for the plants by the process of photosynthesis.

b) The leaves get rid of excess water from the plants through transpiration.

c) The leaves exchange gases through stomata.

QUESTION 3 .What are the climbers? Give examples.

Answer. A plant having thin, long and weak stem which cannot stand upright but readily climbs up a neighbouring support is called climber.

For example: money plant and grapes.

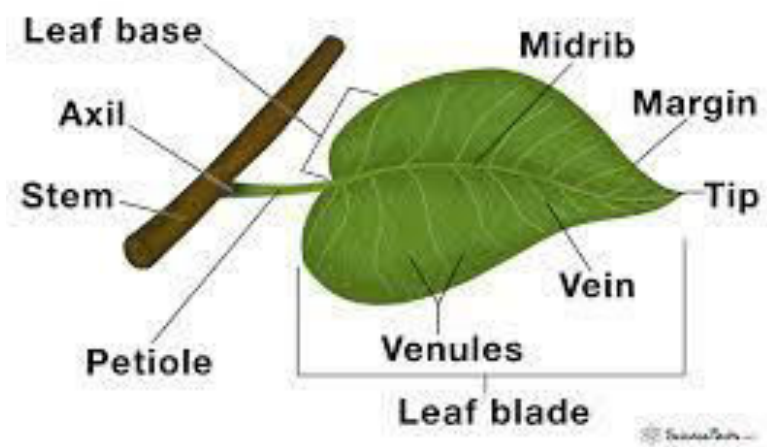
QUESTION 7.LONG ANSWERS TYPE QUESTIONS

QUESTION 1. What are the different parts of a leaf? Explain with the help of a diagram?

Answer. The different parts of a leaf are

1.Petiole 2. Lamina 3.Midrib 4.Veins e.t.c.

Parts of a Leaf



QUESTION 2. Draw a well labelled diagram of flower and explain its main parts.

Answer. Flower is the reproductive part of a plant. Its main parts are (1) SEPALS (2) PETALS (3) STAMEN (4) PISTIL

(1)SEPALS: sepals protect the flower when it is in the form of a bud.

(2)PETALS: Different colour and scent of petals attract insects, butterflies e.t.c for pollination.

(3)STAMEN: Stamen is the male part of a flower. Its main parts are filament and anther. It produces pollen grains.

(4)PISTIL: Pistil is the female part of a flower. Its parts are style, stigma and ovary.

