



## CHAPTER - 7

### Construction of Churidar and Kalidar Kurta

#### 7.1. Construction of Churidar

**Step 1:** Take 2 metres of fabric, and fold it lengthwise as shown in Fig 7.1.1



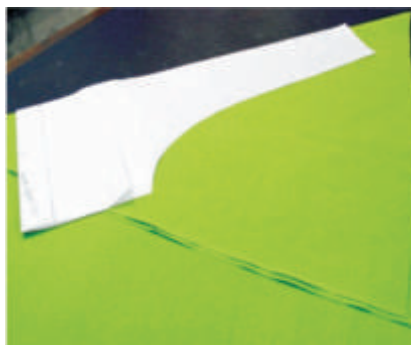
*Fig. 7.1.1*

Then fold the fabric diagonally and place the pattern as shown in Fig 7.1.1a.



*Fig. 7.1.1a*

**Step 2:** Trace and cut out all pieces as shown in Fig 7.1.2 and Fig 7.1.2a.



*Fig. 7.1.2*



*Fig. 7.1.2a*

**Step 3:** Attach the triangular piece of fabric if the pattern doesn't fit as is shown in Fig.7.1.3 and Fig 7.1.3a.



Fig. 7.1.3



Fig. 7.1.3a

**Step 4:** Attach the centre-front and centre-back with 'French Seam' as shown in Fig.7.1.4. Close the inseam as shown in and Fig. 7.1.4a.



Fig. 7.1.4



Fig. 7.1.4a

**Step 5:** Then, create drawstring opening and finish the waist band as done for Salwar in the Waist panel and attach it to the leg panel as shown in Fig. 7.1.5.



Fig. 7.1.5



**Step 6:** Finish hemline by folding the edge and stitch.



*Fig. 7.1.6*

(A stitched and finished Churidar)

## 7.2. Construction of Kalidar Kurta

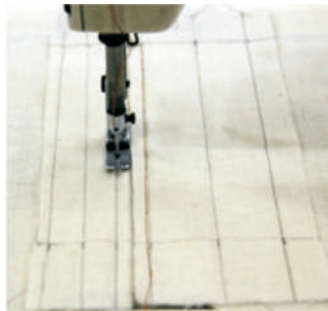
Place and trace the pattern and cut out all pieces as shown in Fig. 7.2.1



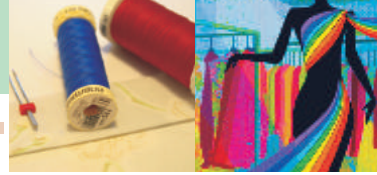
*Fig. 7.2.1*

### 7.2.1 Kurta Placket

**Step 1:** Finish placket at the centre front of the kalidar kurta, as shown in Fig 7.2.2



*Fig. 7.2.2*



Place the placket piece over the right side of neckline opening and stitch at a distance of  $\frac{1}{4}$ " as shown in Fig. 7.2.2a. Fold the placket at fold line and place it over the stitch line, give an edge stitch as shown in Fig. 7.2.2b

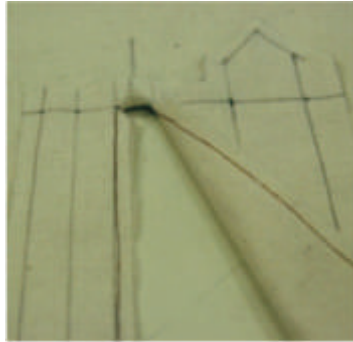


Fig. 7.2.2a



Fig. 7.2.2b

Repeat the same process with the other side and form the diamond by giving an edge stitch as shown in Fig. 7.2.2c and Fig. 7.2.2d.



Fig. 7.2.2c

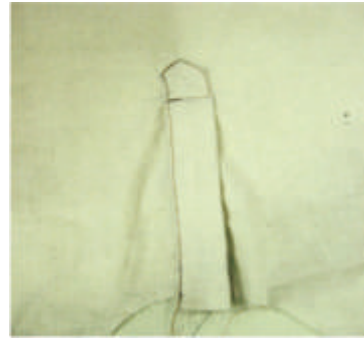


Fig. 7.2.2d

**Step 2:** Join shoulders with tailor's edge and stitch it as shown in Fig. 7.2.3



Fig. 7.2.3

**Step 3:** Mark the pocket position on the fabric. Cut the slit where the pocket has to be folded as shown in Fig. 7.2.4. Fold the fabric neatly at  $\frac{1}{4}$ " and double the fold at another  $\frac{1}{4}$ " as



shown in Fig 7.2.4a. Steam press and then put a top stitch as shown in Fig 7.2.4b and Fig. 7.2.4c.



Fig. 7.2.4



Fig. 7.2.4a

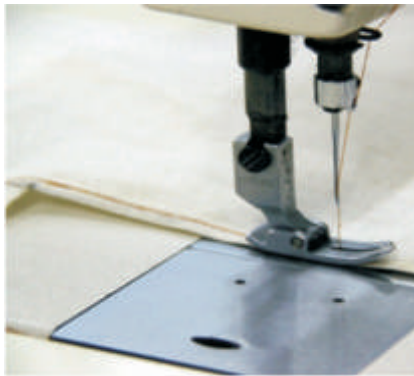


Fig. 7.2.4b

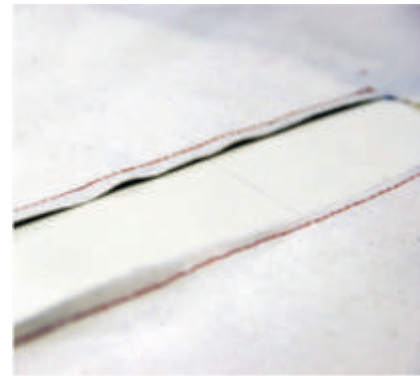


Fig. 7.2.4c

**Step 4:** The right side of the gusset should be facing the right side of the Fabric Stitch the allowance from the wrong side at a seam allowance of 1/2". Attach the gusset as shown in the Fig. 7.2.5



Fig. 7.2.5

Similarly, attach the second panel to the adjacent side of the gusset as shown in Fig. 7.2.5a and Fig. 7.2.5b



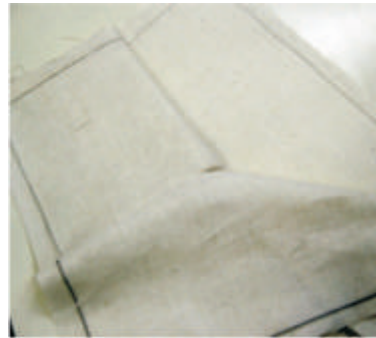
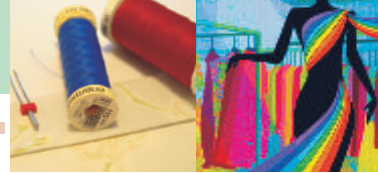


Fig. 7.2.5a



Fig. 7.2.5b

**Step 5:** Continue stitching seam allowance of the two panels upto the vent level. Do not stitch at the pocket mouth opening as shown in Fig. 7.2.5c

With the right sides facing each other, horizontal part of the panel is Stitched with the sleeve.

Similarly, the other end of the sleeve is attached to horizontal line of the Back panel.



Fig. 7.2.5c

**Step 6:** Finish the neckline with a bias strip. Place the bias strip on the right side of the neckline and stitch at a distance 1/4" as shown in Fig.7.2.6. Fold the strip and give an edge stitch as shown in Fig. 7.2.6a. Fold the strip towards the wrong side of the garment along the neckline as shown in Fig.7.2.6b. Fold the raw edge of the bias strip at a distance of 1/4 " and give an edge stitch as shown in Fig. 7.2.6c. The finished neckline will have a double stitch line at the back and a single stitch line at the front as shown in Fig.7.2.6d.



Fig. 7.2.6



Fig. 7.2.6a



Fig 7.2.6b



Fig 7.2.6c



Fig. 7.2.6d

**Step 7:** For finishing the slit, cut a small triangle and fold its raw edges As shown in Fig. 7.2.7.



Fig. 7.2.7

Place it on the wrong side and attach it to the slit by giving a top stitch at the front as shown in Fig. 7.2.7a and Fig. 7.2.7b.

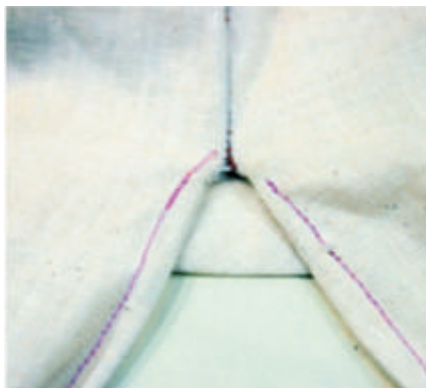


Fig.7.2.7a

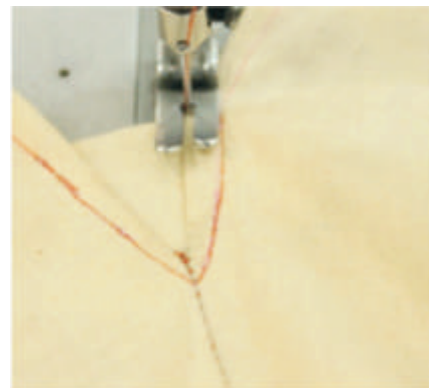
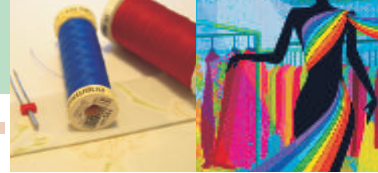


Fig.7.2.7b



**Step 8:** Finish the hemline as described for a Kameez, shown in Fig 7.2.8



*Fig. 7.2.8*



*Fig.7.2.9*  
(A complete Kalidar Kurta with Gusseted sleeve)





## ACTIVITY

Collect visuals of various kinds of Churidar pyjama & Kalidar Kurta and identify the design details that you can stitch.

### Fill in the blanks

1. For Churidar take metres of fabric, and fold it \_\_\_\_\_ and then fold it \_\_\_\_\_.
2. Kalidar Kurta has a \_\_\_\_\_ placket with \_\_\_\_\_ to \_\_\_\_\_ buttons.
3. Pocket of the kurta is attached on the \_\_\_\_\_ of the kali.
3. Gusset in the kurta is attached between \_\_\_\_\_ and \_\_\_\_\_ and provides \_\_\_\_\_ to the sleeve.
4. The side slit in the kurta is \_\_\_\_\_ with a \_\_\_\_\_ piece.