

PRINCIPLES OF INHERITANCE AND VARIATION

IMPORTANT TERMS

- **Genetics:** Study of inheritance, heredity and variation of characters or Study of genes and chromosomes.
- **Inheritance:** Transmission of characters from parents to progeny. It is the basis of **Heredity**.
- **Variation:** Difference between parents and offspring.
- **Character:** A heritable feature among the parents & offspring. E.g. Eye colour.
- **Trait:** Variants of a character. E.g. Brown eye, Blue eye.
- **Allele:** Alternative forms of a gene. E.g. T (tall) and t (dwarf) are two alleles of a gene for the character height.
- **Homozygous:** The condition in which chromosome pair carries similar alleles of a gene. Also known as **pure line**

(True breeding). E.g. TT, tt, YY, yy etc.

- **Heterozygous:** The condition in which chromosome pair carries dissimilar alleles of a gene. E.g. Tt, Yy etc.
- **Dominant character:** The character which is expressed in heterozygous condition. It indicates with capital letter.
- **Recessive character:** The character which is suppressed in heterozygous condition. It indicates with small letter.
- **Phenotype:** Physical expression of a character.
- **Genotype:** Genetic constitution of a character.
- **Hybrid:** An individual produced by the mating of genetically unlike parents.
- **Punnett square:** A graphical representation to calculate probability of all genotypes of offspring in a genetic cross.

MENDEL'S LAWS OF INHERITANCE

Gregor Mendel is the Father of genetics.

He conducted some hybridization experiments on **garden peas** (*Pisum sativum*) for 7 years (1856-1863).

Steps in making a cross (Deliberate mating) in pea:

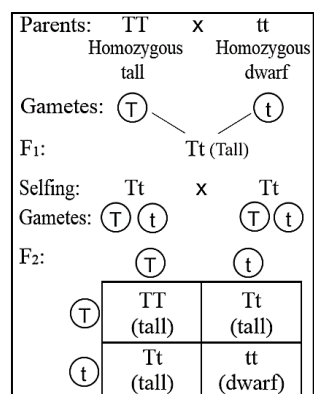
- **Selection** of 2 pea plants with contrasting characters.
- **Emasculation:** Removal of anthers of one plant to avoid self-pollination. This is female parent.
- **Pollination:** Collection of pollen grains from the male parent and transferring to female parent.
- **Collection & germination** of seeds to produce offspring.

Mendel selected 7 pairs of true breeding pea varieties:

7 Characters	Contrasting Traits	
	Dominant	Recessive
1. Stem height	Tall	Dwarf
2. Flower colour	Violet	White
3. Flower position	Axial	Terminal
4. Pod shape	Inflated	Constricted
5. Pod colour	Green	Yellow
6. Seed shape	Round	Wrinkled
7. Seed colour	Yellow	Green

INHERITANCE OF ONE GENE

Monohybrid cross: A cross involving 2 plants differing in one character pair. E.g. Mendel crossed tall and dwarf pea plants to study the inheritance of one gene.



Monohybrid phenotypic ratio:

3 Tall: 1 Dwarf = **3:1**

Monohybrid genotypic ratio:

1 Homozygous tall (TT)
2 Heterozygous tall (Tt)
1 Homozygous dwarf (tt)
= **1:2:1**

Mendel made similar observations for other pairs of traits. He proposed that some **factors** were inherited from

parent to offspring. Now it is called as **genes**.

Do not use **T** for tall and **d** for dwarf because it is difficult to remember whether **T** & **d** are alleles of same gene or not.

The F₁ (Tt) when self-pollinated, produces gametes **T** and **t** in equal proportion. During fertilization, pollen grains of **T** have **50%** chance to pollinate eggs of **T** & **t**. Also, pollen grains of **t** have **50%** chance to pollinate eggs of **T** and **t**.
1/4th of the random fertilization leads to TT (¼ TT).
1/2 (2/4) of the random fertilization leads to Tt (½ Tt).
1/4th of the random fertilization leads to tt (¼ tt).

$$Tt \times Tt$$

Binomial expression = $(ax + by)^2$

$$\text{Hence } \left(\frac{1}{2}T + \frac{1}{2}t\right)^2 = \left(\frac{1}{2}T + \frac{1}{2}t\right)\left(\frac{1}{2}T + \frac{1}{2}t\right)$$

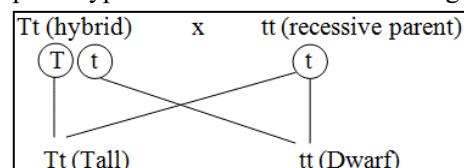
$$= \frac{1}{4}TT + \frac{1}{4}Tt + \frac{1}{4}Tt + \frac{1}{4}tt$$

$$= \frac{1}{4}TT + \frac{1}{2}Tt + \frac{1}{4}tt$$

Mendel self-pollinated the F₂ plants. He found that dwarf F₂ plants continued to generate dwarf plants in F₃ & F₄. He concluded that genotype of the dwarfs was homozygous- **tt**.

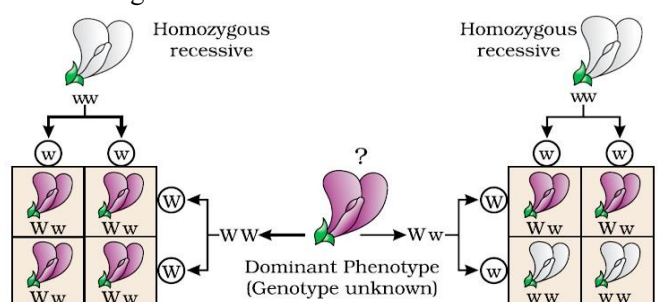
Backcross and Testcross

- **Backcross:** Cross between a hybrid and its any parent.
- **Testcross:** Crossing of an organism with dominant phenotype to a recessive individual. E.g.



Hence monohybrid test cross ratio= **1:1**

Test cross is used to find out the unknown genotype of a character. E.g.



All violet: Unknown flower is homozygous dominant

50% violet, 50% white: Unknown flower is heterozygous

Mendel conducted **test cross** to determine the F₂ genotype.

Mendel's Principles or Laws of Inheritance

1. First Law (Law of Dominance)

- Characters are controlled by discrete units called **factors**.
- Factors occur in pairs.
- In a dissimilar pair of factors, one member of the pair dominates (**dominant**) the other (**recessive**).

2. Second Law (Law of Segregation)

"During gamete formation, the factors (alleles) of a character pair present in parents segregate from each other such that a gamete receives only one of the 2 factors".

Homozygous parent produces similar gametes.

Heterozygous parent produces two kinds of gametes.

INHERITANCE OF TWO GENES

Dihybrid cross: It is a cross between two parents differing in 2 pairs of contrasting characters. E.g. Cross b/w pea plant with homozygous round shaped & yellow coloured seeds (RRYY) and wrinkled shaped & green coloured seeds (rryy).

Parents: RRYY X rryy

Gametes: (RY) (ry)

F₁: RrYy (Round yellow)

Selfing: RrYy X RrYy

Gametes: (RY) (Ry) (rY) (ry) (RY) (Ry) (rY) (ry)

	(RY)	(Ry)	(rY)	(ry)
(RY)	RRYY <i>Ro. Yel</i>	RRYy <i>Ro. Yel</i>	RrYY <i>Ro. Yel</i>	RrYy <i>Ro. Yel</i>
(Ry)	RRYy <i>Ro. Yel</i>	RrYY <i>Ro. Gr</i>	RrYy <i>Ro. Yel</i>	Rryy <i>Ro. Gr</i>
(rY)	RrYY <i>Ro. Yel</i>	RrYy <i>Ro. Yel</i>	rrYY <i>Wri. Yel</i>	rrYy <i>Wri. Yel</i>
(ry)	RrYy <i>Ro. Yel</i>	Rryy <i>Ro. Gr</i>	rrYy <i>Wri. Yel</i>	rryy <i>Wri. Gr</i>

On observing the F₂, Mendel found that yellow and green colour segregated in a 3:1 ratio.

Round & wrinkled seed shape also segregated in a 3:1 ratio.

Dihybrid Phenotypic ratio= 9 Round yellow: 3 Round green: 3 Wrinkled yellow: 1 Wrinkled green = **9:3:3:1**

The ratio of 9:3:3:1 can be derived as a combination series of 3 yellow: 1 green, with 3 round: 1 wrinkled.

i.e. (3: 1) (3: 1) = 9: 3: 3: 1

Dihybrid genotypic ratio: 1:2:1:2:4:2:1:2:1

RRYY	=1	RRYy	=2	RrYY	=2
RrYy	=4	RRyy	=1	Rryy	=2
rrYY	=1	rrYy	=2	rryy	=1

Mendel's 3rd Law: Law of Independent Assortment

- It is based on the results of dihybrid crosses.
- It states that "When two pairs of traits are combined in a hybrid, segregation of one pair of characters is independent of the other pair of characters".

The concept of dominance

- Every gene contains information to express a particular trait.
- In heterozygotes, there are 2 types of alleles:
 - Unmodified (normal or functioning) allele:** It is generally dominant and represents original phenotype.
 - Modified allele:** It is generally recessive.
- E.g. Consider a gene that contains information for producing an enzyme. Normal allele of that gene produces a normal enzyme. Modified allele is responsible for production of
 - (i) Normal/less efficient enzyme or
 - (ii) A non-functional enzyme or
 - (iii) No enzyme at all

In the first case: The modified allele will produce the same phenotype like unmodified allele. Thus, modified allele is equivalent to unmodified allele.

In 2nd and 3rd cases: The phenotype will depend only on the functioning of the unmodified allele. Thus the modified allele becomes recessive.

OTHER PATTERNS OF INHERITANCE (NON-MENDELIAN INHERITANCE)

1. Incomplete Dominance

- It is an inheritance in which heterozygous offspring shows intermediate character b/w two parental characteristics.
- E.g. Flower colour in **snapdragon (dog flower or Antirrhinum sp.)** and **Mirabilis jalapa (4'O clock plant)**.

Parents:	RR	x	rr									
	Red flowered		White flowered									
Gametes:	(R)		(r)									
F ₁ :	Rr (Pink)											
Selfing:	Rr	x	Rr									
Gametes:	(R) (r)		(R) (r)									
F ₂ :	<table><tr><td></td><td>(R)</td><td>(r)</td></tr><tr><td>(R)</td><td>RR (Red)</td><td>Rr (Pink)</td></tr><tr><td>(r)</td><td>Rr (Pink)</td><td>rr (White)</td></tr></table>				(R)	(r)	(R)	RR (Red)	Rr (Pink)	(r)	Rr (Pink)	rr (White)
	(R)	(r)										
(R)	RR (Red)	Rr (Pink)										
(r)	Rr (Pink)	rr (White)										

Here, cross between homozygous **red** & **white** produces **pink** flowered plant. Thus phenotypic & genotypic ratios are same.

Phenotypic ratio=
1 Red: 2 Pink: 1 White

Genotypic ratio=
1 (RR): 2 (Rr): 1 (rr)

This means that **R** was

not completely dominant over **r**.

- Pea plants also show incomplete dominance in other traits.

2. Co-dominance

- It is the inheritance in which both alleles of a gene are expressed in a hybrid. E.g. ABO blood grouping in human.
- ABO blood groups are controlled by the gene **I**.
- This gene controls the production of **sugar polymers (antigens)** that protrude from plasma membrane of RBC.
- The gene **I** has three alleles **I^A**, **I^B** & **i**.
- I^A** and **I^B** produce a slightly different form of the sugar while allele **i** doesn't produce any sugar.

Alleles from parent 1	Alleles from parent 2	Genotype of offspring	Blood types (phenotype)
I ^A	I ^A	I ^A I ^A	A
I ^A	I ^B	I ^A I ^B	AB
I ^A	i	I ^A i	A
I ^B	I ^A	I ^A I ^B	AB
I ^B	I ^B	I ^B I ^B	B
I ^B	i	I ^B i	B
i	i	ii	O

When **I^A** and **I^B** are present together, they both express their own types of sugars. This is due to **co-dominance**.

3. Multiple allelism

- It is the presence of **more than two alleles** of a gene to govern same character.
- E.g. ABO blood grouping (3 alleles: I^A , I^B & i).
- In an individual, only two alleles are present. Multiple alleles can be found only in a population.

4. Polygenic inheritance

- It is the inheritance in which some traits are controlled by several genes (**multiple genes**).
- E.g. human skin colour, human height etc.
- It considers the influence of environment.
- In a polygenic trait, the phenotype reflects the contribution of each allele, i.e., the effect of each allele is additive.

Human skin colour:

- Assume that 3 genes A, B, C control human skin colour. The dominant forms **A, B & C** responsible for **dark skin** colour and recessive forms **a, b & c** for **light skin** colour.
- Genotype with all the dominant alleles (**AABBCC**) gives **darkest skin** colour.
- Genotype with all the recessive alleles (**aabbcc**) gives **lightest skin** colour.
- Therefore, genotype with **3 dominant alleles and 3 recessive alleles** gives **an intermediate skin** colour.

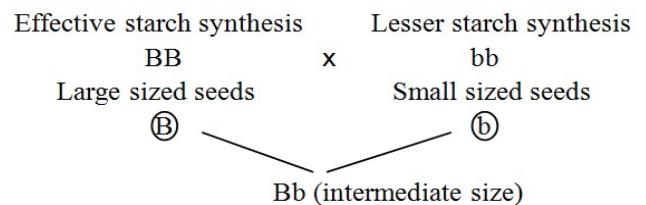
- Thus, number of each type of alleles determines the darkness or lightness of the skin.

5. Pleiotropy

- Here, a single gene exhibits multiple phenotypic expressions. Such a gene is called **pleiotropic gene**.
- In most cases, the mechanism of pleiotropy is the effect of a gene on metabolic pathways which contributes towards different phenotypes.
- E.g. Starch synthesis in pea, sickle cell anaemia, phenylketonuria etc.
- In Phenylketonuria & sickle cell anaemia, the mutant gene has many phenotypic effects. E.g. Phenylketonuria causes mental retardation, reduction in hair and skin pigmentation.

Starch synthesis in pea plant:

- Starch is synthesized effectively by **BB** gene. Therefore, large starch grains are produced. **bb** have lesser efficiency in starch synthesis and produce smaller starch grains.
- Starch grain size also shows **incomplete dominance**.



CHROMOSOMAL THEORY OF INHERITANCE

Mendel's work remained unrecognized till 1900 because,

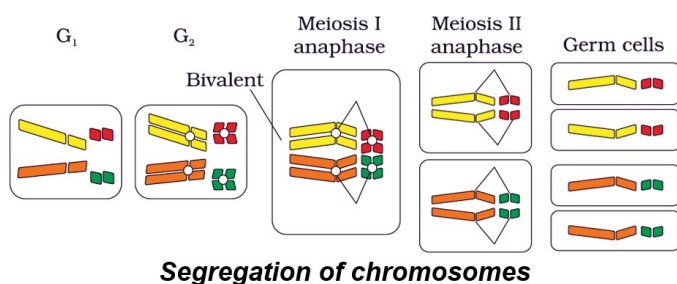
- Communication was not easy.
- His mathematical approach was new and unacceptable.
- The concept of genes (factors) as stable and discrete units could not explain the continuous variation seen in nature.
- He could not give physical proof for the existence of factors.

In 1900, **de Vries, Correns & von Tschermak** independently rediscovered Mendel's results.

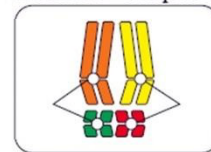
Chromosomal Theory of Inheritance (1902):

- Proposed by **Walter Sutton & Theodore Boveri**.
- They said that pairing & separation of a pair of chromosomes lead to segregation of a pair of factors they carried.
- **Sutton** united chromosomal segregation with Mendelian principles and called it the **chromosomal theory of inheritance**. It states that,
- Chromosomes are **vehicles of heredity**.
- Two identical chromosomes form a **homologous pair**.
- Homologous pair **segregates** during gamete formation.
- Independent pairs **segregate independently** of each other.

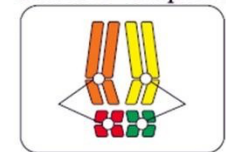
Genes (factors) are present on chromosomes. Hence genes and chromosomes show similar behaviours.



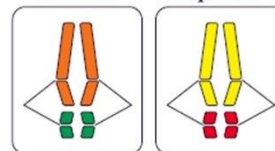
Meiosis I - anaphase



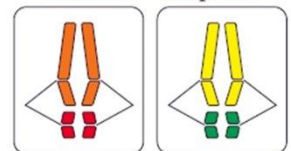
Meiosis I - anaphase



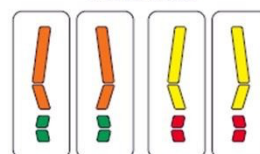
Meiosis II - anaphase



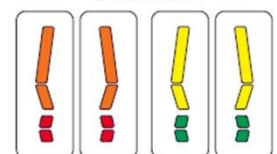
Meiosis II - anaphase



Germ cells



Germ cells



Possibility I

Possibility II

Independent assortment of chromosomes

Thomas Hunt Morgan proved chromosomal theory of inheritance using fruit flies (*Drosophila melanogaster*).

It is the suitable material for genetic study because,

- They can grow on simple synthetic medium.
- Short generation time (life cycle: 12-14 days).
- Breeding can be done throughout the year.
- Hundreds of progenies per mating.
- Male and female flies are easily distinguishable. E.g. Male is smaller than female.
- It has many types of hereditary variations that can be seen with low power microscopes.

LINKAGE AND RECOMBINATION

Linkage is the physical association of two or more genes on a chromosome. They do not show independent assortment.

Recombination is the generation of non-parental gene combinations. It occurs due to independent assortment or crossing over.

Morgan carried out several dihybrid crosses in *Drosophila* to study sex-linked genes. E.g.

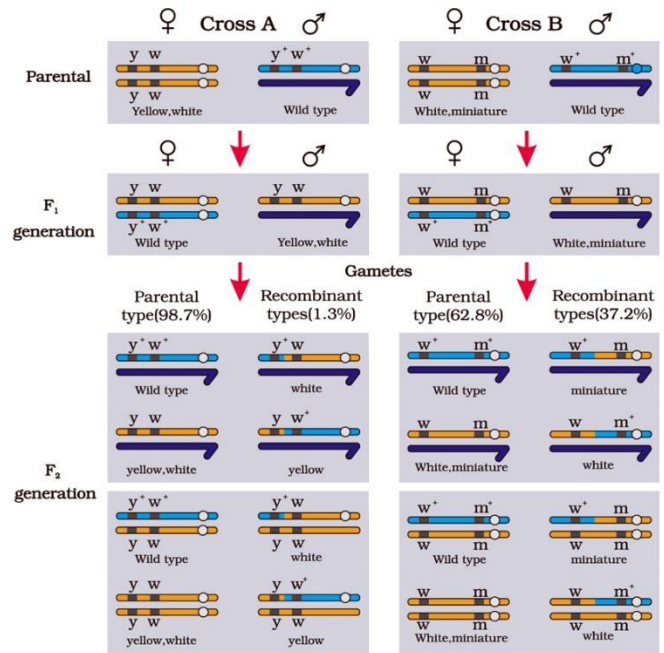
Cross 1: Yellow-bodied, white-eyed females
X
Brown-bodied, red-eyed males (wild type)

Cross 2: White-eyed, miniature winged
X
Red eyed, large winged (wild type)

Morgan intercrossed their F₁ progeny. He found that

- The two genes did not segregate independently and the F₂ ratio deviated from the 9:3:3:1 ratio.
- Genes were located on the X chromosome.
- When two genes were situated on the same chromosome, the proportion of parental gene combinations was much higher than the non-parental type. This is due to **linkage**.
- Genes of white eye & yellow body were very tightly linked and showed only **1.3%** recombination.
- Genes of white eye & miniature wing were loosely linked and showed **37.2%** recombination.

- **Tightly linked genes show low recombination. Loosely linked genes show high recombination.**



Alfred Sturtevant used the recombination frequency between gene pairs for measuring the distance between genes and 'mapped' their position on the chromosome.

Genetic maps are used as a starting point in the sequencing of genomes. E.g. **Human Genome Project**.

SEX DETERMINATION

- The chromosomes that are involved in sex determination are called **sex chromosomes (allosomes)**. They include X & Y chromosomes.
- Autosomes are chromosomes other than sex chromosomes. Number of autosomes is same in males and females.
- **Henking (1891)** studied spermatogenesis in some insects and observed that 50 % of sperm received a nuclear structure after spermatogenesis, and other 50 % sperm did not receive it. Henking called this structure as the **X body** (now it is called as **X-chromosome**).

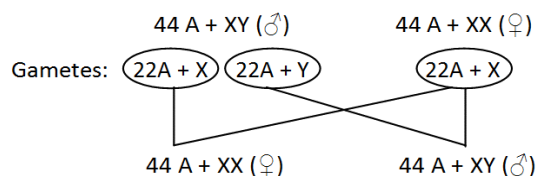
Mechanism of sex determination

- XX-XO mechanism:** Here, male is heterogametic, i.e. XO (Gametes with X and gametes without X) and female is homogametic, i.e. XX (all gametes are with X-chromosomes). E.g. Many insects such as grasshopper.
- XX-XY mechanism:** Male is heterogametic (X & Y) and female is homogametic (X only). E.g. Human & *Drosophila*.
- ZZ-ZW mechanism:** Male is homogametic (ZZ) and female is heterogametic (Z & W). E.g. Birds.
XX-XO & XX-XY mechanisms show **male heterogamety**.
ZZ-ZW mechanism shows **female heterogamety**.

Sex Determination in Humans (XX-XY type)

- Human has 23 pairs of chromosomes (22 pairs of autosomes and 1 pair of sex chromosomes).
- A pair of X-chromosomes (XX) is present in the female, whereas X and Y chromosomes are present in male.

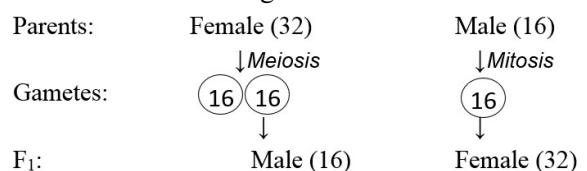
- During spermatogenesis, males produce 2 types of gametes: 50 % with X-chromosome and 50 % with Y-chromosome.
- Females produce only ovum with an X-chromosome.
- There is an equal probability of fertilization of the ovum with the sperm carrying either X or Y chromosome.



The sperm determines whether the offspring male or female.

Sex determination in honeybee

- It is based on the number of sets of chromosomes an individual receives.
- Fertilised egg develops as a female (queen or worker).
- An unfertilised egg develops as a male (drone). It is called **parthenogenesis**.
- Therefore, the females are diploid (32 chromosomes) and males are haploid (16 chromosomes). This is called as **haplodiploid sex determination system**.
- In this system, the males produce sperms by mitosis. They do not have father and thus cannot have sons, but have a grandfather and can have grandsons.



MUTATION, PEDIGREE ANALYSIS AND GENETIC DISORDERS

MUTATION

It is a sudden heritable change in DNA sequences resulting in changes in the genotype and the phenotype of an organism.

Mutation is 2 types:

- ✓ **Point mutation:** The mutation due to change (substitution) in a single base pair of DNA. E.g. sickle cell anaemia.
- ✓ **Frame-shift mutation:** It is the deletion or insertion of base pairs resulting in the shifting of DNA sequences.
- Loss (deletion) or gain (insertion/ duplication) of DNA segment cause Chromosomal abnormalities (aberrations).
- Chromosomal aberrations are seen in **cancer cells**.
- The agents which induce mutation are called **mutagens**. They include
 - **Physical mutagens:** UV radiation, α , β , γ rays, X-ray etc.
 - **Chemical mutagens:** Mustard gas, phenol, formalin etc.

PEDIGREE ANALYSIS

- In human, control crosses are not possible. So the study of family history about inheritance is used.
- Such an analysis of genetic traits in several generations of a family is called **pedigree analysis**.
- The representation or chart showing family history is called **family tree (pedigree)**.
- In human genetics, pedigree study is utilized to trace the inheritance of a specific trait, abnormality or disease.

Symbols used in pedigree analysis

Male: \square Female: \circ Sex unspecified: \diamond

Affected individual: \blacksquare \bullet \blacklozenge Mating: $\square-\circ$

Mating b/w relatives (consanguineous mating): $\square=\circ$

Parents above & children below Parents with affected male child Five unaffected offspring



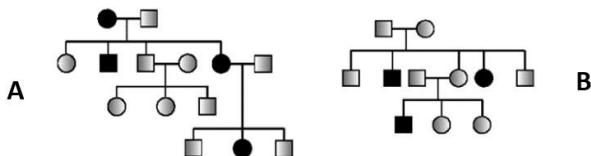
GENETIC DISORDERS

The disorders due to change in genes or chromosomes.

2 types: **Mendelian disorders & Chromosomal disorders.**

1. Mendelian Disorders

- It is caused by alteration or mutation in the single gene.
- E.g. **Haemophilia, Colour blindness, Sickle-cell anaemia, Phenylketonuria, Thalassemia, Cystic fibrosis etc.**
- The pattern of inheritance of Mendelian disorders can be traced in a family by the pedigree analysis.
- Mendelian disorders may be dominant or recessive.
- Pedigree analysis helps to understand whether the trait is dominant or recessive.



Pedigree analysis of

(A) Autosomal dominant trait (E.g. Myotonic dystrophy)

(B) Autosomal recessive trait (E.g. Sickle-cell anaemia)

Haemophilia (Royal disease):

- It is a sex linked (X-linked) recessive disease.
- In this, a protein involved in the blood clotting is affected.
- A simple cut results in non-stop bleeding.
- The disease is controlled by 2 alleles, **H & h**. **H** is normal allele and **h** is responsible for haemophilia.

$X^H X^H$	Normal female
$X^H X^h$	Heterozygous female (carrier). She may transmit the disease to sons.
$X^h X^h$	Hemophilic female
$X^H Y$	Normal male
$X^h Y$	Hemophilic male

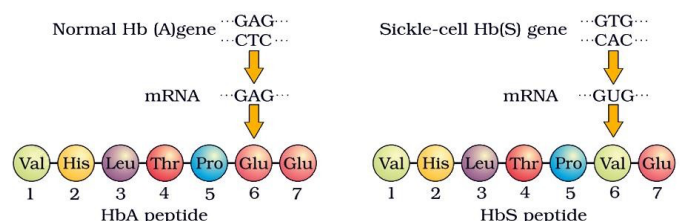
- In females, haemophilia is very rare because it happens only when mother is at least carrier and father haemophilic (unviable in the later stage of life).
- Queen Victoria was a carrier of hemophilia. So her family pedigree shows many haemophilic descendants.

Colour blindness:

- It is a sex-linked (X-linked) recessive disorder due to defect in either red or green cone of eye. It results in failure to discriminate between red and green colour.
- It is due to mutation in some genes in X chromosome.
- It occurs in 8% of males and only about 0.4% of females. This is because the genes are X-linked.
- Normal allele is dominant (C). Recessive allele (c) causes colour blindness.
- The son of a heterozygous woman (carrier, $X^C X^c$) has a 50% chance of being colour blind.
- A daughter will be colour blind only when her mother is at least a carrier and her father is colour blind ($X^c Y$).

Sickle-cell anaemia:

- This is an autosome linked recessive disease.
- It can be transmitted from parents to the offspring when both the partners are carrier (heterozygous) for the gene.
- The disease is controlled by a pair of allele, Hb^A and Hb^S .
Homozygous dominant ($Hb^A Hb^A$): normal
Heterozygous ($Hb^A Hb^S$): carrier; sickle cell trait
Homozygous recessive ($Hb^S Hb^S$): affected
- The defect is caused by the substitution of **Glutamic acid (Glu)** by **Valine (Val)** at the **sixth position** of the **β -globin chain** of the haemoglobin (Hb).



- This is due to the single base substitution at the sixth codon of the **β -globin gene** from **GAG** to **GUG**.
- The mutant Hb molecule undergoes polymerization under low oxygen tension causing the change in shape of the RBC from biconcave disc to elongated sickle like structure.

Phenylketonuria:

- An inborn error of metabolism.

- Autosomal recessive disease.
- It is due to mutation of a gene that codes for the enzyme *phenyl alanine hydroxylase*. This enzyme converts an amino acid *phenylalanine* into *tyrosine*.
- The affected individual lacks this enzyme. As a result, phenylalanine accumulates and converts into *phenyl pyruvic acid* and other derivatives.
- They accumulate in brain resulting in mental retardation. These are also excreted through urine because of poor absorption by kidney.

Thalassemia:

- An autosome-linked recessive blood disease.
- It is transmitted from unaffected carrier (heterozygous) parents to offspring.
- It is due to mutation or deletion.
- It results in reduced synthesis of α or β globin chains of haemoglobin. It forms abnormal haemoglobin and causes anaemia.
- Based on the chain affected, thalassemia is 2 types:
 - **α Thalassemia:** Here, production of **α globin** chain is affected. It is controlled by two closely linked genes **HBA1 & HBA2** on **chromosome 16** of each parent. Mutation or deletion of one or more of the four genes causes the disease. The more genes affected, the less α globin molecules produced.
 - **β Thalassemia:** Here, production of **β globin** chain is affected. It is controlled by a single gene **HBB** on **chromosome 11** of each parent. Mutation of one or both the genes causes the disease.
- Thalassemia is a **quantitative problem** (synthesise very less globin molecules). Sickle-cell anaemia is a **qualitative problem** (synthesise incorrectly functioning globin).

2. Chromosomal disorders

They are caused due to absence or excess or abnormal arrangement of one or more chromosomes. 2 types:

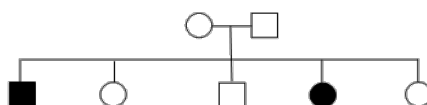
- Aneuploidy:** The gain or loss of chromosomes due to failure of segregation of chromatids during cell division.
- Polyploidy (Euploidy):** It is an increase in a *whole set of chromosomes* due to failure of cytokinesis after telophase stage of cell division. This is very rare in human but often seen in plants.

Examples for chromosomal disorders

- **Down's syndrome:** It is the presence of an additional copy of chromosome number 21 (**trisomy of 21**).
Genetic constitution: **45 A + XX or 45 A + XY** (i.e. 47 chromosomes).
Features:
 - They are short statured with small round head.
 - Broad flat face.
 - Furrowed big tongue and partially open mouth.
 - Many "loops" on finger tips.
 - Broad palm with characteristic palm simian crease.
 - Retarded physical, psychomotor & mental development.
 - Congenital heart disease.
- **Klinefelter's Syndrome:** It is the presence of an additional copy of X-chromosome in male (trisomy).
Genetic constitution: **44 A + XXY** (i.e. 47 chromosomes).
Features:
 - Overall masculine development. However, the feminine development is also expressed. E.g. Development of breast (**Gynaecomastia**).
 - Sterile.
 - Mentally retarded.
- **Turner's syndrome:** This is the absence of one X chromosome in female (monosomy).
Genetic constitution: **44 A + X0** (i.e. 45 chromosomes).
Features:
 - Sterile, Ovaries are rudimentary.
 - Lack of other secondary sexual characters.
 - Dwarf.
 - Mentally retarded.

MODEL QUESTIONS

1. A pure yellow seeded pea plant is crossed to a pure green seeded one. Give the F_2 phenotypic ratio.
2. "All test crosses are backcrosses but all backcrosses are not test cross." Justify.
3. A Dihybrid heterozygous round yellow seeded garden pea was crossed with homozygous double recessive parent.
 - a. What type of a cross is this?
 - b. Represent the cross schematically
 - c. What is the significance of this cross?
4. A diploid organism is heterozygous for 4 loci, how many types of gametes can be produced? (NCERT question)
5. Two heterozygous parents are crossed. If the two loci are linked what would be the distribution of phenotypic features in F_1 generation for a dihybrid cross? (NCERT question)
6. Write down the possible genotypes and phenotypes of the young ones in the following crosses.
 - a. Father and mother: AB group
 - b. Father O group mother AB group
 - c. Father homozygous A group and mother heterozygous B group.
7. *Drosophila* is an ideal material for genetic study. Why?
8. In our society, females are often blamed for producing female child. As a zoology student, evaluate this statement.
9. Analyse the diagram of pedigree analysis and answer the following questions.



- a. Mention the number of male and female offspring.
 - b. How many individuals are affected? Mention the ratio of affected male and female offspring.
 - c. Is this character dominant or recessive? Justify.
 - d. From this chart, find out whether the parents are homozygous or heterozygous.
10. Note the relationship between first two words and fill up the fourth place.
 - a. Human : X & Y *Drosophila*:
 - b. Turner's syndrome : XO Klinefelter's syndrome:
 11. Odd man out and justify your answer.
 - a. 45 A + XX, 45 A + XY, 44 A + XX, 44 A + XO
 - b. Haemophilia, sickle cell anaemia, Turner syndrome, phenyl ketonuria
 12. The beta globin chains of the haemoglobin molecule of two persons are given below.

Person A

Val	His	Ileu	Thr	Pro	Val	Glu
1	2	3	4	5	6	7

Person B

Val	His	Ileu	Thr	Pro	Glu	Glu
1	2	3	4	5	6	7

- a. Which person has abnormal chain?
 - b. Name the disorder affected him.
 - c. Briefly explain the reason for that disorder.
 13. Chromosome sets of four individuals are given below

22AA + XXY, 22AA + XO, 45 A + XX, 45 A + XY

 - a. How many autosomes and allosomes are present in normal male and females?
 - b. Identify and write the names of chromosomal abnormalities in the above listed chromosome set.
 - c. Down's syndrome may occur in both sexes. Comment.
 14. A man suffering from hemophilia marries a carrier woman. Work out the chances of their progeny suffering from the disease. Use a flow chart.