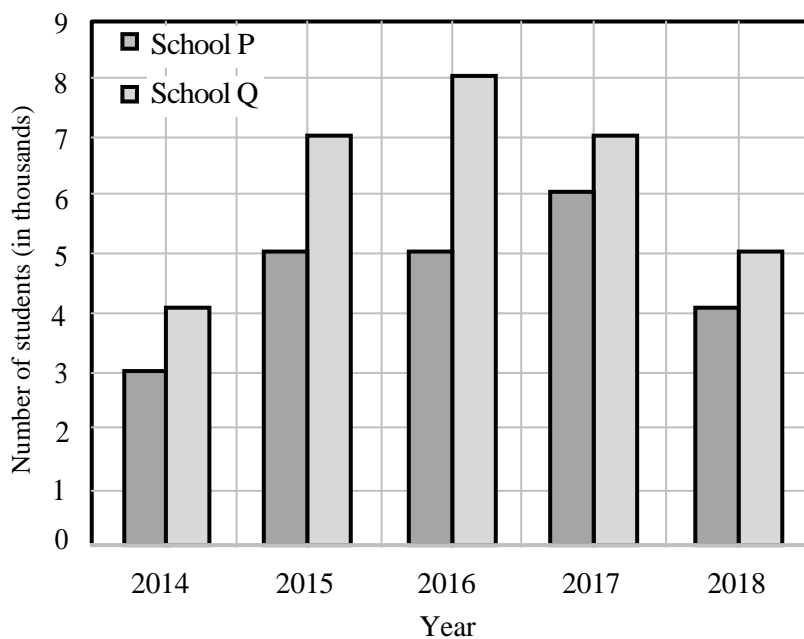


GENERAL APTITUDE**Q. No. 1 - 5 Carry One Mark Each**

1. The following figure shows the data of students enrolled in 5 years (2014 to 2018) for two schools P and Q. During this period, the ratio of the average number of the students enrolled in school P to the average of the difference of the number of students enrolled in schools P and Q is_____.



- (A) 23: 8 (B) 31: 23 (C) 23:31 (D) 8:23

Answer: (A)

.....

2. It is quarter past three in your watch. The angle between the hour hand and the minute hand is _____.

- (A) 0° (B) 15° (C) 22.5° (D) 7.5°

Answer: (D)

3. The global financial crisis in 2008 is considered to be the most serious world-wide financial crisis, which started with the sub-prime lending crisis in USA in 2007. The subprime lending crisis led to the banking crisis in 2008 with the collapse of Lehman Brothers in 2008. The sub-prime lending refers to the provision of loans to those borrowers who may have difficulties in repaying loans, and it arises because of excess liquidity following the East Asian crisis.

Which one of the following sequences shows the correct precedence as per the given passage?

- (A) East Asian crisis → subprime lending crisis → banking crisis → global financial crisis.
- (B) Subprime lending crisis → global financial crisis → banking crisis → East Asian crisis.
- (C) Global financial crisis → East Asian crisis → banking crisis → subprime lending crisis.
- (D) Banking crisis → subprime lending crisis → global financial crisis → East Asian crisis.

Answer: (A)

4. The Canadian constitution requires that equal importance be given to English and French. Last year, Air Canada lost a lawsuit, and had to pay a six-figure fine to a French-speaking couple after they filed complaints about formal in-flight announcements in English lasting 15 seconds, as opposed to informal 5 second messages in French.

The French-speaking couple were upset at

- (A) the English announcements being clearer than the French ones.
- (B) the English announcements being longer than the French ones.
- (C) equal importance being given to English and French.
- (D) the in-flight announcements being made in English

Answer: (A)

5. A superadditive function $f(\bullet)$ satisfies the following property

$$f(x_1 + x_2) \geq f(x_1) + f(x_2)$$

Which of the following functions is a superadditive function for $x > 1$?

- (A) e^x
- (B) e^{-x}
- (C) \sqrt{x}
- (D) $1/x$

Answer: (A)

Q. No. 6 - 10 Carry Two Marks Each

6. Select the word that fits the analogy:

Explicit: Implicit:: Express:_____

- (A) Compress (B) Suppress (C) Impress (D) Repress

Answer: (D)

7. He was not only accused of theft _____ of conspiracy.

- (A) but also (B) rather (C) but even (D) rather than

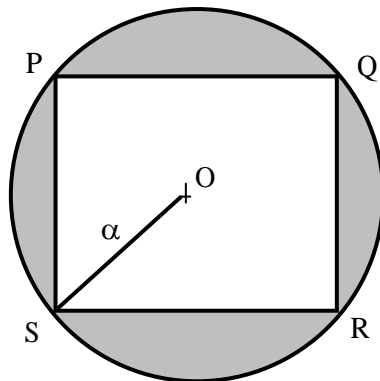
Answer: (A)

8. a, b, c are real numbers. The quadratic equation $ax^2 - bx + c = 0$ has equal roots, which is β , then

- (A) $\beta = \frac{b}{a}$ (B) $b^2 \neq 4ac$ (C) $\beta^3 = \frac{bc}{(2a^2)}$ (D) $\beta^2 = ac$

Answer: (D)

9. A circle with centre O is shown in the figure. A rectangle PQRS of maximum possible area is inscribed in the circle. If the radius of the circle is a, then the area of the shaded portion is_____.



- (A) $\pi a^2 - 2a^2$ (B) $\pi a^2 - \sqrt{2}a^2$ (C) $\pi a^2 - 3a^2$ (D) $\pi a^2 - a^2$

Answer: (A)

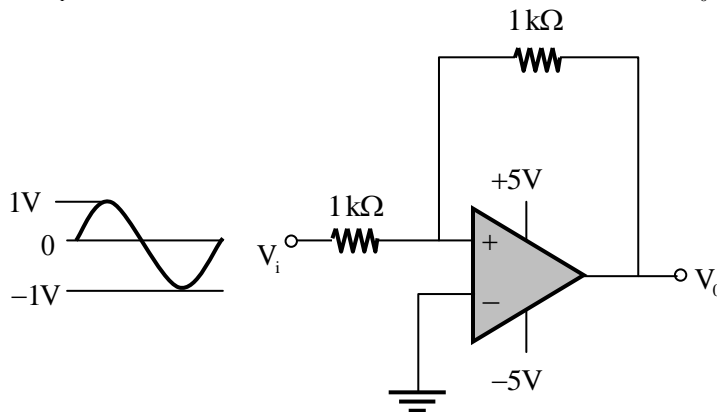
10. The untimely loss of life is a cause of serious global concern as thousands of people get killed_____ accidents every year while many other die_____ diseases like cardio vascular disease, cancer, etc.
(A) from, from (B) during, from (C) from, of (D) in, of

Answer: (D)

ELECTRONICS AND COMMUNICATION ENGINEERING

Q. No. 1 – 25 Carry One Mark Each

1. The components in the circuit shown below are ideal. If the op-amp is in positive feedback and the input voltage V_i is a sine wave of amplitude 1V, the output voltage V_o is



- (A) a non-inverted sine wave of 2V amplitude.
(B) a constant of either +5V or -5V.
(C) an inverted sine wave of 1 V amplitude.
(D) a square wave of 5 V amplitude

Answer: (B)

2. The partial derivative of the function

$$f(x, y, z) = e^{1-x \cos y} + xze^{-1/(1+y^2)}$$

With respect to x at the point (1, 0, e) is

- (A) $\frac{1}{e}$ (B) 1 (C) -1 (D) 0

Answer: (D)

3. The general solution of $\frac{d^2y}{dx^2} - 6\frac{dy}{dx} + 9y = 0$ is

- (A) $y = C_1e^{3x} + C_2e^{-3x}$ (B) $y = (C_1 + C_2x)e^{3x}$
(C) $y = (C_1 + C_2x)e^{-3x}$ (D) $y = C_1e^{3x}$

Answer: (B)

4. The loop transfer function of a negative feedback system is

$$G(s)H(s) = \frac{K(s+11)}{s(s+2)(s+8)}$$

The value of K, for which the system is marginally stable, is _____.

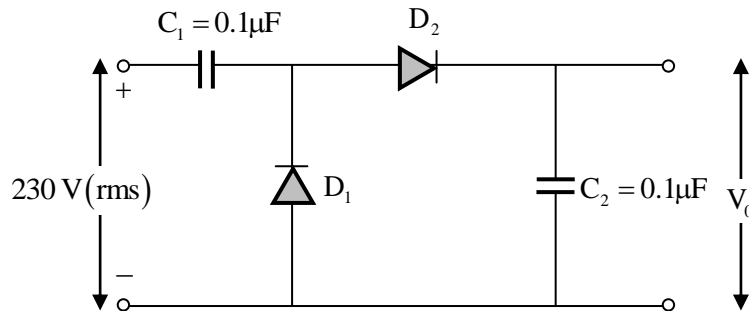
Answer: (160)

5. For a vector field \vec{A} , which one of the following is FALSE?

- (A) $\nabla \times \vec{A}$ is another vector field.
(B) \vec{A} is irrotational if $\nabla^2 \vec{A} = 0$.
(C) $\nabla \times (\nabla \times \vec{A}) = \nabla(\nabla \cdot \vec{A}) - \nabla^2 \vec{A}$
(D) \vec{A} is solenoidal if $\nabla \cdot \vec{A} = 0$.

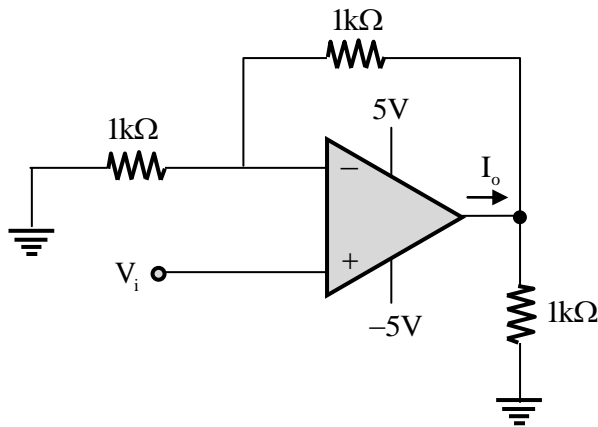
Answer: (B)

6. In the circuit shown below, all the components are ideal, and the input voltage is sinusoidal. The magnitude of the steady-state output V_0 (**rounded off to two decimal places**) is _____ V.



Answer: (650.538)

7. In the circuit shown below, all the components are ideal. If V_i is $+2V$, the current I_o sourced by the op-amp is _____ mA.

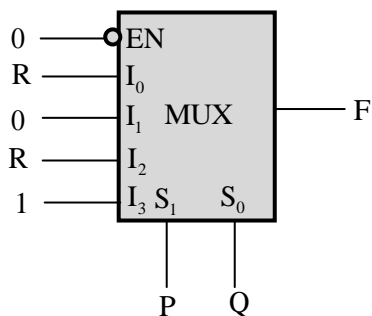


Answer: (6)

8. A binary random variable X takes value $+2$ or -2 . The probability $P(X=+2)=\alpha$. The value of α (**rounded off to one decimal place**), for which the entropy of X is maximum, is _____.

Answer: (0.5)

9. The figure below shows a multiplexer where S_1 and S_0 are the select lines, I_0 to I_3 are the input data lines, EN is the enable line, and $F(P, Q, R)$ is the output. F is

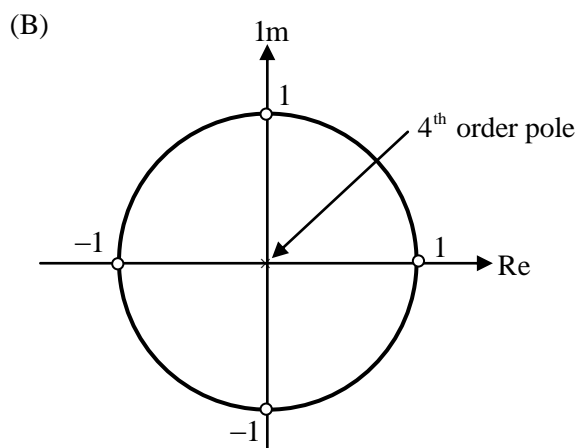
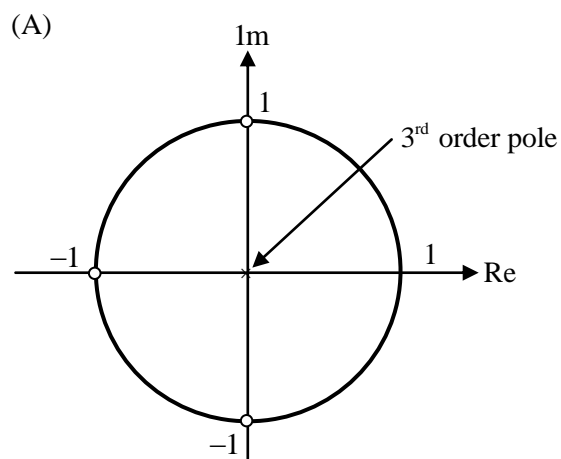


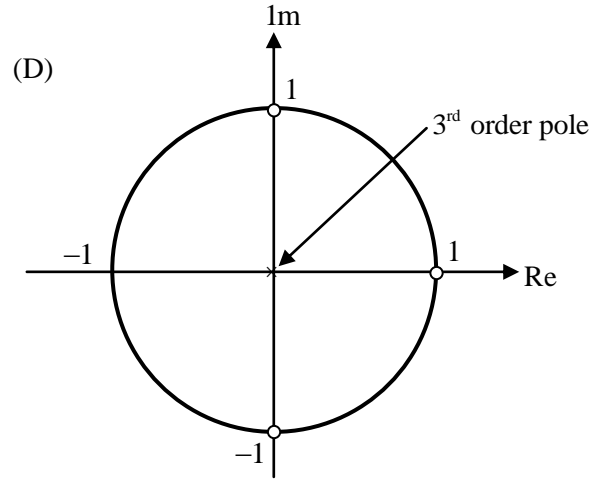
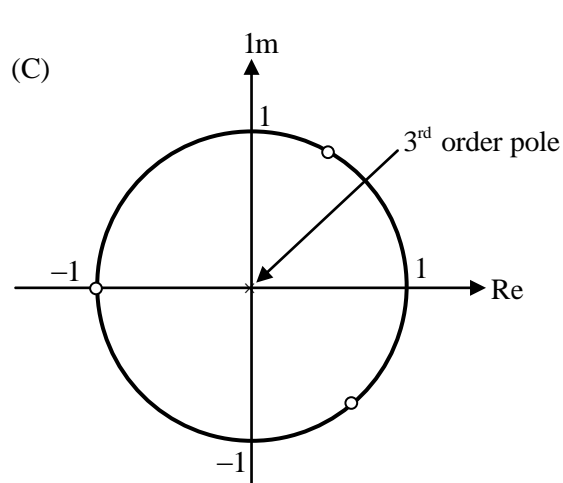
- (A) $P\bar{Q}R + \bar{P}Q$. (B) $P + Q\bar{R}$ (C) $\bar{Q} + PR$ (D) $PQ + \bar{Q}R$

Answer: (D)

10. Which one of the following pole-zero plots corresponds to the transfer function of an LTI system characterized by the input-output difference equation given below?

$$y[n] = \sum_{k=0}^3 (-1)^k x[n-k]$$





Answer: (D)

11. A transmission line of length $3\lambda/4$ and having a characteristic impedance of 50Ω is terminated with a load of 400Ω . The impedance (**rounded off to two decimal places**) seen at the input end of the transmission line is _____ Ω .

Answer: (6.25)

12. A single crystal intrinsic semiconductor is at a temperature of 300K with effective density of states for holes twice that of electrons. The thermal voltage is 26 mV.

The intrinsic Fermi level is shifted from mid-bandgap energy level by

- (A) 9.01 meV (B) 18.02 meV (C) 13.45 meV (D) 26.90 meV

Answer: (A)

13. In an 8085 microprocessor, the number of address lines required to access a 16 K byte memory bank is _____.

Answer: (14)

14. The random variable

$$Y = \int_{-\infty}^{\infty} W(t) \phi(t) dt, \text{ where } \phi(t) = \begin{cases} 1; & 5 \leq t \leq 7 \\ 0; & \text{otherwise} \end{cases}$$

And $W(t)$ is a real white Gaussian noise process with two-sided power spectral density $S_w(f) = 3 \text{ W/Hz}$, for all f . The variance of Y is _____.

Answer: (6)

15. A digital communication system transmits a block of N bits. The probability of error in decoding a bit is α . The error event of each bit is independent of the error events of the other bits. The received block is declared erroneous if at least one of its bits is decoded wrongly. The probability that the received block is erroneous is

(A) $N(1-\alpha)$ (B) $1-\alpha^N$ (C) $1-(1-\alpha)^N$ (D) α^N

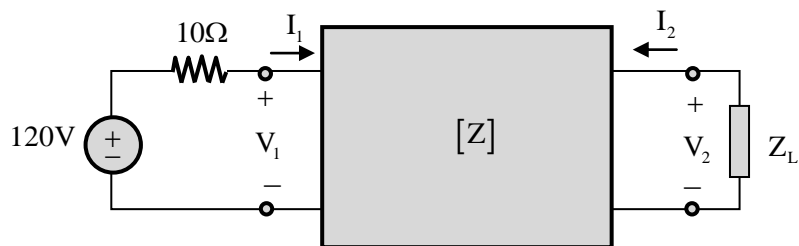
Answer: (C)

16. A 10-bit D/A converter is calibrated over the full range from 0 to 10 V. If the input to the D/A converter is 13A (in hex), the output (**rounded off to three decimal places**) is _____ V.

Answer: (3.066)

17. In the given circuit, the two-port network has the impedance matrix $[Z] = \begin{bmatrix} 40 & 60 \\ 60 & 120 \end{bmatrix}$. The value of Z_L

for which maximum power is transferred to the load is _____ Ω .



Answer: (48)

18. The output $y[n]$ of a discrete-time system for an input $x[n]$ is

$$y[n] = \max_{-\infty \leq k \leq n} |x[k]|$$

The unit impulse response of the system is

- (A) unit step signal $u[n]$. (B) unit impulse signal $\delta[n]$.
(C) 1 for all n . (D) 0 for all n .

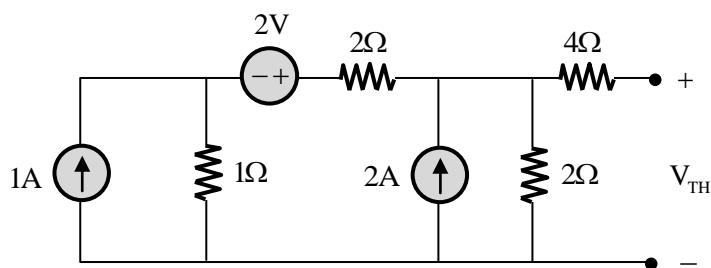
Answer: (A)

19. If v_1, v_2, \dots, v_6 are six vectors in \mathbb{R}^4 , which one of the following statements is FALSE?

- (A) If $\{v_1, v_3, v_5, v_6\}$ spans \mathbb{R}^4 , then it forms a basis for \mathbb{R}^4 .
(B) Any four of these vectors form a basis for \mathbb{R}^4 .
(C) These vectors are not linearly independent.
(D) It is not necessary that these vectors span \mathbb{R}^4 .

Answer: (B)

20. In the circuit shown below, the Thevenin voltage V_{TH} is

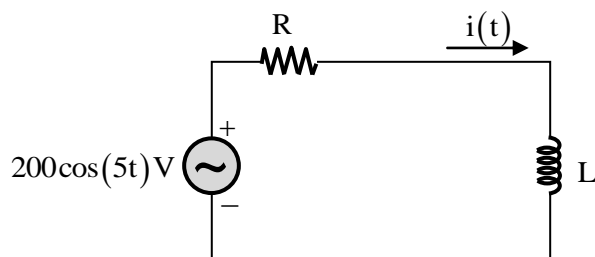


- (A) 4.5V (B) 2.4V (C) 3.6V (D) 2.8V

Answer: (C)

21. The current in the RL-circuit shown below is $i(t) = 10 \cos(5t - \pi/4)$ A.

The value of the inductor (rounded off to two decimal places) is _____ H.



Answer: (2.82)

22. The impedances $Z = jX$, for all X in the range $(-\infty, \infty)$, map to the Smith chart as

- (A) a line passing through the centre of the chart.
- (B) a point at the centre of the chart.
- (C) a circle of radius 0.5 with centre at (0.5,0).
- (D) a circle of radius 1 with centre at (0, 0).

Answer: (D)

23. Consider the recombination process via bulk traps in a forward biased pn homojunction diode. The maximum recombination rate is U_{\max} . If the electron and the hole capture cross-sections are equal, which one of the following is FALSE?

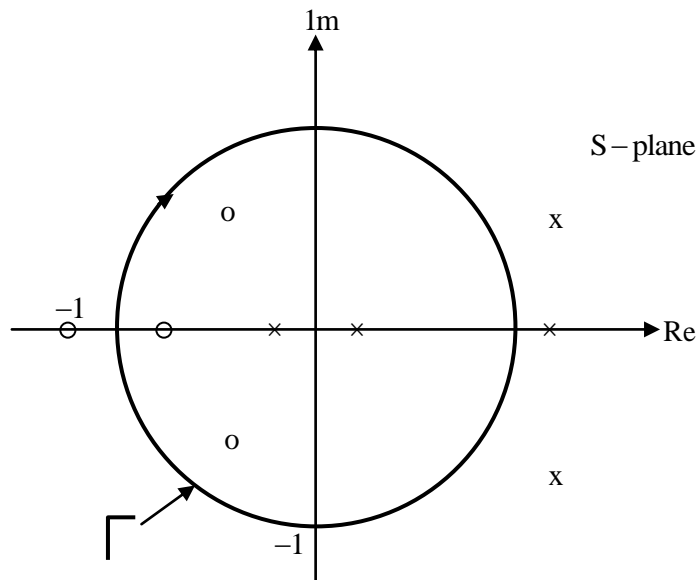
- (A) With all other parameters unchanged, U_{\max} decreases if the intrinsic carrier density is reduced.
- (B) U_{\max} depends exponentially on the applied bias.
- (C) With all other parameters unchanged, U_{\max} increases if the thermal velocity of the carriers increases.
- (D) U_{\max} occurs at the edges of the depletion region in the device

Answer: (D)

24. The two sides of a fair coin are labelled as 0 and 1. The coin is tossed two times independently. Let M and N denote the labels corresponding to the outcomes of those tosses. For a random variable X, defined as $X = \min(M, N)$, the expected value $E(X)$ (rounded off to two decimal places) is _____.

Answer: (0.25)

25. The pole-zero map of a rational function $G(s)$ is shown below. When the closed contour Γ is mapped into the $G(s)$ - plane, then the mapping encircles

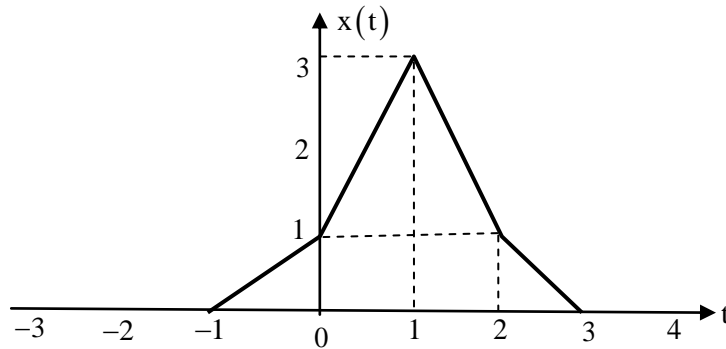


- (A) the point $-1+j0$ of the $G(s)$ -plane once in the clockwise direction.
- (B) the point $-1+j0$ of the $G(s)$ -plane once in the counter-clockwise direction.
- (C) the origin of the $G(s)$ -plane once in the clockwise direction
- (D) the origin of the $G(s)$ -plane once in the counter-clockwise direction.

Answer: (C)

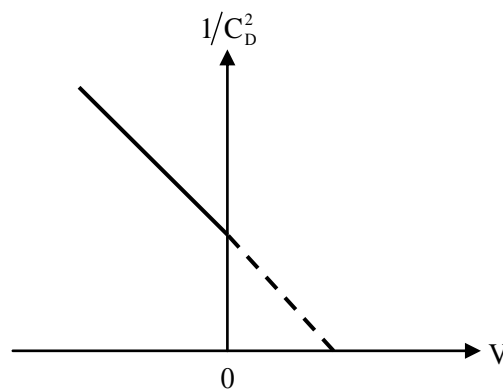
Q. No. 26 - 55 Carry Two Marks Each

26. $X(\omega)$ is the Fourier transform of $x(t)$ shown below. The value of $\int_{-\infty}^{\infty} |X(\omega)|^2 d\omega$ (rounded off to two decimal places) is_____.



Answer: (58.61)

27. A one-sided abrupt pn junction diode has a depletion capacitance C_D of 50 pF at a reverse bias of 0.2V. The plot of $1/C_D^2$ versus the applied voltage V for this diode is a straight line as shown in the figure below. The slope of the plot is _____ $\times 10^{20} \text{ F}^{-2} \text{ V}^{-1}$.



(A) -3.8

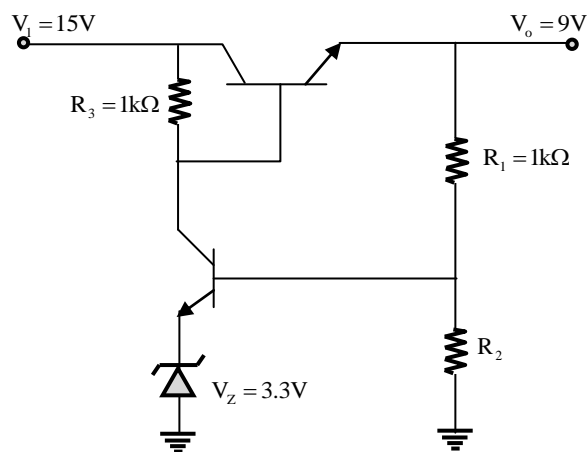
(B) -1.2

(C) -5.7

(D) -0.4

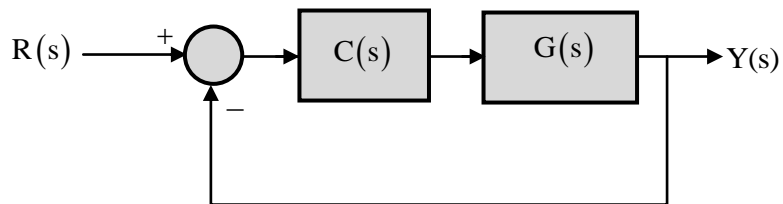
Answer: (*)

28. In the voltage regulator shown below, V_i is the unregulated input at 15V. Assume $V_{BE} = 0.7V$ and the base current is negligible for both the BJTs. If the regulated output V_o is 9V, the value of R_2 is _____ Ω .



Answer: (800)

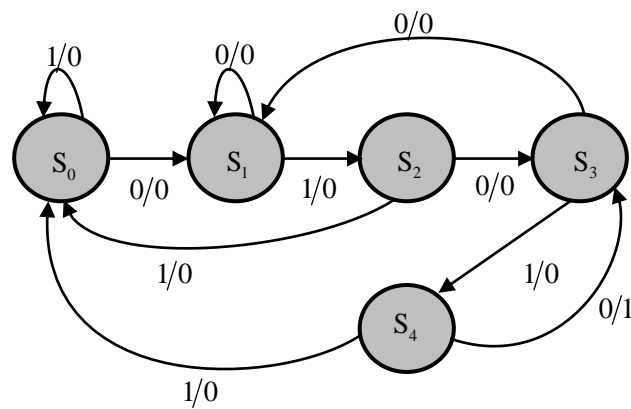
29. Consider the following closed loop control system



where $G(s) = \frac{1}{s(s+1)}$ and $C(s) = K \frac{s+1}{s+3}$. If the steady state error for a unit ramp input is 0.1, then the value of K is _____.

Answer: (30)

30. The state diagram of a sequence detector is shown below. State S_0 is the initial state of the sequence detector. If the output is 1, then



- (A) the sequence 01010 is detected (B) the sequence 01110 is detected.
 (C) the sequence 01001 is detected (D) the sequence 01011 is detected

Answer: (A)

31. The characteristic equation of a system is

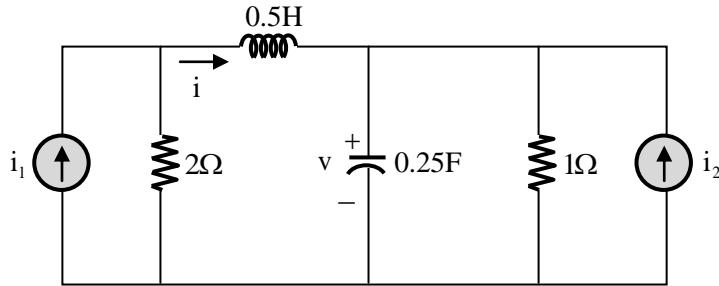
$$s^3 + 3s^2 + (K + 2)s + 3K = 0$$

In the root locus plot for the given system, as K varies from 0 to ∞ , the break-away or break-in point(s) lie within

- (A) $(-\infty, -3)$ (B) $(-3, -2)$ (C) $(-1, 0)$ (D) $(-2, -1)$

Answer: (C)

32. For the given circuit, which one of the following is the correct state equation?

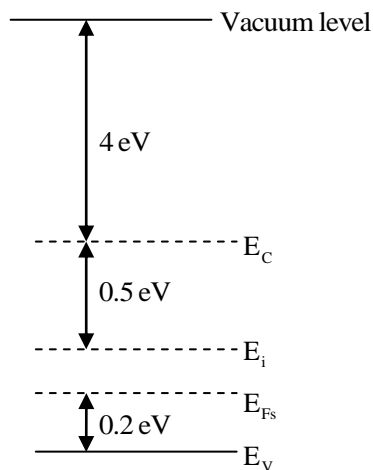


- (A) $\frac{d}{dt} \begin{bmatrix} v \\ i \end{bmatrix} = \begin{bmatrix} -4 & -4 \\ -2 & 4 \end{bmatrix} \begin{bmatrix} v \\ i \end{bmatrix} + \begin{bmatrix} 4 & 4 \\ 0 & 4 \end{bmatrix} \begin{bmatrix} i_1 \\ i_2 \end{bmatrix}$
- (B) $\frac{d}{dt} \begin{bmatrix} v \\ i \end{bmatrix} = \begin{bmatrix} -4 & -4 \\ -2 & -4 \end{bmatrix} \begin{bmatrix} v \\ i \end{bmatrix} + \begin{bmatrix} 4 & 0 \\ 0 & 4 \end{bmatrix} \begin{bmatrix} i_1 \\ i_2 \end{bmatrix}$
- (C) $\frac{d}{dt} \begin{bmatrix} v \\ i \end{bmatrix} = \begin{bmatrix} -4 & 4 \\ -2 & -4 \end{bmatrix} \begin{bmatrix} v \\ i \end{bmatrix} + \begin{bmatrix} 0 & 4 \\ 4 & 0 \end{bmatrix} \begin{bmatrix} i_1 \\ i_2 \end{bmatrix}$
- (D) $\frac{d}{dt} \begin{bmatrix} v \\ i \end{bmatrix} = \begin{bmatrix} 4 & -4 \\ -2 & -4 \end{bmatrix} \begin{bmatrix} v \\ i \end{bmatrix} + \begin{bmatrix} 0 & 4 \\ 4 & 4 \end{bmatrix} \begin{bmatrix} i_1 \\ i_2 \end{bmatrix}$

Answer: (C)

33. The band diagram of a p-type semiconductor with a band-gap of 1 eV is shown.

Using this semiconductor, a MOS capacitor having V_{TH} of $-0.16V$, C'_{ox} of 100 nF/cm^2 and a metal work function of 3.87 eV is fabricated. There is no charge within the oxide. If the voltage across the capacitor is V_{TH} , the magnitude of depletion charge per unit area (in C/cm^2) is

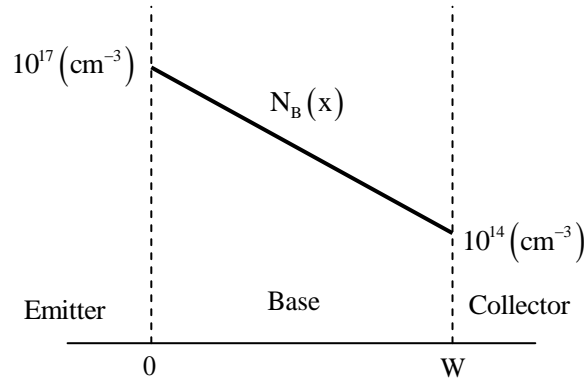


- (A) 0.93×10^{-8} (B) 1.41×10^{-8} (C) 0.52×10^{-8} (D) 1.70×10^{-8}

Answer: (D)

34. The base of an npn BJT T1 has a linear doping profile $N_B(x)$ has shown below.

The base of another npn BJT T2 has a uniform doping N_B of 10^{17} cm^{-3} . All other parameters are identical for both the devices. Assuming that the hole density profile is the same as that of doping, the common-emitter current gain of T2 is



- (A) approximately 2.0 times that of T1 (B) approximately 2.5 times that of T1
(C) approximately 0.3 times that of T1 (D) approximately 0.7 times that of T1

Answer: (A)

35. A finite duration discrete-time signal $x[n]$ is obtained by sampling the continuous-time signal $x(t) = \cos(200\pi t)$ at sampling instants $t = n/400$, $n=0,1,\dots,7$. The 8-point discrete Fourier transform (DFT) of $x[n]$ is defined as

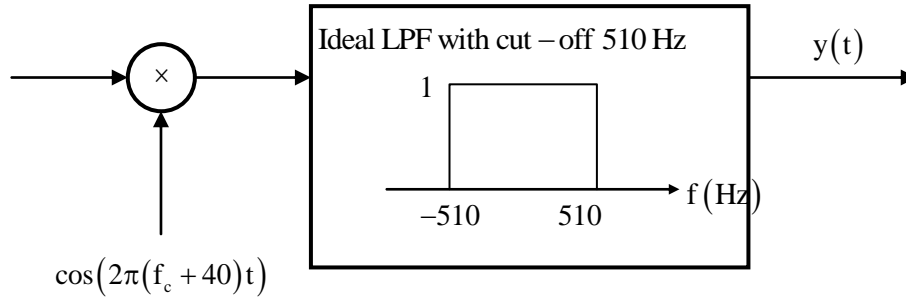
$$X[k] = \sum_{n=0}^7 x[n] e^{-j\frac{\pi kn}{4}}, \quad k = 0, 1, \dots, 7.$$

Which one of the following statements is TRUE?

- (A) Only $X[3]$ and $X[5]$ are non-zero (B) Only $X[4]$ is non-zero.
(C) Only $X[2]$ and $X[6]$ are non-zero (D) All $X[k]$ are non-zero.

Answer: (C)

36. For the modulated signal $x(t) = m(t) \cos(2\pi f_c t)$, the message signal $m(t) = 4\cos(1000\pi t)$ and the carrier frequency f_c is 1MHz, The signal $x(t)$ is passed through a demodulator, as shown in the figure below. The output $y(t)$ of the demodulator is



- (A) $\cos(920\pi t)$ (B) $\cos(460\pi t)$ (C) $\cos(1000\pi t)$ (D) $\cos(540\pi t)$

Answer: (A)

37. Consider the following system of linear equations

$$x_1 + 2x_2 = b_1; \quad 2x_1 + 4x_2 = b_2; \quad 3x_1 + 7x_2 = b_3; \quad 3x_1 + 9x_2 = b_4$$

Which one of the following conditions ensures that a solution exists for the above system?

- (A) $b_3 = 2b_1$ and $3b_1 - 6b_3 + b_4 = 0$ (B) $b_3 = 2b_1$ and $6b_1 - 3b_3 + b_4 = 0$
 (C) $b_2 = 2b_1$ and $3b_1 - 6b_3 + b_4 = 0$ (D) $b_2 = 2b_1$ and $6b_1 - 3b_3 + b_4 = 0$

Answer: (D)

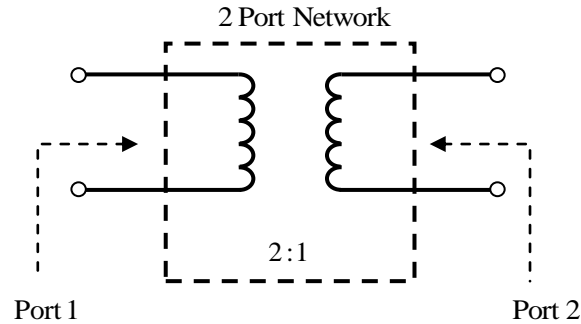
38. The magnetic field of a uniform plane wave in vacuum is given by

$$\vec{H}(x, y, z, t) = (\hat{a}_x + 2\hat{a}_y + b\hat{a}_z) \cos(\omega t + 3x - y - z).$$

The value of b is _____.

Answer: (1)

39. For a 2-port network consisting of an ideal lossless transformer, the parameter S_{21} (rounded off to two decimal places) for a reference impedance of $10\ \Omega$, is _____.

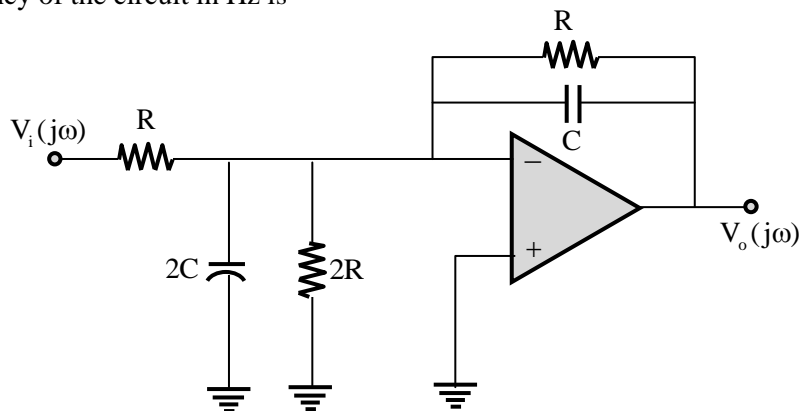


Answer: (0.8)

40. P, Q and R are the decimal integers corresponding to the 4-bit binary number 1100 considered in signed magnitude, 1's complement, and 2's complement representations, respectively. The 6-bit 2's complement representation of $(P+Q+R)$ is
- (A) 110101 (B) 111001 (C) 110010 (D) 111101

Answer: (A)

41. The components in the circuit given below are ideal. If $R = 2\text{k}\Omega$ and $C = 1\ \mu\text{F}$, the -3 dB cut-off frequency of the circuit in Hz is



(A) 79.58

(B) 34.46

(C) 14.92

(D) 59.68

Answer: (A)

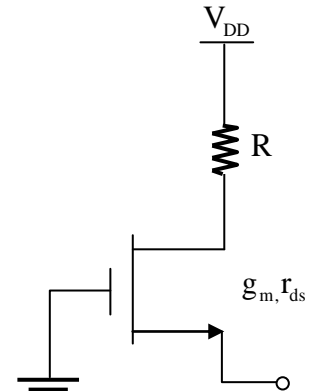
42. Using the incremental low frequency small-signal model of the MOS device, the Norton equivalent resistance of the following circuit is

(A) $\frac{r_{ds} + R}{1 + g_m r_{ds}}$

(B) $r_{ds} + R + g_m r_{ds} R$

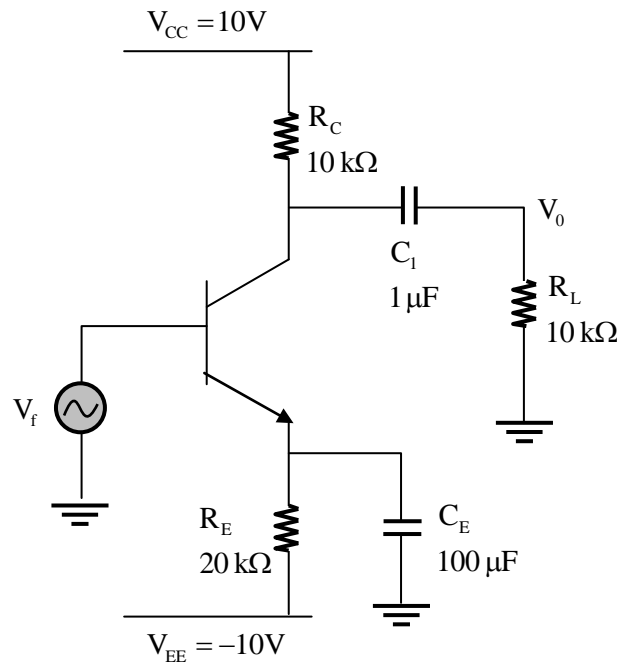
(C) $r_{ds} + \frac{1}{g_m} + R$

(D) $r_{ds} + R$



Answer: (A)

43. For the BJT in the amplifier shown below, $V_{BE} = 0.7V$, $kT/q = 26 \text{ mV}$. Assume that BJT output resistance (r_o) is very high and the base current is negligible.



The capacitors are also assumed to be short circuited at signal frequencies. The input V_i is direct coupled. The low frequency voltage gain v_o/v_i of the amplifier is

- (A) -178.85 (B) -128.21 (C) -256.42 (D) -89.42

Answer: (D)

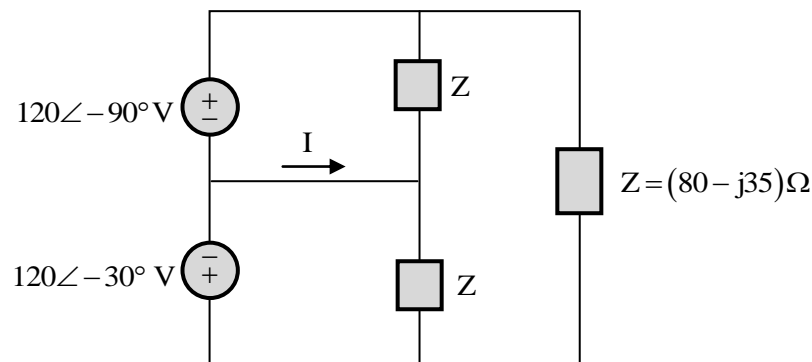
- 44.** In a digital communication system, a symbol S randomly chosen from the set $\{s_1, s_2, s_3, s_4\}$ is transmitted. It is given that $s_1 = -3, s_2 = -1, s_3 = +1$ and $s_4 = +2$. The received symbol is $T = S + W$. W is a zero-mean unit-variance Gaussian random variable and is independent of S . P_i is the conditional probability of symbol error for the maximum likelihood (ML) decoding when the transmitted symbol $S = s_i$. The index if for which the conditional symbol error probability P_i is the highest is _____.

Answer: (3)

- 45.** Which one of the following options contains two solutions of the differential equation $\frac{dy}{dx} = (y-1)x$?
- (A) $\ln|y-1| = 2x^2 + C$ and $y = 1$ (B) $\ln|y-1| = 2x^2 + C$ and $y = -1$
- (C) $\ln|y-1| = 0.5x^2 + C$ and $y = 1$ (D) $\ln|y-1| = 0.5x^2 + C$ and $y = -1$

Answer: (C)

- 46.** The current I in the given network is



(A) $2.38\angle -23.63^\circ \text{ A}$.

(B) $2.38\angle 143.63^\circ \text{ A}$

(C) $2.38\angle -96.37^\circ \text{ A}$

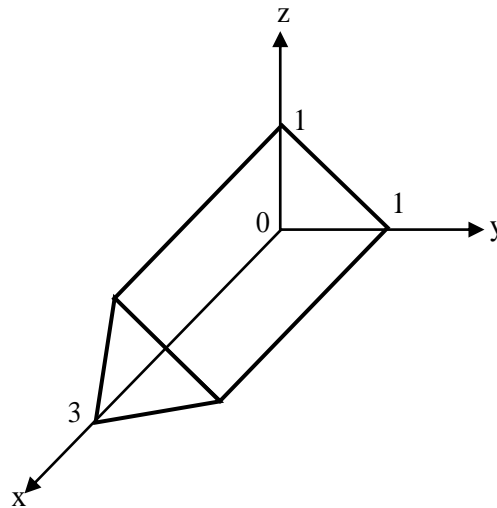
(D) 0 A .

Answer: (B)

47. A system with transfer function $G(s) = \frac{1}{(s+1)(s+a)}$, $a > 0$ is subjected on an input $5\cos 3t$. The steady state output of the system is $\frac{1}{\sqrt{10}}\cos(3t - 1.892)$. The value of a is _____.

Answer: (4)

48. For the solid S shown below, the value of $\iiint_S x dx dy dz$ (rounded off to two decimal places) is _____.



Answer: (2.25)

49. A pn junction solar cell of area 1.0 cm^2 , illuminated uniformly with 100 mW cm^{-2} , has the following parameters: Efficiency = 15%, open circuit voltage = 0.7V, fill factor = 0.8, and thickness = $200 \mu\text{m}$. The charge of an electron is $1.6 \times 10^{-9} \text{ C}$. The average optical generation rate (in $\text{cm}^{-3} \text{ s}^{-1}$) is

(A) 1.04×10^{19}

(B) 0.84×10^{19}

(C) 5.57×10^{19}

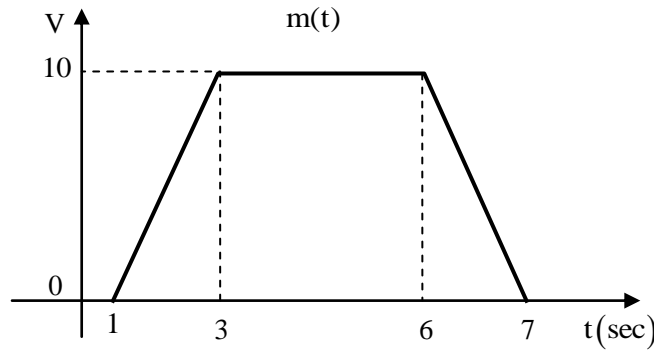
(D) 83.60×10^{19}

Answer: (B)

- 50.** $S_{PM}(t)$ and $S_{FM}(t)$ as defined below, are the phase modulated and the frequency modulated waveforms, respectively, corresponding to the message signal $m(t)$ shown in the figure.

$$S_{PM}(t) = \cos(1000\pi t + K_p m(t))$$

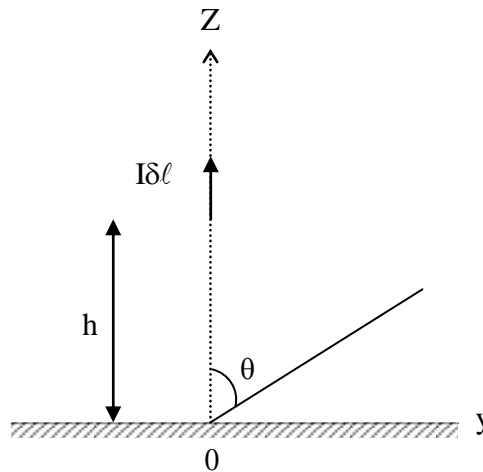
$$\text{and } S_{FM}(t) = \cos\left(1000\pi t + K_f \int_{-\infty}^t m(\tau) d\tau\right)$$



Where K_p is the phase deviation constant in radians/volt and K_f is the frequency deviation constant in radians/second/volt. If the highest instantaneous frequencies of $S_{PM}(t)$ and $S_{FM}(t)$ are same, then the value of the ratio $\frac{K_p}{K_f}$ is _____ seconds.

Answer: (2)

- 51.** For an infinitesimally small dipole in free space, the electric field E_θ in the far field is proportional to $(e^{-jkr}/r)\sin\theta$, where $k = 2\pi/\lambda$. A vertical infinitesimally small electric dipole ($\delta\ell \ll \lambda$) is placed at a distance h ($h > 0$) above an infinite ideal conducting plane, as shown in the figure. The minimum value of h , for which one of the maxima in the far field radiation pattern occurs at $\theta = 60^\circ$, is



- (A) 0.5λ (B) λ (C) 0.25λ (D) 0.75λ

Answer: (B)

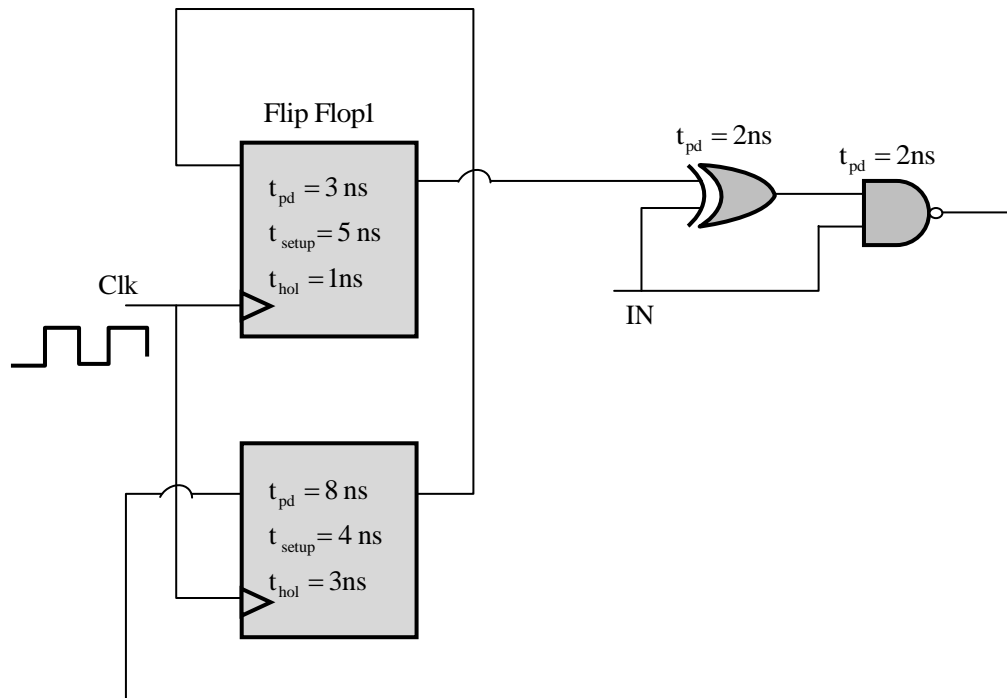
- 52.** The transfer function of a stable discrete-time LTI system is $H(z) = \frac{K(z - \alpha)}{z + 0.5}$ where K and α are real numbers. The value of α (**rounded off to one decimal place**) with $|\alpha| > 1$, for which the magnitude response of the system is constant over all frequencies, is _____.

Answer: (-2)

- 53.** X is a random variable with uniform probability density function in the interval $[-2, 10]$. For $Y = 2X - 6$, the conditional probability $P(Y \leq 7 | X \geq 5)$ (**rounded off to three decimal places**) is _____.

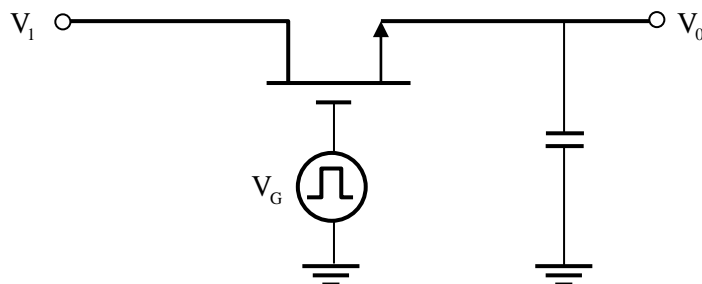
Answer: (0.3)

- 54.** For the components in the sequential circuit shown below, t_{pd} is the propagation delay, t_{setup} is the setup time, and t_{hold} is the hold time. The maximum clock frequency (**rounded off to the nearest integer**), at which the given circuit can operate reliably, is _____ MHz.



Answer: (76.92)

55. An enhancement MOSFET of threshold voltage 3 V is being used in the sample and hold circuit given below. Assume that the substrate of the MOS device is connected to -10V. If the input voltage V_i lies between $\pm 10V$, the minimum and the maximum values of V_G required for proper sampling and holding respectively, are



- (A) 3V and -3V (B) 13V and -7V (C) 10V and -10V (D) 10 V and -13 V

Answer: (B)