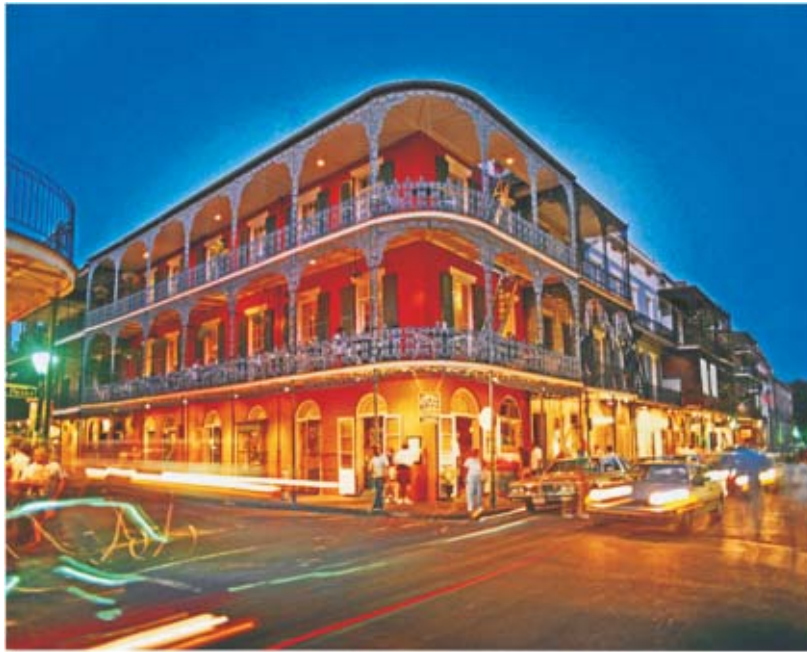


- Have you seen a building on fire?
- Can it cause a loss of life and property?
- What steps can we take to put out a fire?

**Let us read the following conversation about the fire, its causes and the safety measures we should undertake.**



[Lalita and Devendra were in Keshav market last Saturday. They are the students of sixth class. They had gone there to buy a dictionary and some books from a bookshop.]

“We have almost finished,” said Devendra. “Let us go home back.”

“Wait a minute' said Lalita,” She pointed at a group of people. They were standing on a pavement. Some of them were pointing at a large building. It was a hotel.

“I can see some smoke' said Lalita. 'The hotel is on fire. We should make a phone

call for help.”

Lalita took out her mobile phone. She dialed 101, the phone number of the fire



fighting service.

After a few seconds a voice said, “Fire fighting service here. Where is the fire?”

”There is a fire in Keshav market,” said Lalita to the man. “The hotel is on fire. Please send a fire engine quickly.”

“Thank you very much for the phone call,” said the man. “We are sending some fire engines to put out the fire. You are a good girl. You have tried to help us. Please tell us your name and the name of your school.”



Lalita told the fireman her name and the name of her school. The fire engine arrived in fifteen minutes and put out the fire. Most of the furniture was burnt but luckily there was no loss of life.

“What can be the causes of a fire?” said Lalita to the fire brigade officer.

The fire brigade officer said, “A burning matchstick, a spark from a firewood stove, a burning *bidi* or cigarette, a short circuit because of the use of low quality electric wires and equipments, over heating of electrical appliances, a leaking gas cylinder, nearness of petrol and diesel with fire, firing of crackers, etc. can be the major causes of a fire.”

“What steps should we take to put out a fire,” Lalita said to the fire brigade officer.

The fire brigade officer replied that we should not throw a burning matchstick, bidi, cigarette, cracker, etc. here and there. We should use standard electrical equipments and appliances. We should keep our gas cylinder in safe condition.

We should keep the highly inflammable things away from fire. We should keep a fire extinguisher.

We should switch off the main switch in the case of electric fire. And we should throw only sand over it and not water in any condition.

Lalita thanked the fire brigade officer and returned home with Devendra. She was very happy when she got a prize on the Republic Day.

### Glossary

pavement	:	footpath
appliances	:	devices designed to perform a specific task

inflammable	:	easily set on fire
extinguisher	:	a device to put out a fire
short circuit	:	a faulty connection in an electrical circuit

### Activity I



#### A. Tick the correct alternative

##### I. Which of the following should we throw to put out the electric fire?

- a) Water
- b) Stone
- c) Sand
- d) None of the above

##### II. Lalita got a prize on the Republic Day because

- a) She helped to put out the fire.
- b) She was an intelligent student.
- c) She saw the hotel on fire.
- d) None of the above.

#### B. Say whether the following statements are 'True' or 'False'. Write 'T' for 'True' and 'F' for 'False' in the given brackets.

- i) The bookshop was on fire. (      )
- ii) Lalita made a call from the landline phone. (      )
- iii) The phone number of the fire fighting service is 101. (      )
- iv) Overheating of the electrical appliances can cause a fire. (      )
- v) We should keep the gas cylinder in safe condition. (      )

**C. Complete the following statements**

- i) They were standing on a .....
- ii) Please send a fire engine.....
- iii) You are a good.....
- iv) Luckily there was no loss of .....
- v) We should use standard electrical equipments and .....

**Activity II**



**A. Fill in the blanks by choosing suitable words from the box-**

matchstick	crackers	inflammable
spark	smoke	prize

- i) "I can see.....," said Lalita.
- ii) A burning ..... can cause a fire.
- iii) Keep the highly ..... things away from a fire.
- iv) Lalita got a ..... on the Republic Day.
- v) A ..... from a firewood stove can cause a fire.
- vi) Firing of ..... can be the cause of a fire.

**B. Match the words in column 'A' with the words opposite in meaning in column 'B'**

**A**

sell  
bad  
profit  
minor  
sad

**B**

loss  
major  
happy  
buy  
good



### Activity III



**Compare the sentences in each of the following pairs**

Lalita said to the man, “There is a fire in Keshav market.”

Lalita told the man that there was a fire in Keshav market.

Lalita said, “People are standing there.”

Lalita said that people were standing there.

- The first sentence in each pair is in ‘direct speech’.
- The second sentence in each pair is in indirect speech.
- Direct speech is placed between inverted commas.
- The first word of the direct speech is capitalized.
- The reporting verb is cut off by a comma.
- The above 'direct speeches' are in assertive sentences.
- In the conversion of assertive sentences, the reporting verb 'said' is changed into 'told' (if it has an object) and the preposition 'to' is dropped.
- Conjunction 'that' is used.
- Comma and inverted commas are dropped.
- The initial letter of the first word of the direct speech is made small in the indirect speech.
- Present tense is changed with its corresponding past tense. If the reporting verb is in the past tense.

**Now convert the following sentences into indirect speech**

- Devendra said, “The shopping has almost finished.”
- Lalita said to Devendra, “A hotel is on fire.”
- The fireman said, “The fire engine quickly puts out the fire.”

- iv) People said to the fireman, “ There is no fire extinguisher in the hotel.”
- v) The fireman said, “ Lalita is a good girl.”
- vi) Devendra said to Lalita, “ A fire engine works fast.”

### Activity IV



**In groups of four, read out the following pairs of words and find the difference in sounds. Your teacher will help you in case of any difficulty -**

share	chair	sheet	cheat
shin	chin	ship	chip
sheep	cheap	shop	chop
cash	catch	dish	ditch
mush	much	wash	watch
hush	hutch	swish	switch

### Activity V



**What steps should we take to put out a fire? Write six sentences about it.**

---



---



---



---