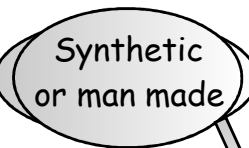
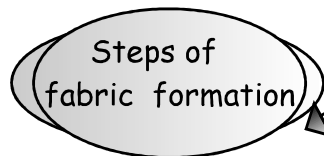
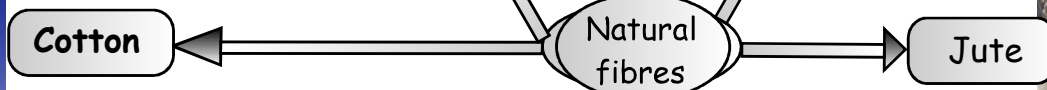
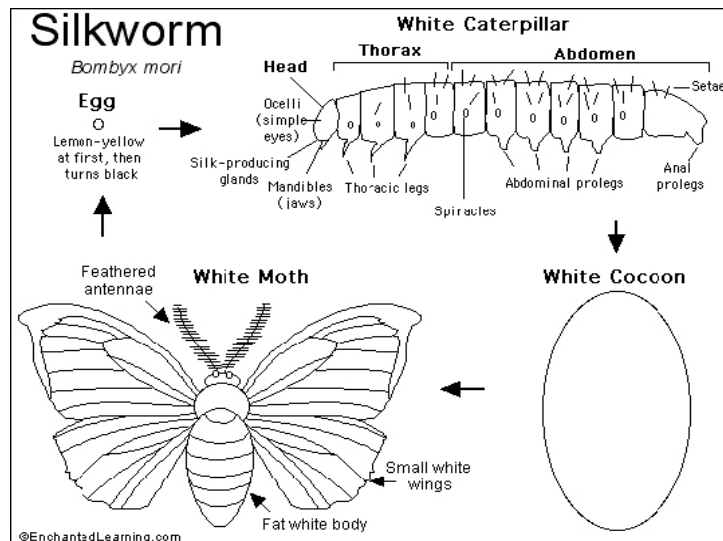


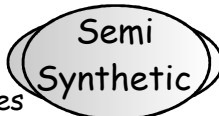
• **Shearing** : The fleece of the sheep along with a thin layer of skin is removed from its body.

**Scouring** : The sheared skin with hair is thoroughly washed in tanks to remove grease, dust and dirt

**Sorting** : Separation of hair of different textures is called sorting



A thread like part in animal and vegetable tissues



Modified natural fibres



Rayon  
(Artificial silk)

1. Absorbs moisture
2. Lustrous and resembles silk

