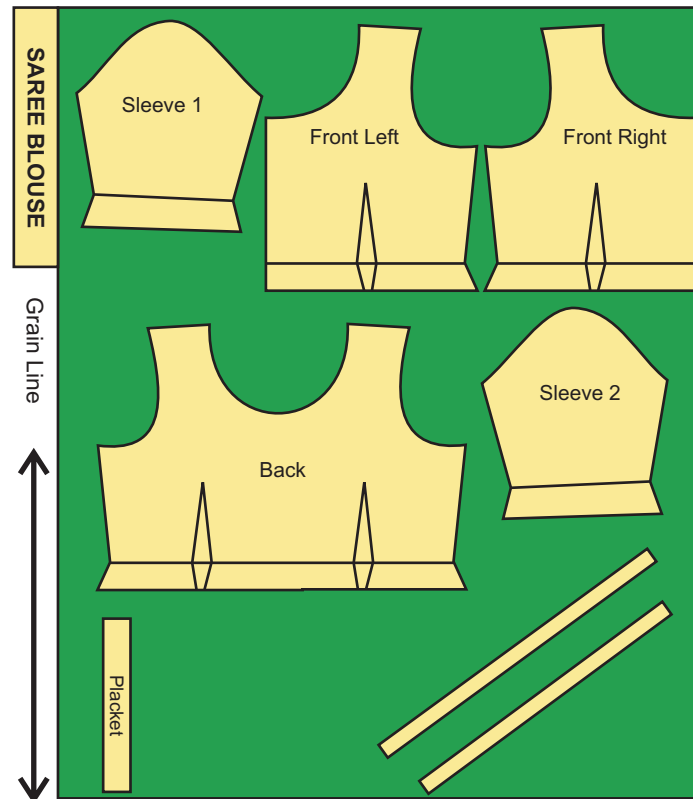


CHAPTER - 8

Constructon of Sari Blouse and Choliblouse

8.1 Construction of Sari Blouse

Trace the pattern on the fabric according to the marker and cut out all the pieces.



Step 1: Close all the darts without reinforcing at the vanishing point.

Leave a 1" long thread and twist as shown in Fig 8.1.1 and Fig 8.1.1a

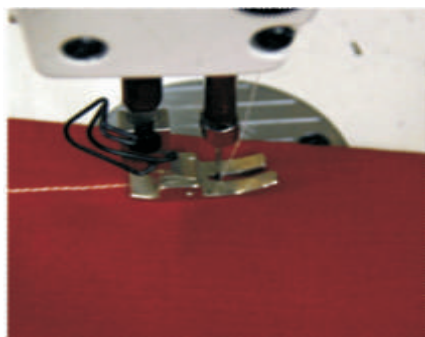


Fig. 8.1.1

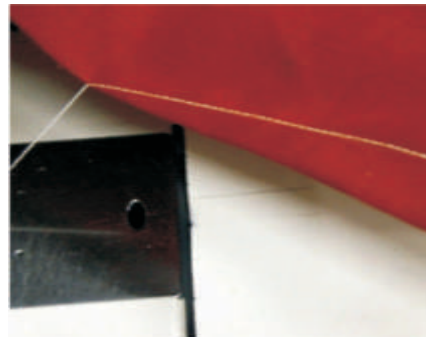


Fig. 8.1.1a



8.1.1 Construction of Sari Blouse placket

Step 2: Finish the over placket by placing right side of the placket over the right side of fabric and by stitching at a distance of 1/4 " as shown in

Fig 8.1.2. Fold the placket and give edge stitch as shown in Fig 8.1.2a

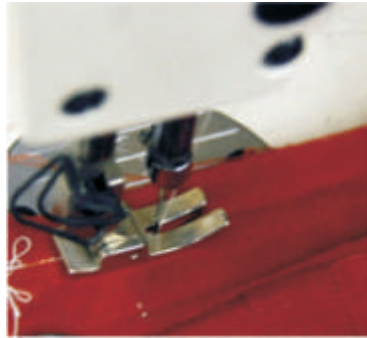


Fig. 8.1.2



Fig. 8.1.2a

Fold the placket towards the wrong side of the blouse. Fold the raw edge and give an edge stitch or slip-hem it as shown in Fig 8.1.2b

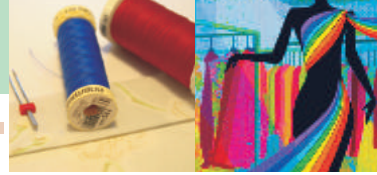


Fig. 8.1.2b

Step 3: Finish the under placket by placing the wrong side of placket over the wrong side of fabric and stitch on the right side at a distance of 1/4 " as shown in Fig 8.1.3



Fig. 8.1.3



Fold the placket towards the right side. Now fold the raw edge of the placket leaving a distance of $\frac{3}{4}$ ", as shown in Fig 8.1.3a. Place it over the stitch line as shown in Fig.8.1.3b



Fig.8.1.3a



Fig. 8.1.3b

Give an edge stitch in such a way that the stitch comes over the placket edge on the wrong side, as shown in Fig. 8.1.3c and Fig. 8.1.3d

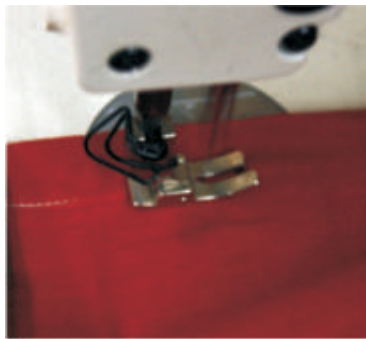


Fig. 8.1.3c



Fig. 8.1.3d

Step 4: Attach the shoulders with either French seam or tailor's edge as shown in Fig 8.1.4.



Fig 8.1.4

Step 5: Close the side seams with tailor's edge seam as shown in Fig 8.1.5



Fig. 8.1.5

Step 6: Finish the sleeve's hem by slip hemming and close the seam with tailor's edge as shown in Fig 8.1.6.



Fig. 8.1.6

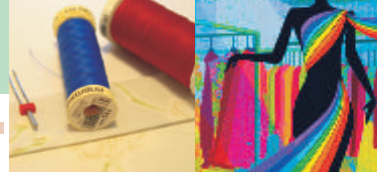
Place the right side of the sleeve over the right side of the blouse's armhole as shown in Fig 8.1.6a. Give a double stitch as shown in Fig 8.1.6b



Fig. 8.1.6a



Fig. 8.1.6b



Step 7: Finish the neckline with a bias strip. Give a stay stitch at Neckline at a distance of 1/8" as shown in Fig 8.1.7. Fold the bias strip in half and iron while gently stretching it. Place the bias strip on the right side of the neckline and stitch at a distance of 1/4" as shown in Fig. 8.1.7a



Fig. 8.1.7



Fig. 8.1.7a

Fold the strip towards the wrong side and create a piping as shown in Fig 8.1.7b. Stitch in the ditch so as to secure the strip on the other side as shown in Fig 8.1.7c



Fig. 8.1.7b



Fig. 8.1.7c



8.2. Construction of Choli Blouse

Trace your pattern on the fabric according to the marker and cut all pieces as shown in Fig.8.2.1 and Fig. 8.2.2 respectively.



Fig. 8.2.1



Fig. 8.2.2

Step 1: Attach the four bust pieces in such a way that they are self-finished.

Place the right side of the bust pieces facing each other and stitch on the wrong side as shown in Fig 8.2.3



Fig. 8.2.3

Step 2: Attach the side panels with the bust cups by inserting them between the cup panels as shown in Fig. 8.2.4. And Fig 8.2.4a



Fig. 8.2.4



Fig. 8.2.4a

Step 3: Attach back to front at the side seams and join the tieups at the back.

Step 4: Attach the centre of both halves by placing the right sides facing each other and stitch at the wrong side as shown in Fig 8.2.5 and Fig.8.2.5a



Fig. 8.2.5



Fig. 8.2.5a

Step 5: Join the waist band which is Cut 2. Sandwich the choli between the two waist band strips and stitch as shown in Fig 8.2.6, Fig.8.2.6a.



Fig. 8.2.6

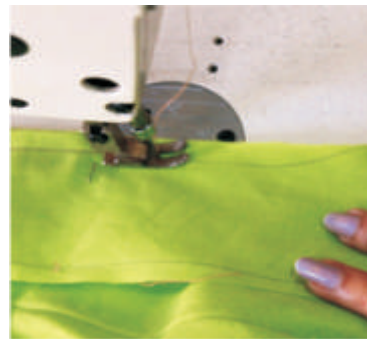


Fig. 8.2.6a

Step 6: Finish the neckline with a bias strip same as the sari blouse.



Fig. 8.2.7
(The completed front of a choli)



Fig 8.2.8
(A finished choli blouse)

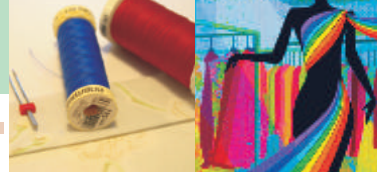


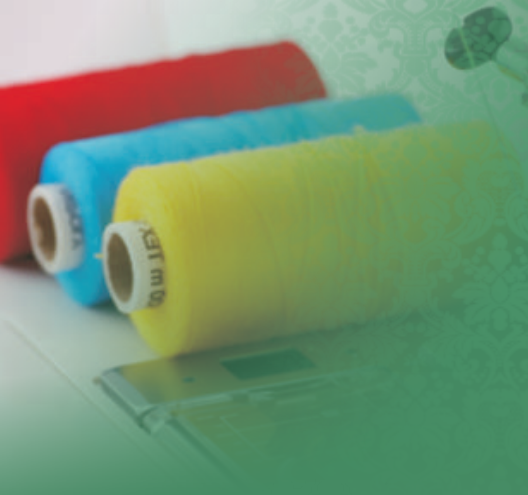
ACTIVITY

Collect visuals of various kinds of blouse from the magazines and make scrap book.

Fill in the blanks

1. Sari blouse has a _____ piece _____ which has hook and eye to fasten the blouse.
2. Choli blouse has _____ piece that is cut on _____.
3. The waistband of choli blouse is cut on _____ grain and has _____ dart.
4. The _____ and choli piece are cut _____ for reinforcement.
5. The four _____ pieces of choli are stitched in such a way that they are _____.





CENTRAL BOARD OF SECONDARY EDUCATION

Shiksha Kendra, 2, Community Centre, Preet Vihar, Delhi-110301

Tel: 011-22527183 • Fax: 011-22526580

E-mail: voc.cbse@gmail.com • Website: www.cbsevocational.in